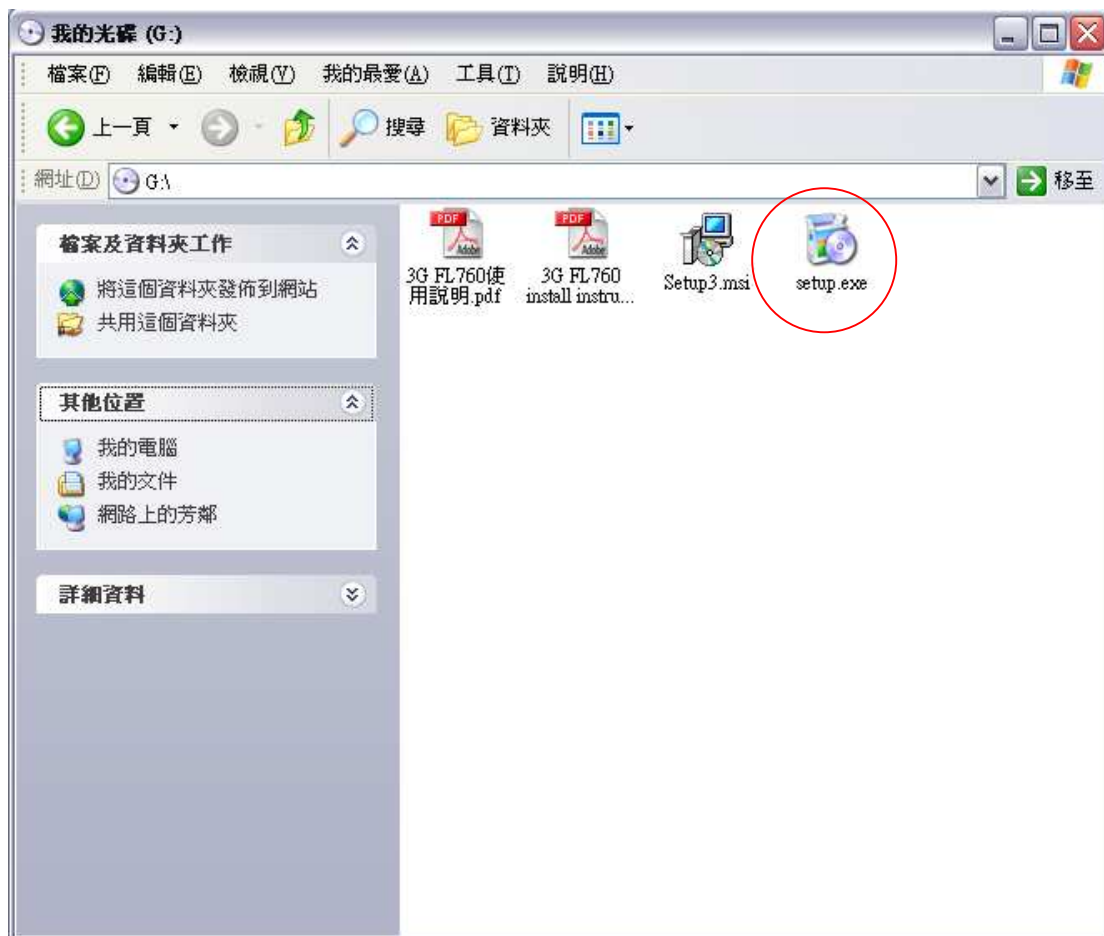


3G FL760 install instruction

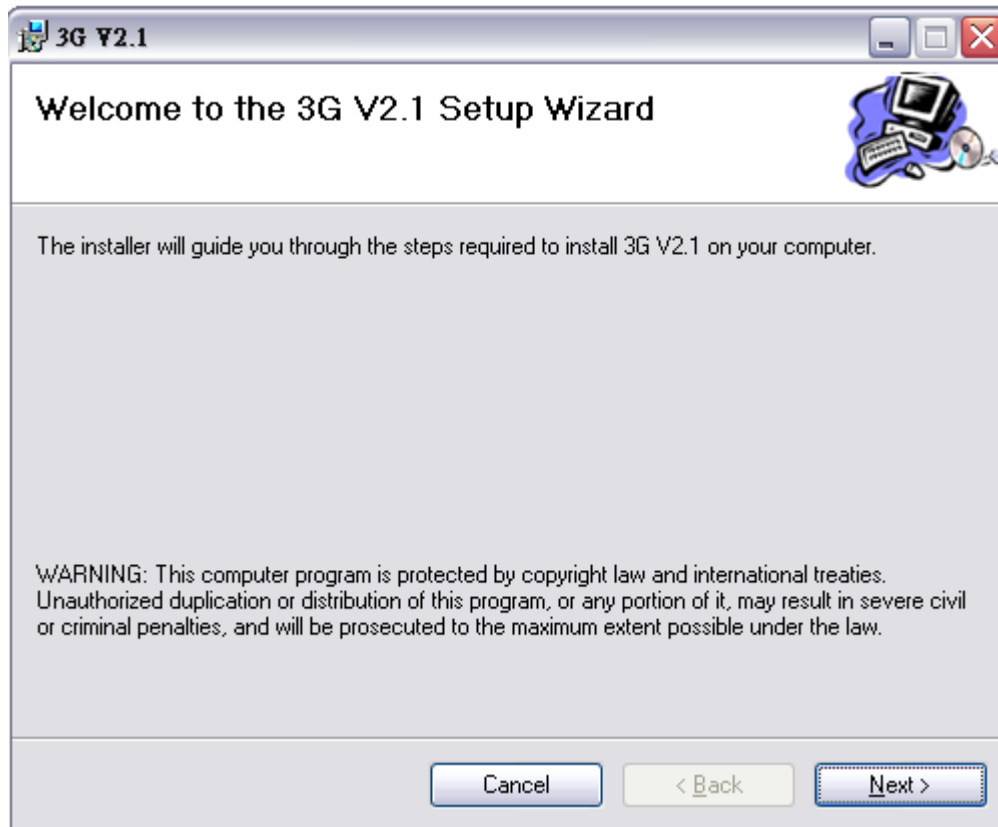
This CD-ROM included 3G V2.1 update software, restore to V2.0 software and PC configuration GUI (graphical user interface). Following you can find the instructions for software installation, update, and how to use the PC configuration GUI:

1. Software installation:

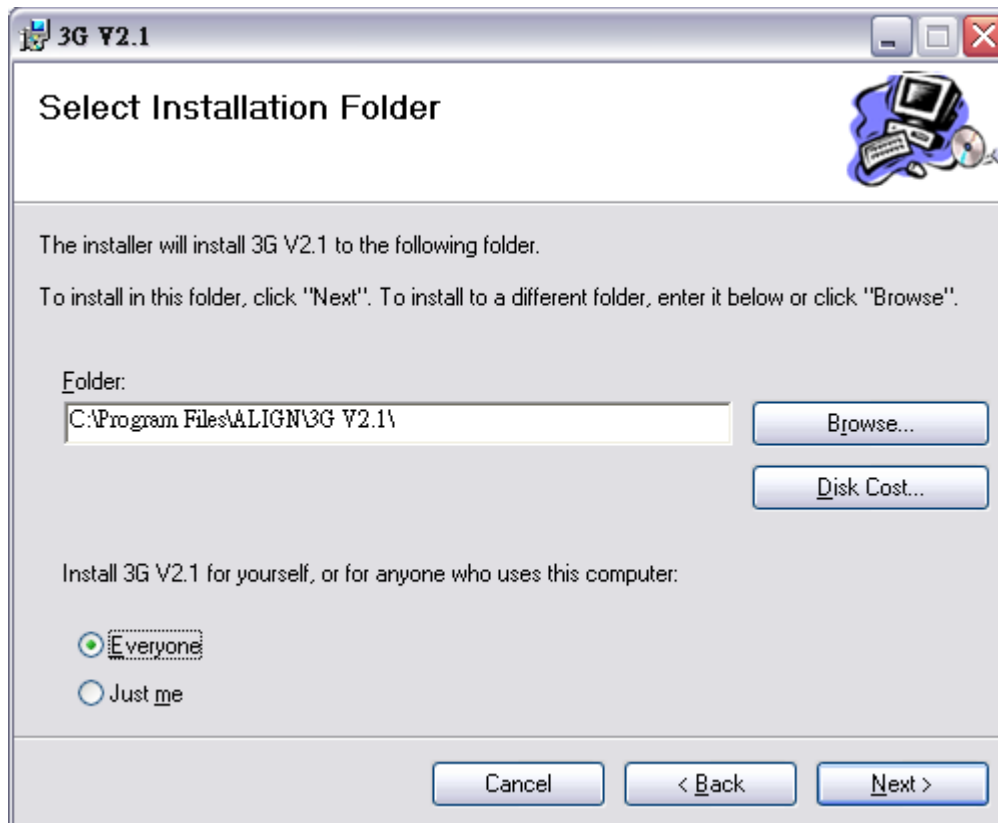
Please click “setup.exe” to start install.



A dialog box will be popped up. Click “Next” to the next step.



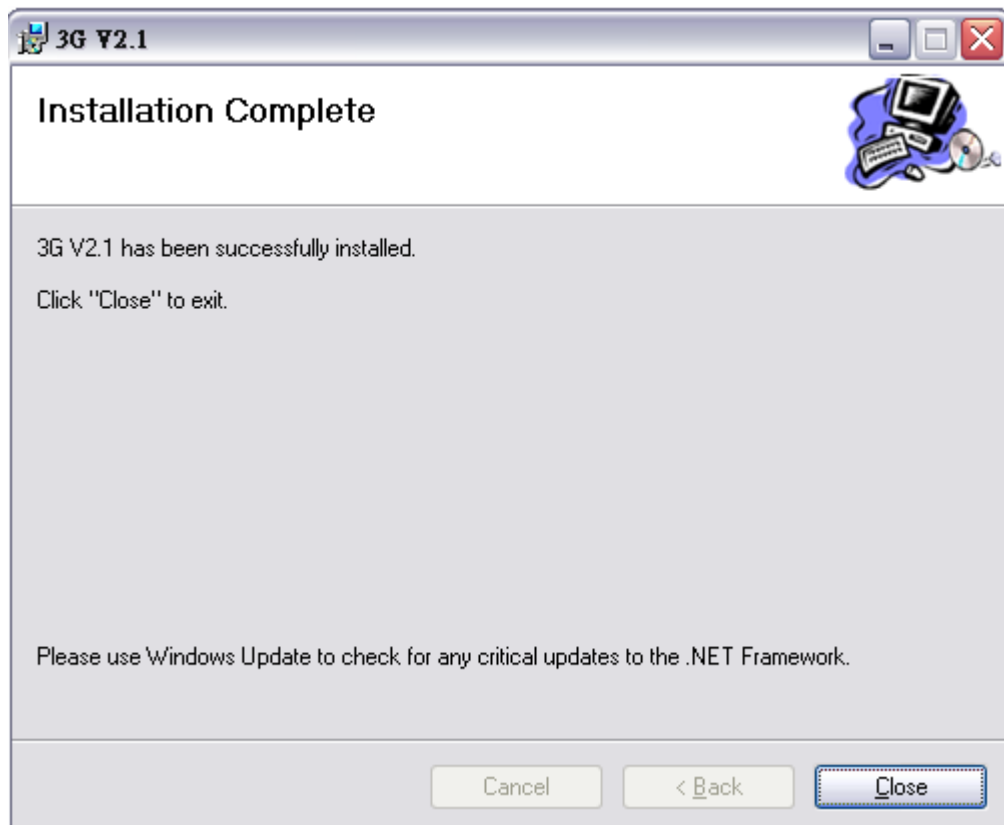
Select where you do want to install and click “Next”.



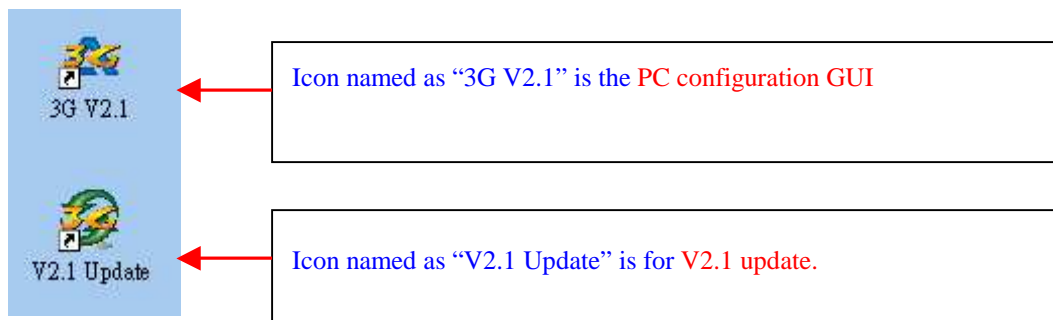
Click “Next” to start the installation.



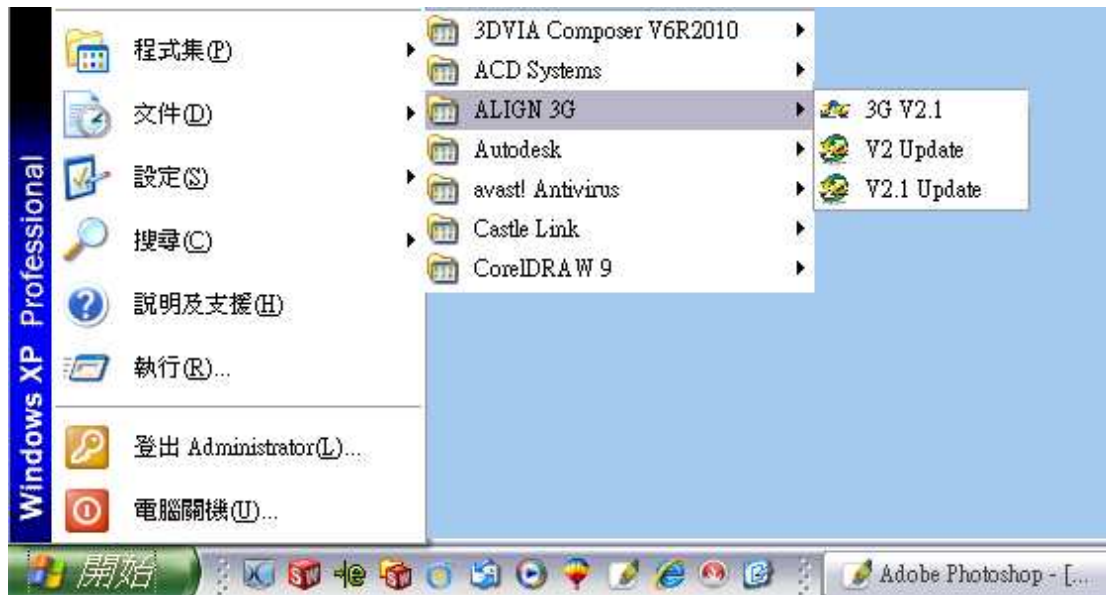
When the installation is complete, click “Close” to exit the installation.



2 icons will appear on the desktop after the installation is complete.



You will find a new folder named “ALIGN 3G” in your START/Programs menu. There are 3 files in the folder: two of them are the installations for V2 and V2.1, and 3G V2.1 is the PC configuration GUI.



2. 3G Update Instructions:

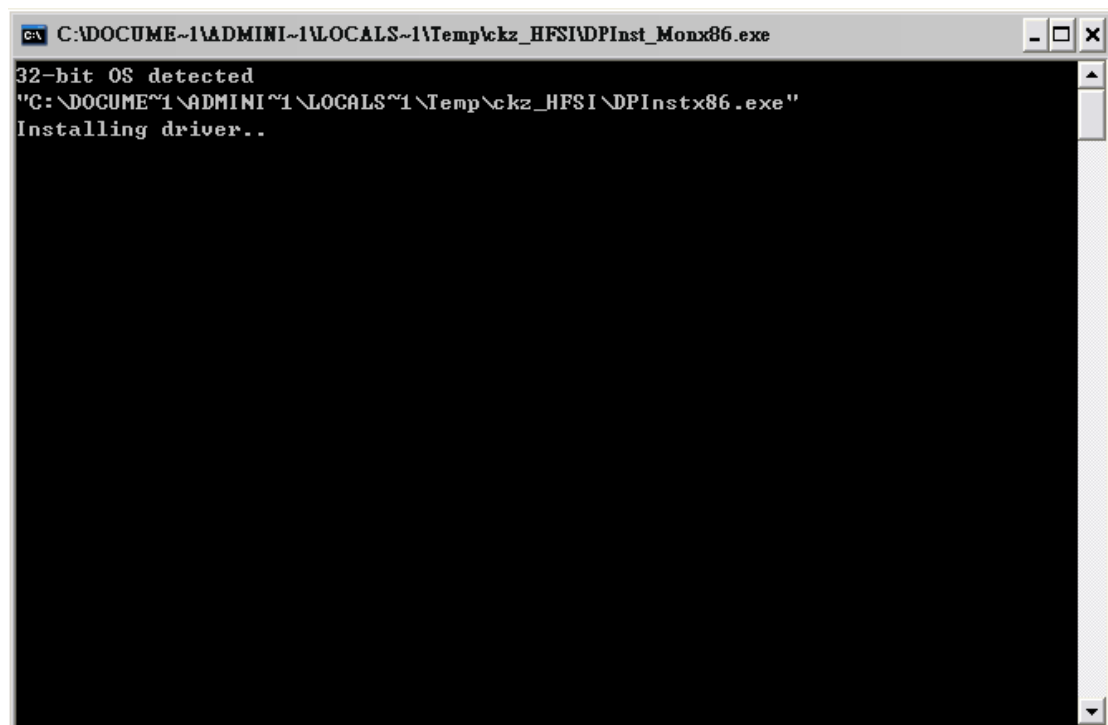
Please update the 3G software into V2.1 first to connect the PC configuration GUI with 3G FL760.

Double-click “V2.1 Update.exe” to start

Select your language.



If 3G link cable driver haven't been install yet. System will automatically install driver for you when first time executing 3G V2.1 or V2.1 update. The following DOS command window will show:



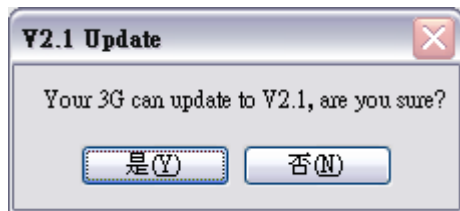
Connect 3G link USB cable as shown and click YES to the next step



Connect the Y-cable harness with 3G sensor and 3G link cable as shown.

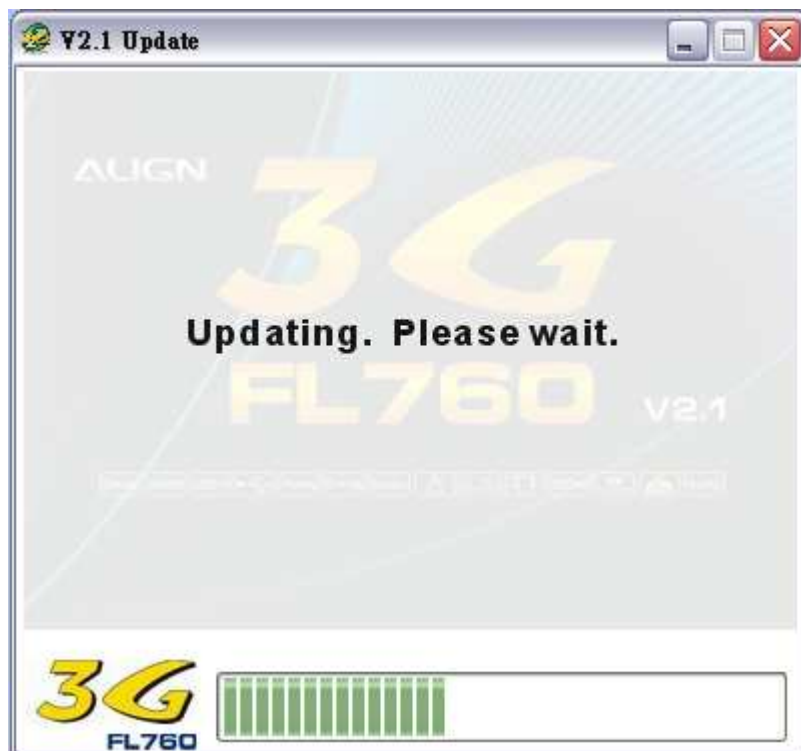


Click “Yes” to begin sensor update.



Click “No” to abort update

Updating as shown



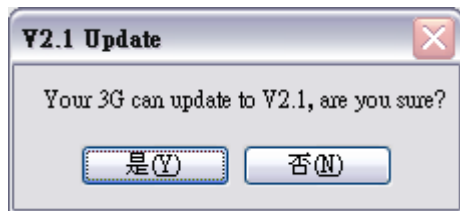
Please check again if the 3G link USB cable is connected. Click “Yes” to the next step.



Connect the Y-cable harness with 3G controller unit and 3G link cable as shown.

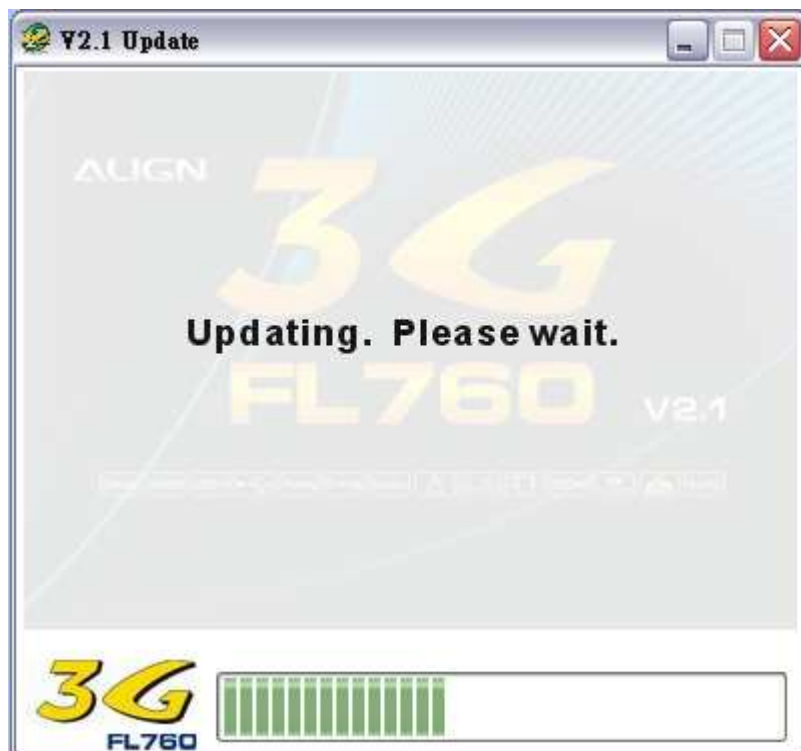


Click “Yes” to begin controller update.



Click “No” to abort update.

Updating as shown



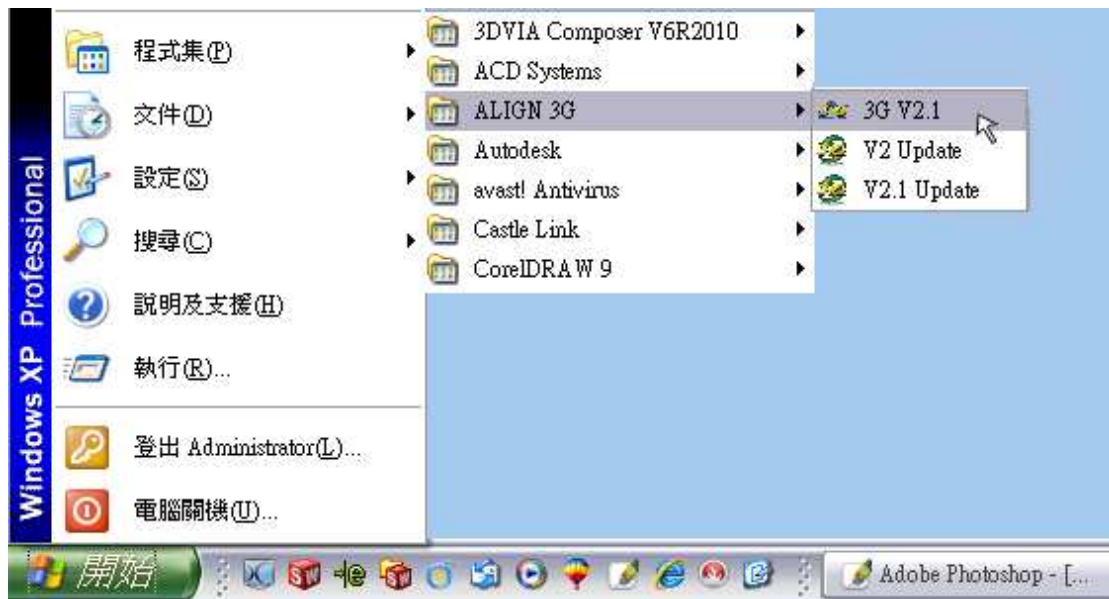
After the update is completed, reset the AIL/ELEV gain dial to 12 O'clock position.



Click "OK" to exit

3. PC Configuration GUI instruction:

Click “Start” -> “Programs” -> ALIGN 3G -> 3G V2.1



Or, you double-click the 3G FL760 USB Link shortcut on the desktop.



Title screen appears



Select your language. We use English as example here.



The software will enter the PC Configuration GUI after you selected the language. This interface makes you to adjust aileron parameter setting, elevator parameter setting, rudder parameter setting, and miscellaneous setting with the values you need. The command display and 3G setting display functions for you to check your 3G settings.



Please connect the Y-cable harness with 3G controller unit, 3G sensor and 3G Link.
After everything connected, turn on the power of transmitter and the receiver.
Caution: Please disconnect any 2 cables of the motor to avoid the motor rotates while doing the setting.

Connecting illustration



After turn on the 3G, click 3G link button to start connect PC and 3G controller unit.
Below the “3G link” button you will see the connect status. The software will load the value in 3G controller automatically.

Linking up

A screenshot of the '3G V2.1' software interface. The window title is '3G V2.1'. The interface has several tabs: 'Aileron Parameter Setting', 'Elevator Parameter Setting', 'Rudder Parameter Setting', 'Miscellaneous Setting', 'Command display', and '3G Setting display'. The main area contains five sliders for parameter adjustment:

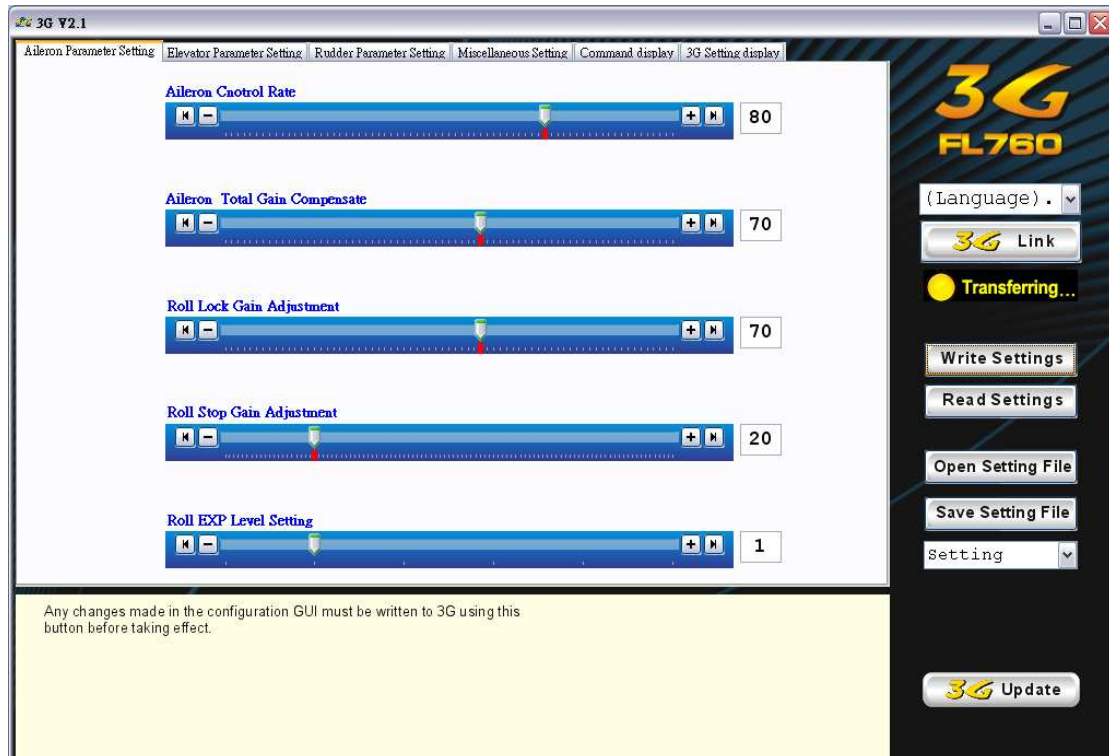
- Aileron Control Rate: 80
- Aileron Total Gain Compensate: 70
- Roll Lock Gain Adjustment: 70
- Roll Stop Gain Adjustment: 20
- Roll EXP Level Setting: 1

On the right side, there is a '3G FL760' logo, a '(Language)' dropdown menu, a '3G Link' button, a 'Link Up' button with a yellow indicator light, and buttons for 'Write Settings', 'Read Settings', 'Open Setting File', and 'Save Setting File'. At the bottom, there is a 'Setting' dropdown menu and a '3G Update' button. A note at the bottom left reads: 'Confirm the 3G control-unit, sensor, and programming cable are connected via the Y-cable harness, then turn on the power on radio TX and RX. After 3G's normal startup sequence completes, click on this '3G Link' button to establish data connection between PC and 3G system. Successful connection will be indicated by the 'Link Up' status under the '3G Link' button. The program will automatically read the current 3G setting parameters upon link up. Note: Disconnect two motor wires to prevent accidental startup of the helicopter while programming the 3G system.' A small diagram of the hardware connection is shown at the bottom right.

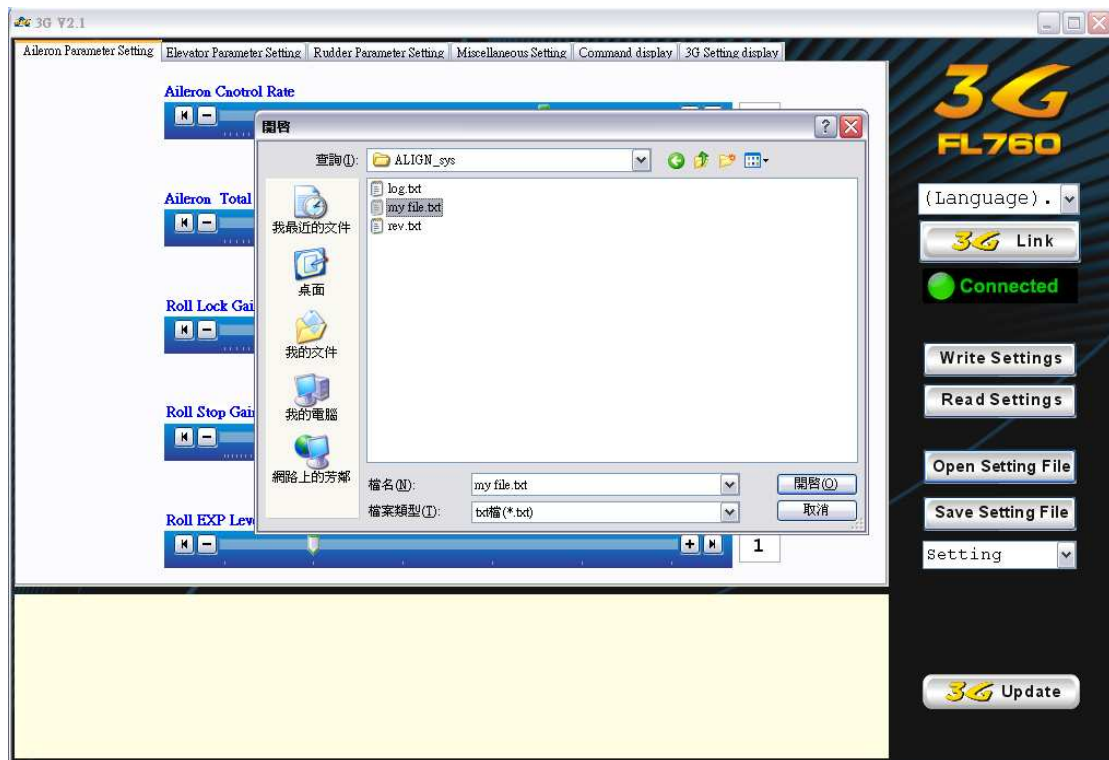
Connected



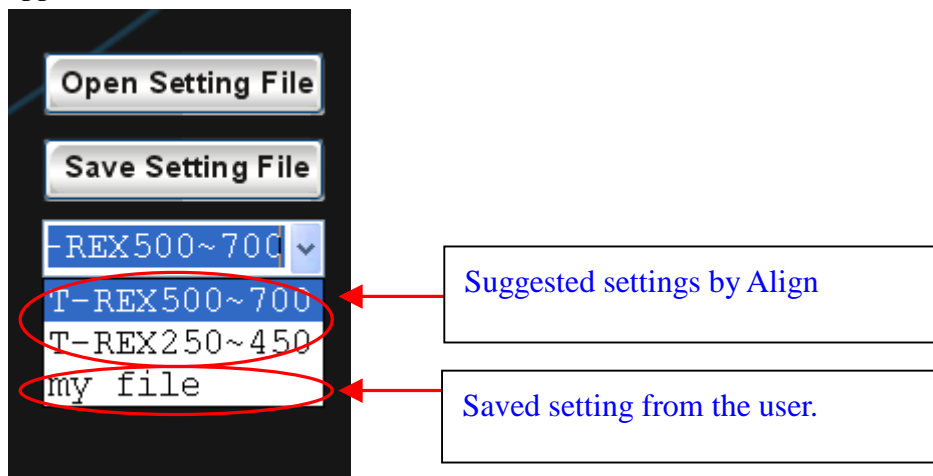
You can click “Write Settings” button to send the value to 3G. Or click “Read Settings” button to read current settings from 3G. The status will be show as linking up during writing or reading.



You can click “Open Setting File” button to open setting file from PC or click “Save Setting File” button to save current settings to PC.



You can find the common settings in the dropdown list. There are 2 build-in setting as T-REX500~T-REX700 and T-REX250~T-REX450. Any saved setting will be appear in the list as well.



You can change languages anytime. Simply select the language you need from the language dropdown list.

