



Replacement Parts

Stock #	Description	Quantity
DTXC6200	Ball End	1 x8pcs
DTXC6210	Ball End Complete (2)	1,2 x2pcs
DTXC6300	Bevel Gears	5 x1pc 3 x2pcs 4 x2pcs
DTXC6427	Body Painted	x1pc
DTXC6500 ST	Body Support	10 x1pc
DTXC6600	Rear Chassis Brace	11,12,13 x1pc 1 x2pcs
DTXC6610 ST	Front Brace	14 x1pc
DTXC6620 ST	Rear Upper Brace	15 x1pc
DTXC6700	Brake Brake	16,17 x1pc
DTXC6710	Brake Disk	18 x1pc
DTXC6720	Brake Lever	19,20 x1pc
DTXC6800 ST	Front Bulkhead	21 x1pc
DTXC6850 ST	Front Bumper	22 x1pc
DTXC7000	Chassis	23 x1pc
DTXC7150	Clutch Shoe	25 x1pc 24 x3pcs
DTXC7160	Clutch Shoe Spring	25 x1pc
DTXC7145	Clutch Bell (16T)	108x1pc
DTXC7200	Counter Gear	26 x1pc
DTXC7250	Counter Gear Shaft	27 x1pc
DTXC7300	Decal Set	x1pc
DTXC7400	Differential Gear Assembly	5,28,29 x1pc
		3,4,30 x2pcs
DTXC7450	Differential Gear Case	28,29,30 x2pcs
DTXC7500	Drive Gear	31 x1pc 86 x2pcs
DTXC7550	Drive Washer	32 x4pcs
DTXC7600	Engine Mount	33,34 x2pcs
DTXC7650	Engine (Clutch) Nut	35 x1pc
DTXC7700	Flywheel	36 x1pc
DTXC7750	Flywheel Spacer	37 x1pc
DTXC7800	Fuel Tank (85cc)	38 x1pc
DTXC7900 ST	Gear Case	39,40 x1pc
DTXC7950 ST	Gear Case Brace	41 x1pc
DTXC8001 ST	Rear Hub	42 x2pcs
DTXC8050 ST	Hub Carrier	43 x2pcs
DTXC8100	Joint	44 x2pcs
DTXC8201	King Pin	45 x4pcs
DTXC8306	Pivot Ball	98 x4pcs
DTXC8400	Radio Plate	46 x1pc
DTXC8500	Brake/Throttle Rod Set	47,48,49 x1pc
		50 x2pc 20 x3pcs
DTXC8510	Servo Saver Rod Set	90 x2pc 1,98 x4pcs
DTXC8520	Upper Rod Set	90 x2pcs 1,2 x4pcs
DTXC8600	13.5mm Screw Pin	53 x4pcs
DTXC8610	23mm Screw Pin	54 x4pcs
DTXC8620	Screw Pin Arm	55 x4pcs
DTXC8700	Screw Set Complete	x1pc
DTXC8800 ST	Throttle Servo Mount	56 x3pcs, 58 x1pc
DTXC8810 ST	Steering Servo Mount	60 x2pcs
DTXC8850	Servo Saver	51,59,61,62,63,64,65,66,67 x1pc
DTXC8900	Wheel Shaft	68 x2pcs
DTXC9000	Complete Shock	x2pcs
DTXC9100	Shock Bushing	69 x4pcs
DTXC9110	Shock Spring	70,94 x2pcs
DTXC9125	Shock Shaft	1,2,71,87 x2pcs
DTXC9150	Shock Body	72,88,89,91,93 x2pcs 92 x4pcs
DTXC9250 ST	Rear Shock Tower	74 x1pc
DTXC9300	Slipper Adjustment Spring	75,96,97 x1pc
DTXC9310	Slipper Disk	76 x2pcs
DTXC9320	Slipper Pad	77 x2pcs
DTXC9400	Spur Gear (52T)	78 x1pc

Stock #	Description	Quantity
DTXC9501 ST	Rear Suspension Stop	79 x2pcs
DTXC9551 ST	Suspension Arm	80 x2pcs
DTXC9662	68mm Swingshaft	81 x2pcs
DTXC9715	Rear Tires	82 x2pcs
DTXC9710	Front Tires	103 x 2pcs
DTXC9760	Upper Turnbuckle	90 x2pcs
DTXC9875	Rear Wheel	84 x2pcs
DTXC9870	Front Wheel	109 x2pcs
DTXG0200	Torq .12 Engine w/Pull Start	x1pc
DTXG0612	Muffler Set	100,101,102 x 1pc
DTXG0609	Muffler Gasket	101 x 2pcs
DTXG0555	Exhaust Diverter	102 x 1pc
DTXC9960 ST	Wing Mount Set	104,105,106 x 2pcs, 110 x1pc
DTXC9205 ST	Front Shock Tower	73,107 x1pc
DTXC9690	Throttle Rod Spring	111 x2pcs
DTXZ1060	Instruction Manual	x1pc

Optional Parts

DTXC1090	Bearing Completer Set
DTXC2521	Clutch Bell (13T)
DTXC2522	Clutch Bell (14T)
DTXC7140	Clutch Bell (15T)
DTXC2525	Clutch Bell (17T)
DTXC2526	Clutch Bell (18T)
DTXC2541	4-shoe Clutch Kit (.12 CZ-R)
DTXC6425	Body Unpainted
DTXC9850	White Wheel (2)
DTXG0205	Torq. 12 Engine
DTXG0582	Torq. 12 Black Heatsink Head

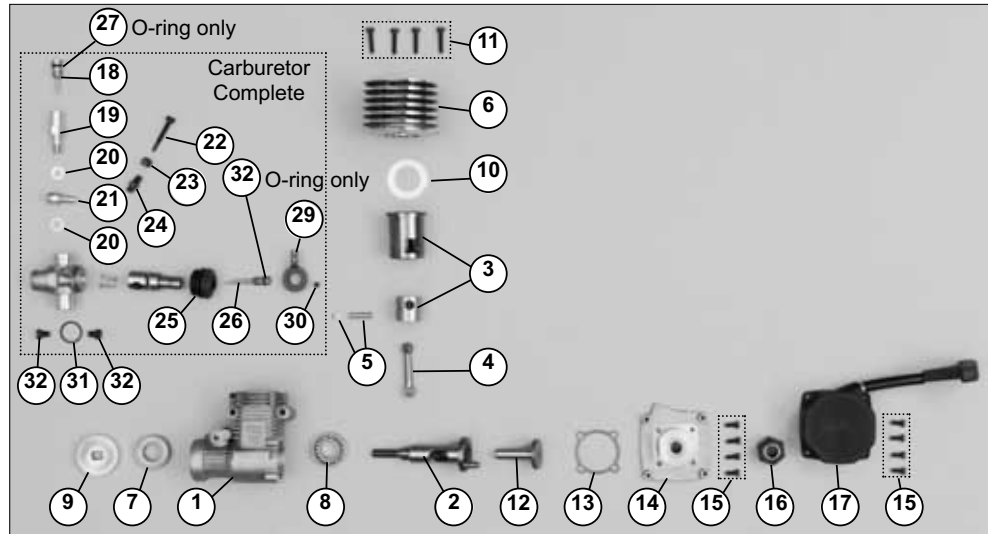
To order replacement parts or to send your model in for repairs covered under warranty, you should send your model to DuraTrax's authorized U.S. repair facility:

Hobby Services
1610 Interstate Drive
Champaign, Illinois 61822
Attn. Service Department

Phone: (217) 398-0007 9:00 A.M. - 5:00 P.M. Central Time M-F
E-Mail: hobbyservices@hobbico.com

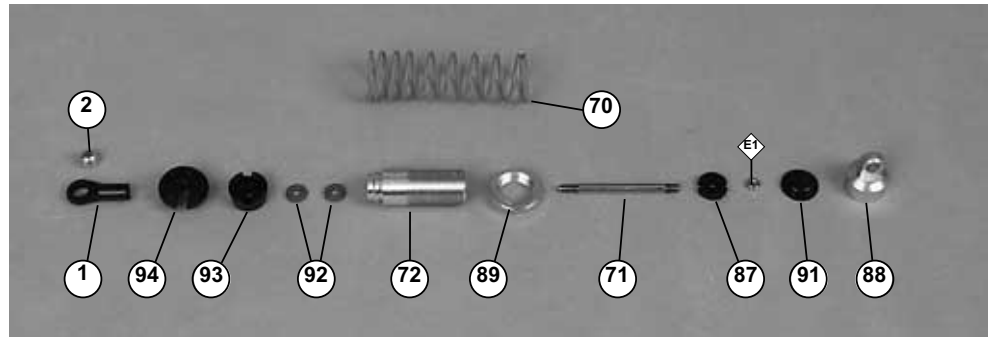
ST indicates Stress-Tech™ part

TORQ .12 EXPLODED VIEW & PARTS LIST



Replacement Parts

Stock #	Description	Stock #	Description
DTXG0350	Crankshaft Front Bearing 7	DTXG0550	Cylinder/Piston Assembly 3
DTXG0360	Crankshaft Rear Bearing 8	DTXG0560	Drive Hub 9
DTXG0400	Carburetor Dust Cover	DTXG0580	Heatsink Head 6 0
DTXG0420	Carburetor Needle O-ring Set s d	*DTXG0582	Black Heatsink Head w/gasket
DTXG0440	Carburetor Complete	DTXG0590	Heatsink Head Gasket 0
DTXG0450	Carburetor Screw jx2	DTXG0600	Heatsink Head Screw Set -x4
DTXG0470	Connecting Rod 4	DTXG0620	Needle Valve y
DTXG0492	Cover Plate q w	DTXG0640	Piston Pin 5
*DTXG0494	Cover Plate Standard w/gasket	DTXG0750	Recoil Starter r t
DTXG0500	Cover Plate Gasket q	DTXG0760	Starting Shaft =
DTXG0510	Cover Plate Screw ex4	DTXG0466	Carb O-ring h
*DTXG0512	Cover Plate Screws Standard (Not Shown)	DTXG0615	Needle Socket Set u ox1 ix2
DTXG0520	Crankcase 1	DTXG0605	Idle needle a
DTXG0530	Crankshaft 2	DTXG0800	Throttle arm f g
*DTXG0532	Crankshaft Standard (Not Shown)	DTXG0810	Throttle stop screw p []
	*optional		





- ### Hardware Legend
- 3mm Locknut
 - 4mm Locknut
 - 3x8 S/T Screw
 - 3x10 S/T Screw
 - 3x12 S/T Screw
 - 5x10 Bearing
 - 8x14 Bearing
 - M3x6 Screw
 - M3x12 Screw
 - M3x15 Screw

- M3x18 Cap Screw
- M3x20 Screw
- M3x25 Screw
- M3x30 Screw
- M3x10 Fillister
- M4x12 Fillister
- M3x3 Set Screw
- M4x4 Set Screw
- 4mm Washer
- 4mm E-clip
- 5mm E-clip
- 11mm E-clip
- 5x10 Bushing
- M3x30 Cap Screw
- 3mm Thin Washer
- 2mm Nut

