

# Futaba

**FP-S126G** for J Series

**FP-S16G** for FN, G, L Series

## **- SMALL, RUGGED, LANDING GEAR SERVOS**

These small, rugged landing gear servos are designed for use with Futaba radio control sets. The FP-S126G is for the Futaba J Series and the FP-S26G is for the FN, G, and L Series.

### [FEATURES]

- \* Clockwise and counterclockwise rotation is controlled by the magnitude of the pulse width by ON-OFF of the transmitter snap switch and is stopped at the end of the stroke.
- \* Since motor drive current does not flow when stopped even when a small load is applied, current drain is low.
- \* Thick film metal plated connector pins eliminate faulty contact and increase reliability against vibration and shock.
- \* Polybutylene terephthalate fiberglass case is rugged and invulnerable to fuel.

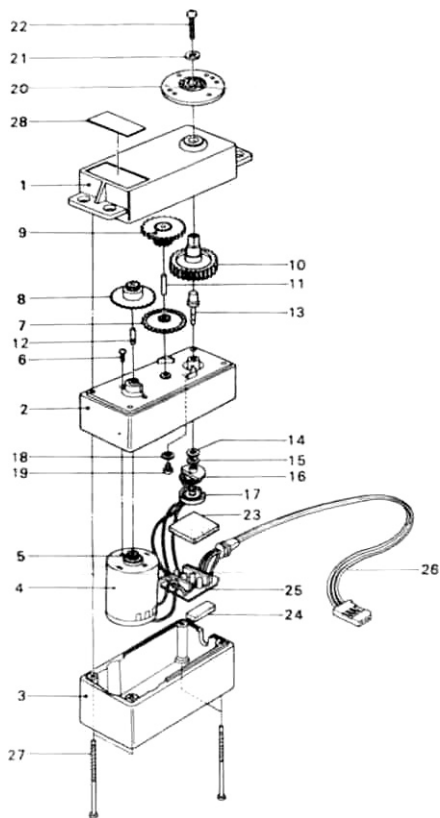
### [RATINGS]

Control system : +pulse width control  
Operating angle : 160° or greater  
Power requirement : 4.8V or 6.0V(shared with receiver)  
Current drain : 6.0V, 8mA(at idle)  
Output torque : 58.4oz/in(4.2Kg-cm)  
Operating speed : 0.30sec/60°  
Dimensions : 1.56X0.75X1.56inch(40.5X20X40-5m/m)  
Weight : 1.7oz(46g)

### [USAGE PRECAUTIONS]

- \* Use the FP-S126G with a J series digital proportional set.
- \* Use the FP-S26G with an FN, G, or L Series digital proportional set.  
Futaba servos can not be used with other makes of RC sets.
- \* Match the landing gear stroke with the stroke of the landing gear servo.  
Link the servo to the landing gear so that pulling and pushing are neither excessive nor insufficient.
- \* When mounting the servo with screws, always use bushings. Tighten the screws until the bushing is slightly crushed. The shock absorbing effect will be lost if the screws are too tight.
- \* A spare horn is supplied. Use is as needed.

(Specifications are subject to change without prior notice.)



No.	Part Name	Part No.
1	Upper case	S05600
2	Middle case	S05620
3	Bottom case	S05460
4	Motor	S91212
5	Motor pinion	S02461
6	Phillips pan head screw 2X3	J50002?
7	1st gear	S02490
8	2nd gear	S02491
9	3rd gear	S02715
10	Final gear	S02716
11	Intermediate shaft	S02495
12	2nd shaft	S02494
13	Output shaft	S02803
14	Washer	S11043
15	Push nut 1.50	J60070
16	Metal slider	i 40002
17	TR13 VR145D	i 39999
18	Fiber washer	S90332
19	Iron truss screw 2x4	J52012
20	Servo horn G	S01220
21	2o toothed washer	J20100
22	Binding head tapping screw 2X8	J55023
23	Neoseal sponge 5x15X15	S90336
24	Neoseal sponge 3X15X7	S90333
25	Printed wiring board	AS1200
26	S126-----3PB-WRB300	FPC-8M
	S26 .....with 3PC cord	FPC-5M
27	Iron pan head screw 2X35	J50400
28	Nameplate	S80669



## FUTABA CORPORATION OF AMERICA

555 West Victoria Street Compton, California 90220 U.S.A.

Phone : (213) 537-9610 Telex : 23-0691227 Facsimile : 213-637-8529

## FUTABA CORPORATION

Tokyo Office: DAIDO BLDG., 3-1-16. Sotokanda, Chiyoda-ku.

Tokyo, Japan.

Phone : (03) 255-5881

Telex : J26532