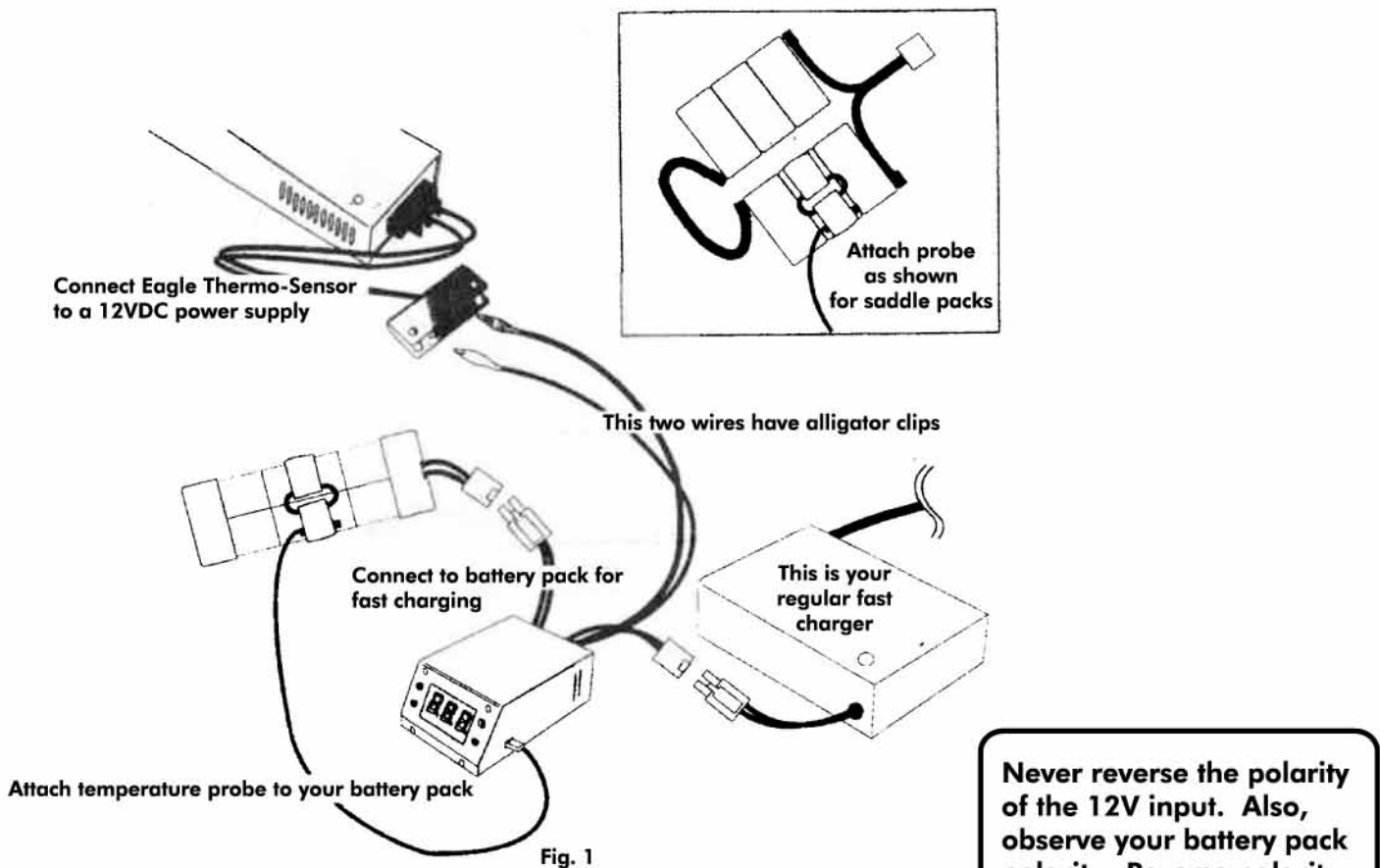


- STEP 1 Conect everything as shown in fig#1
- STEP 2 The Thermo-sensor display should be showing your battery temperature in Celsius
- STEP 3 Before you begin, please note that regular room temperature should be around 15C to 33C
- STEP 4 Press the SET button and now the display should be flashing
- STEP 5 While the display is flashing, you can control the cut-off temperature by using the UP / DOWN buttons
- STEP 6 In general, start with 42C to 44C cut-off point
- STEP 7 Double check to make sure that the temperature probe is attached properly
- STEP 8 Make sure that your fast charger charge setup match the type of battery you are charging
- STEP 9 Now start your fast charge

- Please note that almost all linear fast charger should work with the Eagle Thermo-Sensor
- Certain pulse type charger will not work properly with this Thermo-Sensor
- If the cutoff temperature is set too high, your battery may be damaged
- If your charger stop before the desire temperature is reach, simply start your fast charger again



**To convert Fahrenheit temperatures into Celsius:**

Begin by subtracting 32 from the Fahrenheit number.

Divide the answer by 9.

Then multiply that answer by 5.

Here's an example: Change 95 degrees Fahrenheit to Celsius: 95 minus 32 is 63. Then, 63 divided by 9 is 7. Finally, 7 times 5 is 35 degrees Celsius.

**To convert Celsius temperatures into Fahrenheit:**

Begin by multiplying the Celsius temperature by 9.

Divide the answer by 5.

Now add 32.