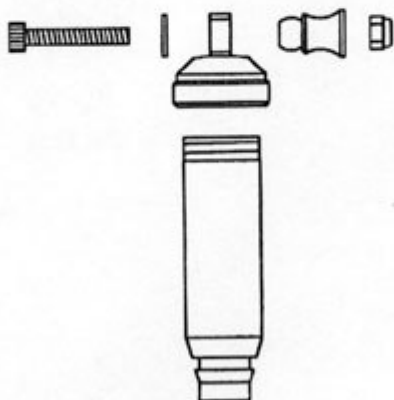




#355

MIP 1/8th Hard Body Shock Kit:

Assemble *MIP Hard Bodies* same as the stock shock bodies that were included in your car kit. Use all the standard shock spacers, o-rings (or MIP Blue Seals), and clips. To mount the Hard Body shocks onto the shock tower use supplied footballs and hardware.



Moore's Ideal Products • www.miponline.com
830 W. Golden Grove Way • Covina, CA. 91722 • 626-339-9008

[RETURN TO LIST OF INSTRUCTION SHEETS](#)