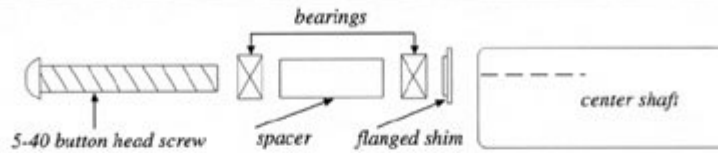


MIP*Race With US***#9020 MIP Tweak Station™**

#363

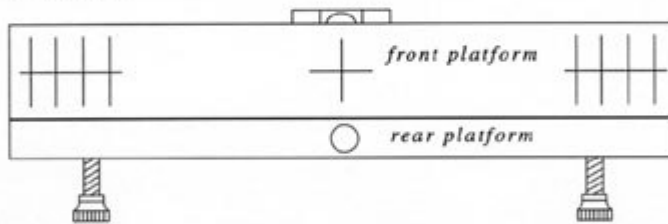
The *Tweak Station™* is precision machined from high grade aluminum with a stainless steel center shaft. Completely adjustable feet allow the *Tweak Station™* to be leveled on any flat surface. The super sensitive ball bearing front leveling platform swivels with such ease and accuracy that the slightest tweak in your chassis suspension set up will be detected.

1

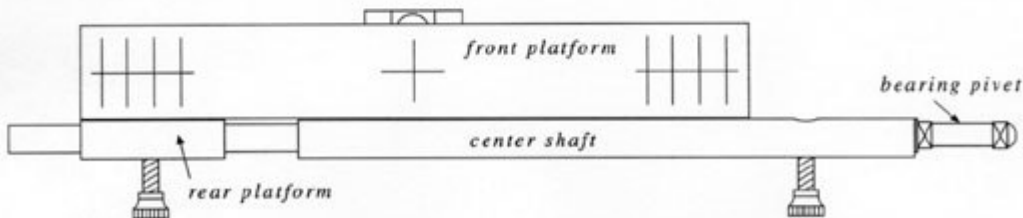
Follow above diagram to assemble the front bearing pivot on the stainless steel center *Tweak Station™* shaft. The hole in the center shaft is off center. The bearing pivot needs to be closer to the top when threading the plastic foot into the center shaft.

2

Screw the rear portion of the center shaft into the front half which already has the bearing pivot assembly installed. Thread the plastic adjustable feet into rear platform and center shaft. Push and twist the rear of the center shaft through the center hole in the rear platform which has a plastic friction insert to create a tight fit. This length is adjustable depending on the wheelbase of your vehicle.

3

On any flat surface stand the front platform upright on the rear platform as shown above. Adjust the feet so that the rear platform is level by watching the vial.

4

Level the *Tweak Station™* from front to rear by standing the front platform across the rear platform and center shaft as seen in above diagram. Adjust the foot in center shaft until the *Tweak Station™* is completely level.

5

Slide front platform onto bearing pivot and balance by using supplied lead under the left or right side. Apply the *Tweak Station™* vinyl decal on center shaft.

Moore's Ideal Products • 830 W. Golden Grove Way • Covina, CA 91722 • USA • 626-339-9008

[RETURN TO LIST OF INSTRUCTION SHEETS](#)