



G4 EVO

INSTRUCTION MANUAL

1/10 SCALE 200MM 4WD GAS ON ROAD

TECHNICAL INFORMATION

Length: 365mm

Width: 200mm

Wheelbase: 259mm

Gear Ratio: 1st 6.32:1 / 2nd 4.95:1

Weight: Approx. 1725g

The
of **POWER**
Team Magic
www.teammagic.com.tw



SAFETY PRECAUTIONS

- ❖ This radio control model car is not a toy!
- ❖ First time builders should seek the advice of experienced modelers before starting assembly.
- ❖ Assemble this kit only in places out of children's reach!
- ❖ Take enough safety precautions prior to operating this model. You are responsible for this model's assembly and safe operation!



BEFORE STARTING ASSEMBLY, PLEASE READ THIS INSTRUCTION MANUAL THOROUGHLY.



www.teammagic.com.tw



Thank you for purchasing this Team Magic car. This manual contains steps and instructions you will use to set up your car. Please read the entire manual before starting to assemble your car. Follow the directions in this manual closely to reduce any problems. We hope that you will enjoy your new Team Magic car.

TOOLS SUPPLIED

- ① #116042 Allen Wrenches (1.5mm, 2.0mm, 2.5mm & 5mm)
- ② #116043 Cross Wrench (4mm, 5mm, 5.5mm & 7mm)

YOU WILL NEED THESE TOOLS TO ASSEMBLE YOUR KIT.

- ① #116010 Philips Screw Driver (4mm)
- ② #116026 Philips Screw Driver (5.8mm)
- ③ #116009 Slotted Screw Driver (4mm)
- ④ Needlenose Pliers
- ⑤ Thread Locking Adhesive
- ⑥ Super Glue
- ⑦ Hobby Knife
- ⑧ Precision Ruler
- ⑨ Calipers

READ THIS BEFORE BUILDING

This manual is for the G4 kit & will help you assemble and set up the car. Read the manual to the end before assembling your kit and before contacting us for help.

OPEN THE BAGS IN ORDER

The assembly is arranged so that you will open and finish that bag before you go on to the next bag. Sometimes you will have parts remaining at the end of a bag. These will become part of the following bags. Some bags may have a large amount of small parts. To make it easier to find the parts, we recommend using a partitioned box for allocating the parts so they can be easily found.

SUPPLEMENTAL SHEETS

We are constantly updating parts to improve our kits. These changes, if any, will be noted in supplementary sheets located inside the kit box. When a supplement sheet is found, attach it to the appropriate section of the manual.

MANUAL FORMAT

The following explains the format of these instructions. The beginning of each section indicated:

- ① Which bag to open (BAG A).
- ② Which parts you will use for those steps. Remove only the parts shown. "1:1" indicates an actual size drawing. Place your part on top of the drawing and compare it so it does not get confused with a similar part.
- ③ The instructions in each step are ordered in the order you complete them, so read the words & follow the pictures. The numbers in circles are also in the drawing to help you locate them faster.

The manual that comes with your Team Magic G4 is complete. However, as development is a continuous process, up-to-date information about the G4 is provided on our web site: www.teammagic.com.tw

Here you will find the very latest information about your G4: reports by team racers and other experts with the latest tips and tricks, FAQ, forums, set-ups & download files. So make sure to visit Team Magic web site frequently.

CONTACT US

Team Magic Model Industrial Co. Ltd.
No. 185-2, 38th Road, Taichung Industrial Park, Taichung, Taiwan 407
Tel: 886-4-23552606
Fax: 886-4-23552946
E-Mail: service@teammagic.com.tw
Web Site: www.teammagic.com.tw

BAG A



502101, qty 2
2 Speed Shoe
Cam Post



502105, qty 1
2nd 47T Spur
Gear



502103, qty 2
2 Speed Shoe
Spring



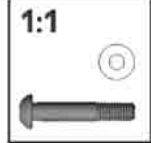
502110, qty 1
2 Speed Housing



150610, qty 2
6x10x3mm Bearing



502108, qty 1
1st 51T Spur Gear



502103, qty 2
2 Speed Shoe
Screw



502111, qty 1
One Way Hub



502110, qty 1
2 Speed Housing
Nut



502102, qty 2
2 Speed Shoe



502111, qty 1
One Way Hub
Nut (w/notch)

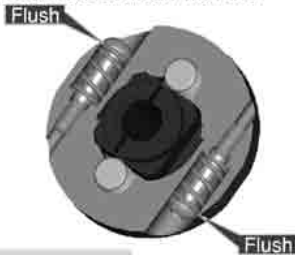


502101, qty 1
2 Speed Shoe Cam

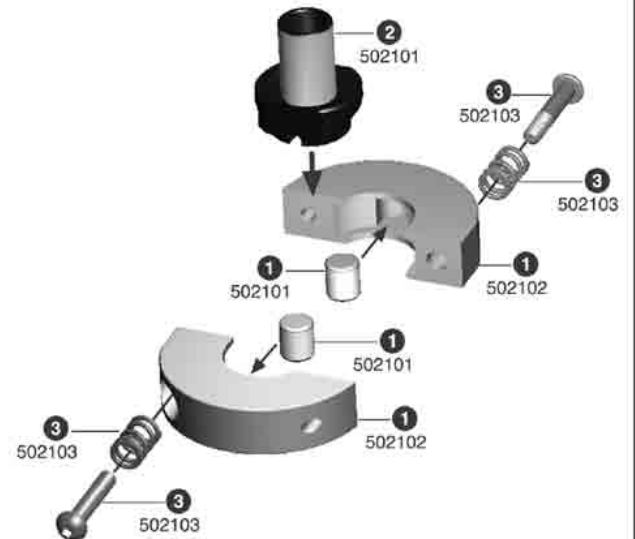
STEP 1

Two Speed Shoe Assembly

- 1 Insert #502101 2 speed shoe cam posts into #502102 two speed shoes.
- 2 Take the two shoes and sandwich the #502101 2 speed shoe cam.
- 3 Slide #502103 springs onto screws. Insert the screw and spring into the 2 speed shoes and tighten the screws. The screws should be flush with the edge as shown.



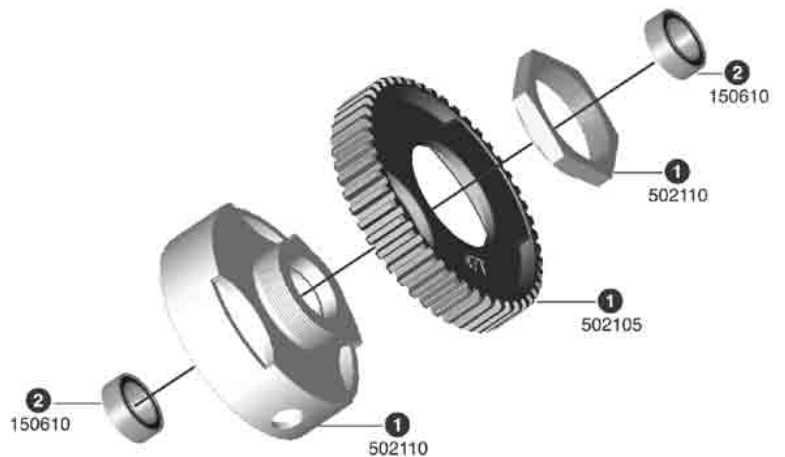
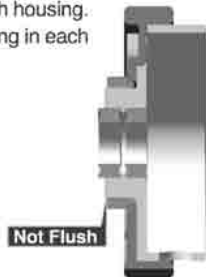
A good starting point is to have the screw flush with the edge.
Screw in both adjusting screws if you want it to shift later.
Screw out both adjusting screws to shift earlier. **PLEASE REFER TO FINAL ADJUSTMENTS - TWO SPEED.**



STEP 2

Two Speed Housing Assembly

- 1 Attach #502105 47T spur gear to #502110 clutch housing with #502110 clutch housing nut. Make sure the spur gear is aligned with the clutch housing.
- 2 Insert one #150610 6x10x3mm ball bearing in each side.

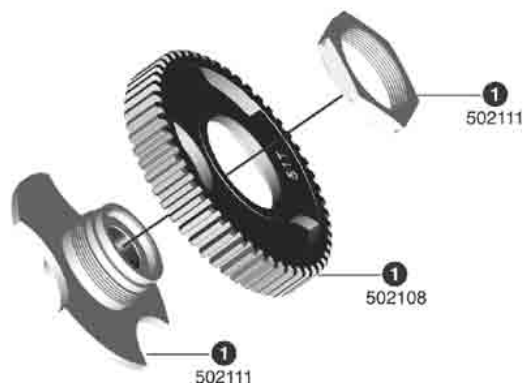


It is correct the outside bearing isn't flush with the edge of the 2 speed housing as shown.

STEP 3

One Way Hub Assembly

- 1 Attach #502108 51T spur gear to #502111 one way hub with #502111 one way hub nut. This nut is the one with notch on its side. The thread is counter clockwise. Make sure the spur gear is aligned with the gear.



Optional Parts

- | | |
|---------------------------------------|---------------------------------------|
| 502104 ▶ G4 2 Speed 2nd Spur Gear 46T | 502107 ▶ G4 2 Speed 1st Spur Gear 50T |
| 502105 ▶ G4 2 Speed 2nd Spur Gear 47T | 502108 ▶ G4 2 Speed 1st Spur Gear 51T |
| 502106 ▶ G4 2 Speed 2nd Spur Gear 48T | 502109 ▶ G4 2 Speed 1st Spur Gear 52T |



BAG B



502122, qty 4
3x10mm Cross RH
TP screw (B1)



502116, qty 2
Diff. Joint (B2)



502117, qty 4
4x10mm Shim (B3)



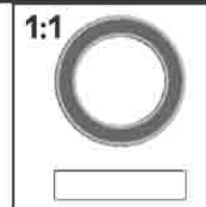
502116, qty 2
5x12mm Shim (B5)



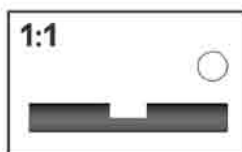
502116, qty 2
P5 O-ring (B4)



502116, qty 2
2x11mm Pin (B6)



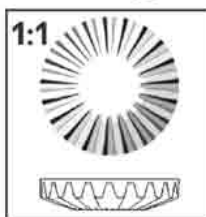
151218, qty 4
12x18x4 Bearing (B3)



502117, qty 2
4x27mm Diff Bevel Gear Shaft (B8)



502117, qty 4
Small Diff Bevel Gear (B9)



502117, qty 2
Large Diff Bevel Gear (B7)



502120, qty 1
32T Nylon Front
Pulley Gear (B1)



502120, qty 1
32T Nylon Front
Pulley Lid (B1)



502118, qty 1
Diff Case Gasket (B1A)



502122, qty 1
Nylon Rear Pulley (B1)



502115, qty 1
Diff Case (B1)



502124, qty 1
#30000 Silicone Oil (B1B)



502125, qty 1
#600 Silicone Oil
(White Body) (B1B)



K1409, qty 1
Front One-Way (B1C)