

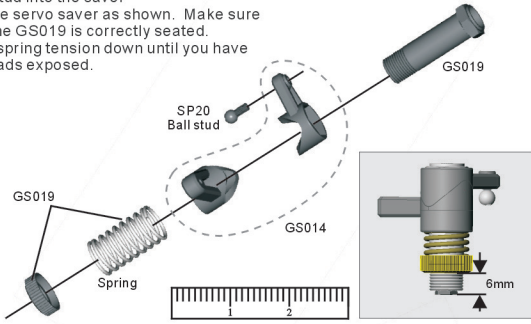
GSS01 Four-Wheel Steering Kit Assembly Instructions

The optional Four-Wheel steering kit was designed to give the Genesis 46 an extremely tight turning radius. This added steering capability may cause the truck to roll over at high speeds.

1. Remove the rear bottom plate (GS059) from the truck.
2. Follow the steps described below.

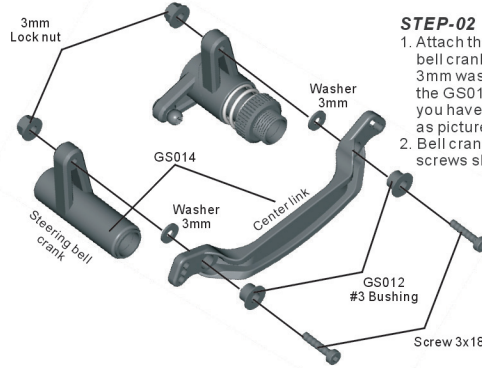
STEP-01 Servo Saver

1. Screw ball stud into the saver
2. Assemble the servo saver as shown. Make sure the hex on the GS019 is correctly seated.
3. Tighten the spring tension down until you have 6mm of threads exposed.



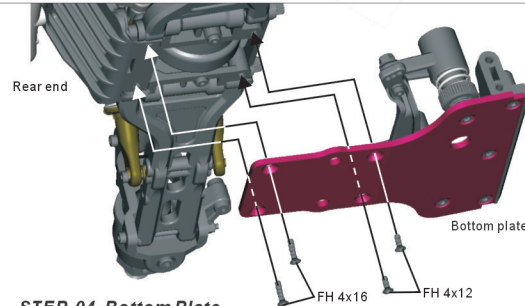
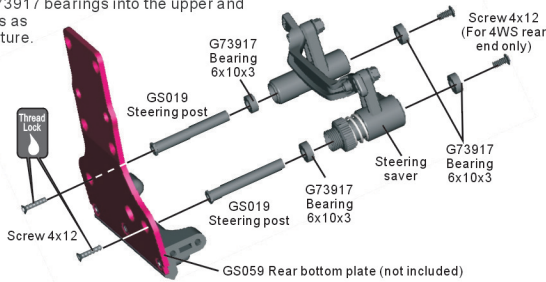
STEP-02 Steering Ball Crank

1. Attach the center link to each steering bell crank using 3x18 cap screws, two 3mm washers, two 3mm lock nuts and the GS012 #3 bushings. Double check you have the parts in the correct order as pictured.
2. Bell cranks should pivot freely. Loosen screws slightly if needed.



STEP-03 Servo Saver

1. Attach two GS019 steering posts onto the rear bottom plate using two 4x12 flat head screws. **Notice:** Thread lock is recommended for these screws.
2. Next put four G73917 bearings into the upper and lower bell cranks as shown in the picture.



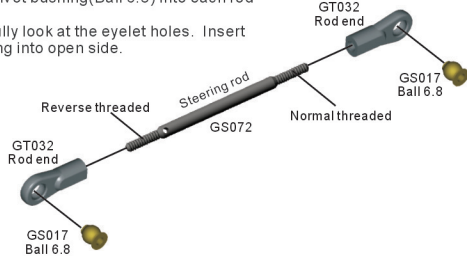
STEP-04 Bottom Plate

1. With the steering assembly mounted correctly onto the bottom plate, secure the entire end assembly onto the bottom plate using two 4x16 flat head screws and two 4x12 flat head screws.

- Remove the rear wheel hubs (GS010) and swap the left with the right. The spindle arm needs to face the front of the truck. Take a look at the next diagram for correct hub position.

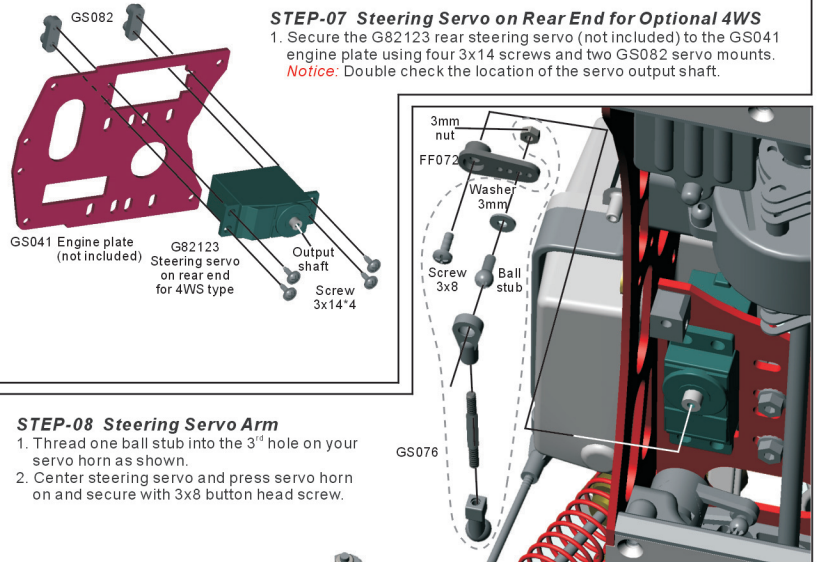
STEP-05 Steering Rod Assembly x2

1. Thread two Ct032 into two GS072 steering rods.
 2. Press in one pivot bushing (Ball 6.8) into each rod end.
- Notice:** Carefully look at the eyelet holes. Insert bushing into open side.



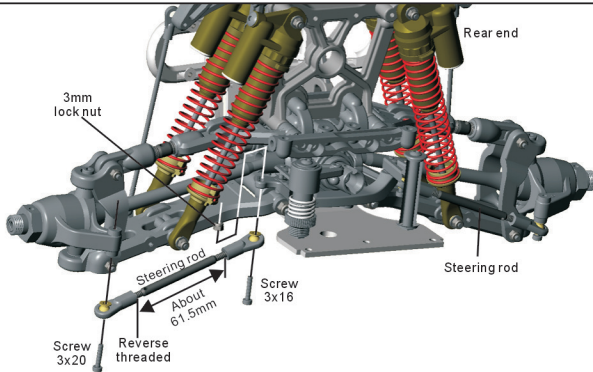
STEP-07 Steering Servo on Rear End for Optional 4WS

1. Secure the G82123 rear steering servo (not included) to the GS041 engine plate using four 3x14 screws and two GS082 servo mounts.
- Notice:** Double check the location of the servo output shaft.



STEP-08 Steering Servo Arm

1. Thread one ball stub into the 3" hole on your servo horn as shown.
2. Center steering servo and press servo horn on and secure with 3x8 button head screw.



STEP-06 Steering Rods

1. First mount the steering rods to the bell cranks using two 3x16 caps screws and 3mm lock nuts. The steering rod should be mounted to the bottom side of the bell cranks.
2. Next mount the outer side of the steering rod to the spindles using two 3x20 cap head screws.

G82123 Reverse Servo

G82122 Standard Servo -10kg (not included)

G82120 3CH Receiver (not included)

