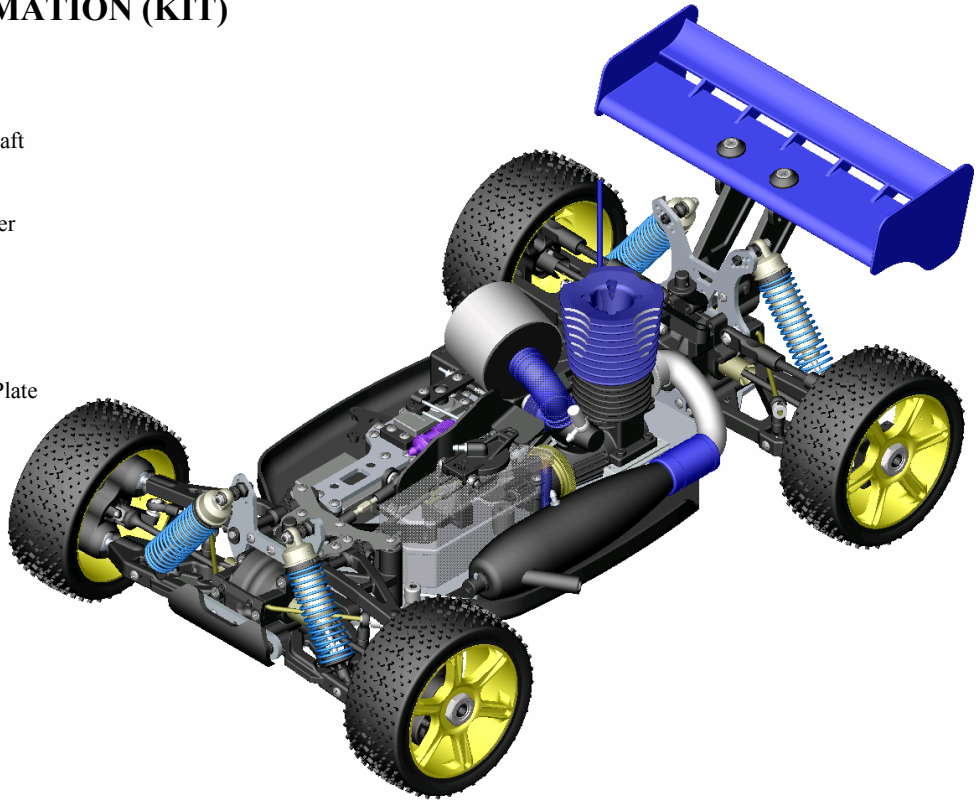


## TECHNICAL INFORMATION (KIT)

- 3 Diff. Shaft Drive 4WD
- Universal Joints (Front/Rear)
- Anodized Shock Body w/ 3.5mm shaft
- A7075 (T6) 3.2mm Main Chassis
- A7075 (T6) 3.2mm F/R Shock Tower
- Receiver & Battery Box
- 3pcs. Nylon Clutch Shoe
- Anodized (T6) Radio Plate
- Anodized (T6) Center Diff. Mount Plate
- Anodized (T6) Steering Plate
- 2pcs. Center Diff. Mount
- CNC Diff. Gears
- Clear Body
- Length :478~485mm
- Width :308
- Height :181mm
- Wheel Base :322~330mm
- Gear Ratio :11:1
- Weight :About 3400g



**Please read all instructions thoroughly before assembling the kit.**

The contents are subject to change without prior notice due to product improvement and specification change.

# *Caster*

## Performance Features of the ZX-1 Kit

- ◆ Extreme Low Diff. CG.
- ◆ Extreme Light Diff. system.
- ◆ Increased suspension travel to 7cm
- ◆ Pro Steering Geometry Angle
- ◆ Anodized F / R Aluminum Arm Holder
- ◆ Lower CG Design through out the car
- ◆ Two piece Pro Center Diff. mount
- ◆ 3.2mm Anodized Main Chassis
- ◆ Lay Down Steering Servo
- ◆ Anodized Aluminum Radio Plate
- ◆ Optional Shock Springs included.
- ◆ Full Ball Bearing through out the car
- ◆ CNC Spur, Crown and Pinion Gears
- ◆ Low Profile Radio Box
- ◆ Pro Turnbuckles
- ◆ 3 Shoe Clutch
- ◆ F / R Universal Joints
- ◆ Pro Brake Pad
- ◆ Shock Shaft 3.5mm

Thank you and congratulations on your purchase of the Caster Racing ZX-1 1/8th radio controlled model. Please read through this instruction manual carefully before you attempt to assemble or operate your ZX-1 buggy kit. This manual contains building steps and instructions you will use to set up your RTR, KIT and Pro ZX-1 buggies. Follow the directions in this manual closely and take the time to study, reference and understand your ZX-1 manual is the key to ensure the maximum performance and longevity from your new ZX-1. We hope that you will enjoy your new Caster Racing Buggy. If you ever have any questions or need help with your ZX-1 please feel free to contact our official Caster Racing dealers and distributors, as they will always be happy to help you.

Good Luck and Enjoy the Racing Fun.



## **CAUTION !!!**

***Thank you for purchasing a Caster Racing Product.***

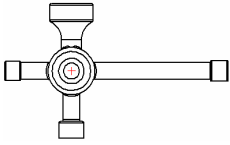
**Please read all instructions and familiarize yourself with the products and control before operation.**

1. This product is not a toy. It is a high performance model product. It is important to familiarize yourself with the model, its manual, and its construction before assembly and operation, Adult supervision is necessary.
2. Always keep this instruction manual handy for your assembling and operation reference, even after completing the assembly.
3. Make sure all the screws are properly tightened and all the parts are checked after running the car for a long period of time.
4. For the best performance, it is important to make sure all the moveable parts work free without binding.
5. Do not operated model products in rain, on public roads, near crowds, near airport, or near areas with restricted radio operation.
6. Always keep fuel away from heat and open flame. Only operated in open, well-ventilated area. Store fuel in cool, dry area. Keep the fuel bottle cap tightly closed. Clean up any leak or excess fuel before starting the engine.
7. This product, its parts and its construction tools can be harmful to your health. Always exercise extreme caution when assembling and or operating this product. Do not touch any moving parts of the model while operating.
8. Check your radio frequency with the proper operating frequency of the area or country. Always check to see if there are any modelers operating on the same frequency as yours. Also Check your radio for proper operation before operation a model.

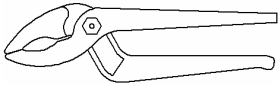
# Required Equipment for Assembly

## Tools not included in Kit.

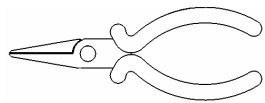
**Cross Wrench**



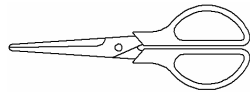
**Pliers**



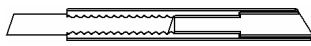
**Needle Nose Pliers**



**Hobby Scissors**

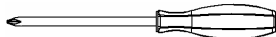


**Hobby Knife**



**Philips Screwdriver**

(#0, #1, #2)



**Grease**



**Thread Lock**



**Instant Glue**



## Included Tools

**1.5mm Allen Wrench**



**2.0mm Allen Wrench**



**2.5mm Allen Wrench**



**3.0mm Allen Wrench**

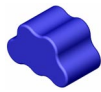


Notice: The below items are needed for completion of the ZX-1.(KIT, PRO KIT) They are not included with this kit (unless noted). And should be obtained from your local hobby shop.

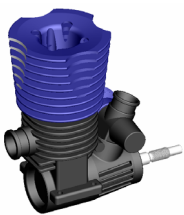
## Additional items needed for Completion



AA x 8 Alkaline Batteries for Transmitter



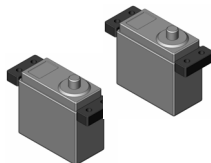
6V Battery For Receiver (CR3-0003)



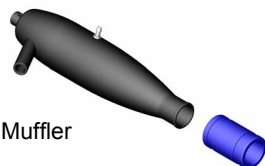
.21 Class Rear Exhaust Engine



Fuel Bottle (CR2-033)



Servo



Muffler

Muffler Connecting Tube (Silicone)



Manifold



Glow Starter (CR3-0001)

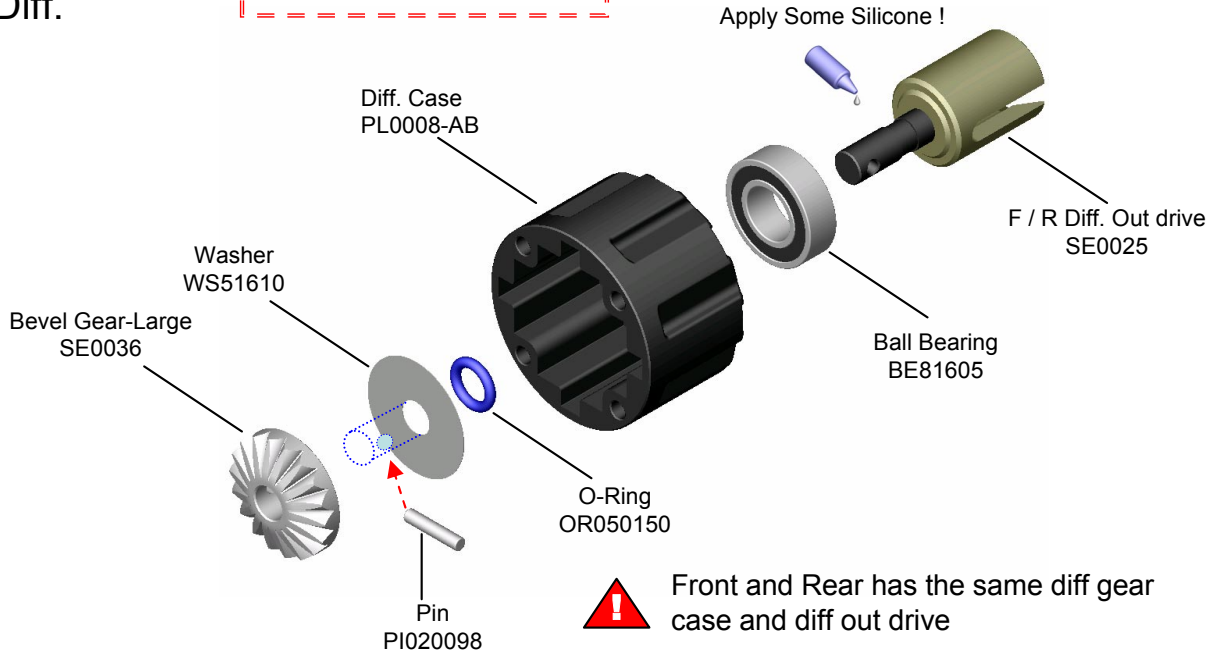
## Screw Chart

These are the actual sizes of the screws that kit can use.

R/H 3x6mm	F/H 4x8mm
R/H 3x8mm	F/H 4x10mm
R/H 3x10mm	F/H 4x12mm
R/H 3x12mm	F/H 4x16mm
R/H 3x16mm	RH/ST 3x8mm
R/H 3x20mm	RH/ST 3x10mm
R/H 3x23mm	RH/ST 3x12mm
R/H 3x28mm	RH/ST 3x16mm
F/H 3x6mm	RH/ST 3x40mm
F/H 3x8mm	Set 3x3mm
F/H 3x10mm	Set 4x4mm
F/H 3x12mm	Set 3x5mm
F/H 3x15mm	Set 4x8mm
F/H 3x20mm	Set 3x12mm
F/H 3x25mm	Set 5x5mm
F/H 3x30mm	Cap 2.6x10mm
FH/ST 3x35mm	Cap 3x10mm
FH/ST 3x40mm	Cap 3x12mm
	Cap 3x25mm
	B/H 2x8mm
	Set 5x35mm
	Set 5x45mm

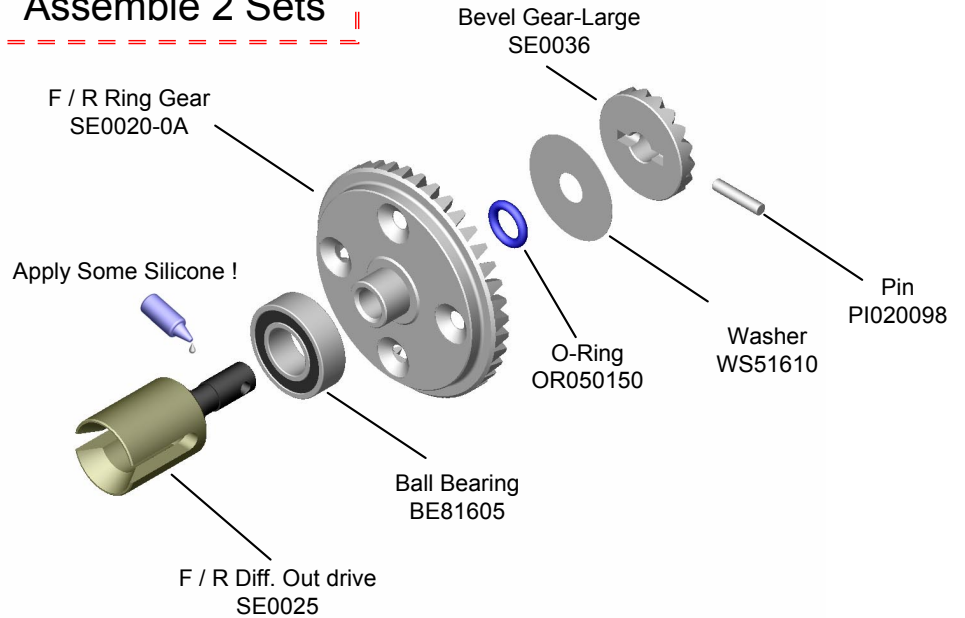
**1** Bag - A  
Front gear Diff.

**Assemble 2 Sets**



**2** Bag - A  
Front gear Diff.

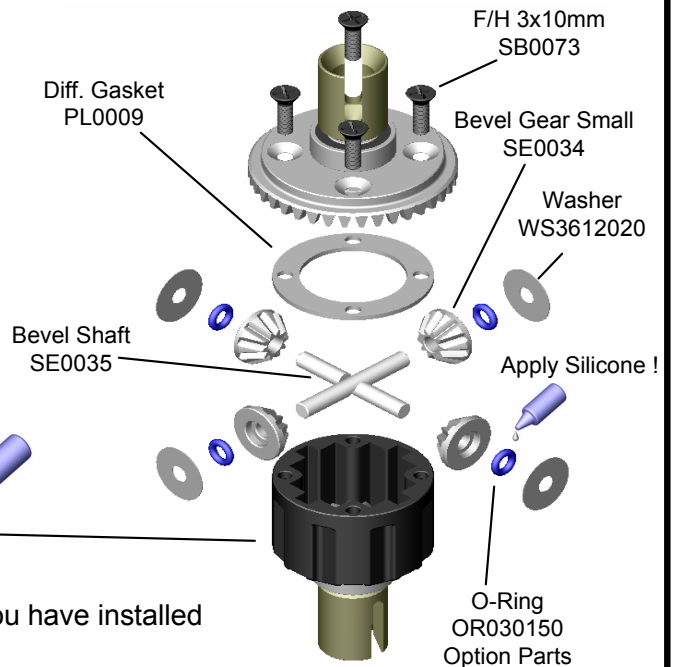
**Assemble 2 Sets**



**3** Bag - A  
Assemble Front gear Diff.

Fill differential's using standard set up:  
Front: Silicone Oil 3000  
Mark gear boxed as FRONT  
Apply some grease on the O-ring.

O-Ring OR030150(Not included) is an Option Part for Different Driving Setting



**!** Fill up with silicone oil after you have installed the gear sets in the gear box.

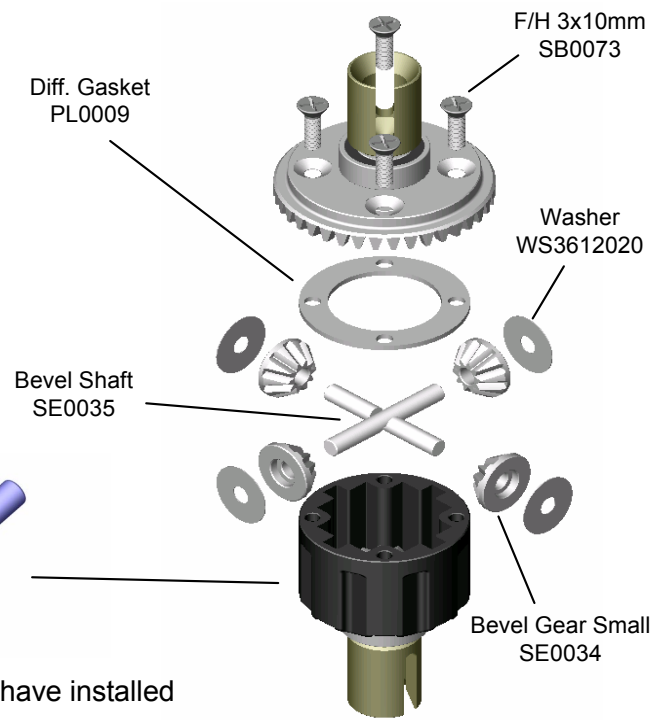
## 4 Bag - A

### Assemble Rear gear Diff.

Fill differential using standard set up:  
Rear: Silicone Oil 1000  
Mark gear box as REAR

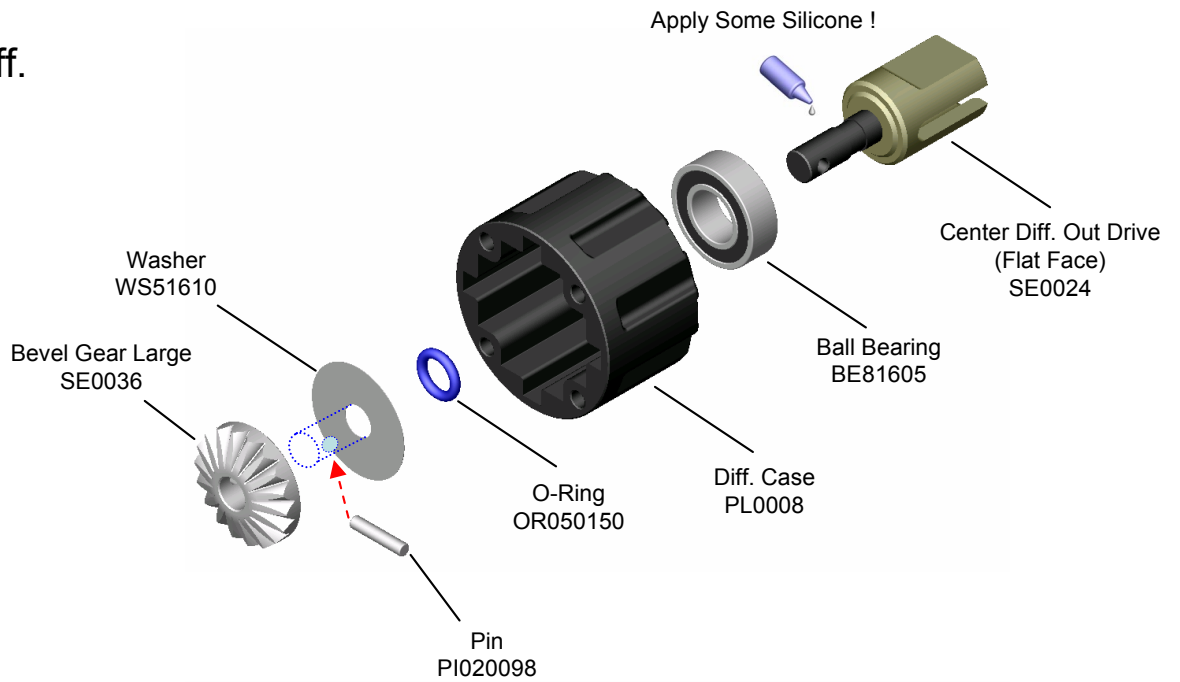


Fill up with silicone oil after you have installed the gear sets in the gear box.



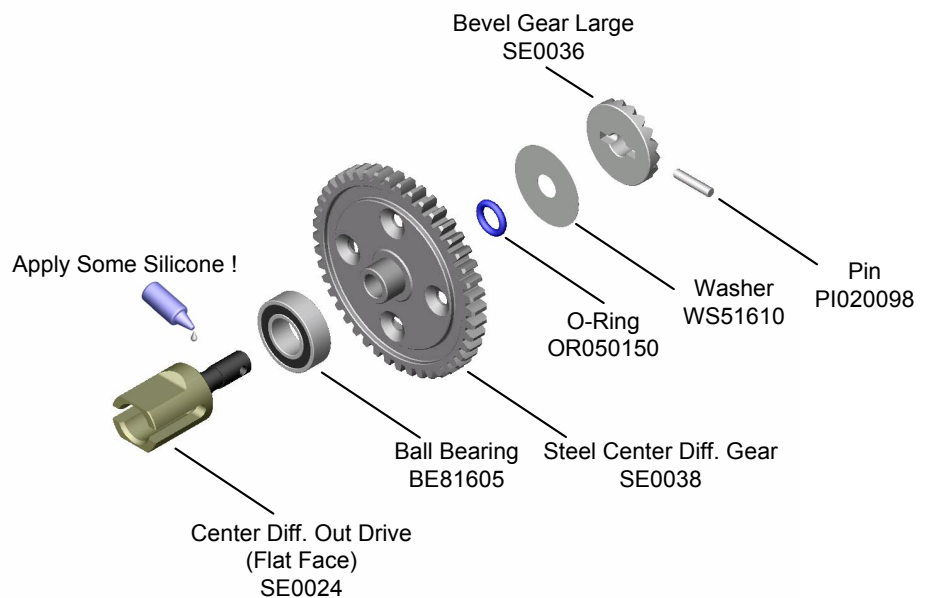
## 5 Bag - A

### Center gear Diff.



## 6 Bag - A

### Center gear Diff.



7

### Bag - A

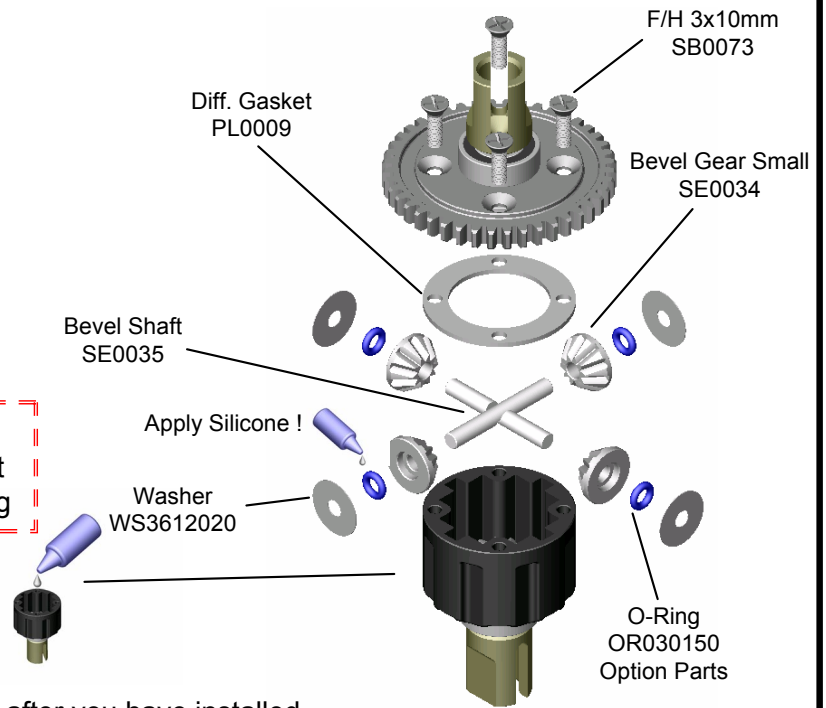
## Assembly Center gear Diff box

Fill differential using standard set up:

Center: 5000

Apply some grease on the O-ring.

O-Ring OR030150(Not included) is an Option Part for Different Driving Setting

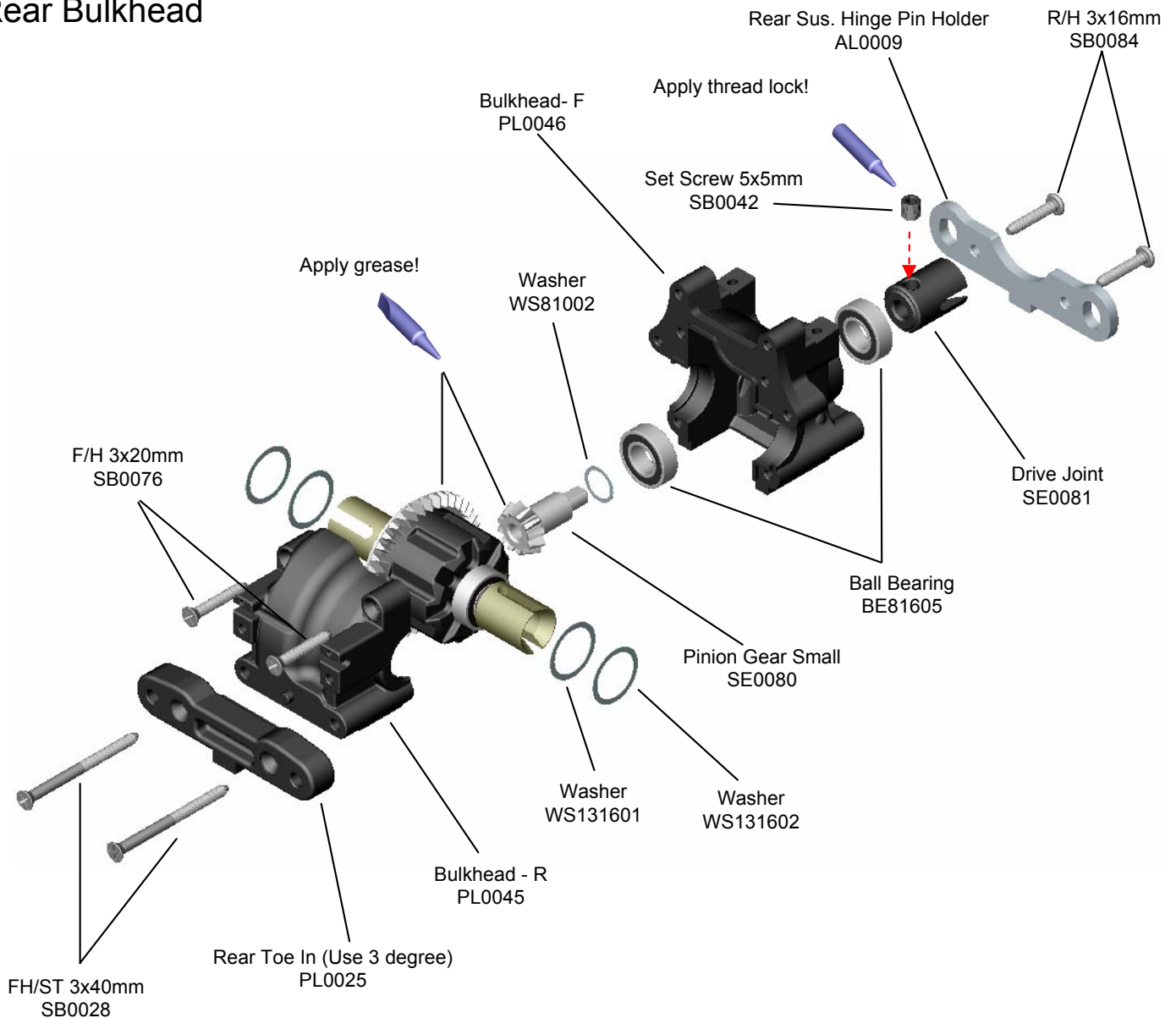


Fill up with silicone oil after you have installed the gear sets in the gear box.

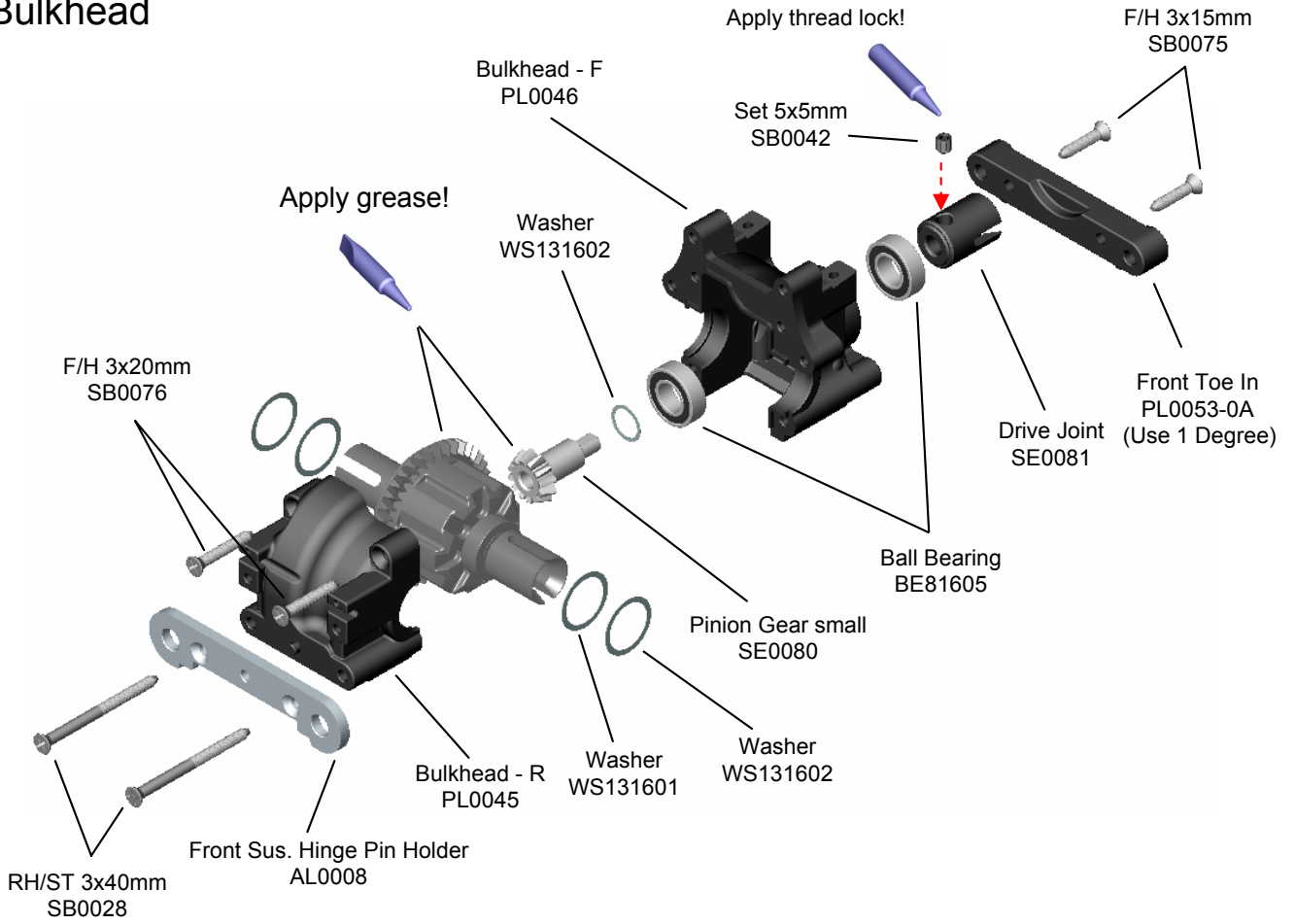
8

### Bag - B

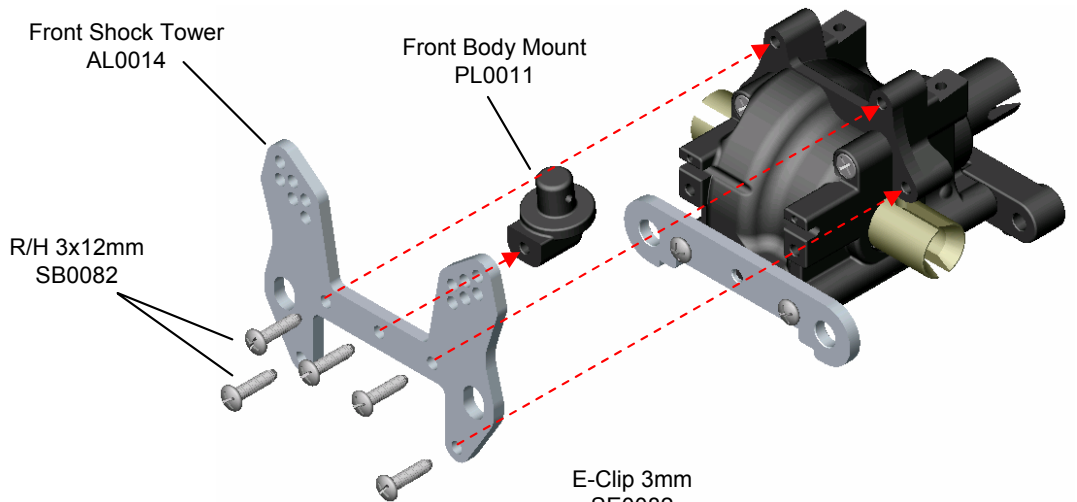
## Rear Bulkhead



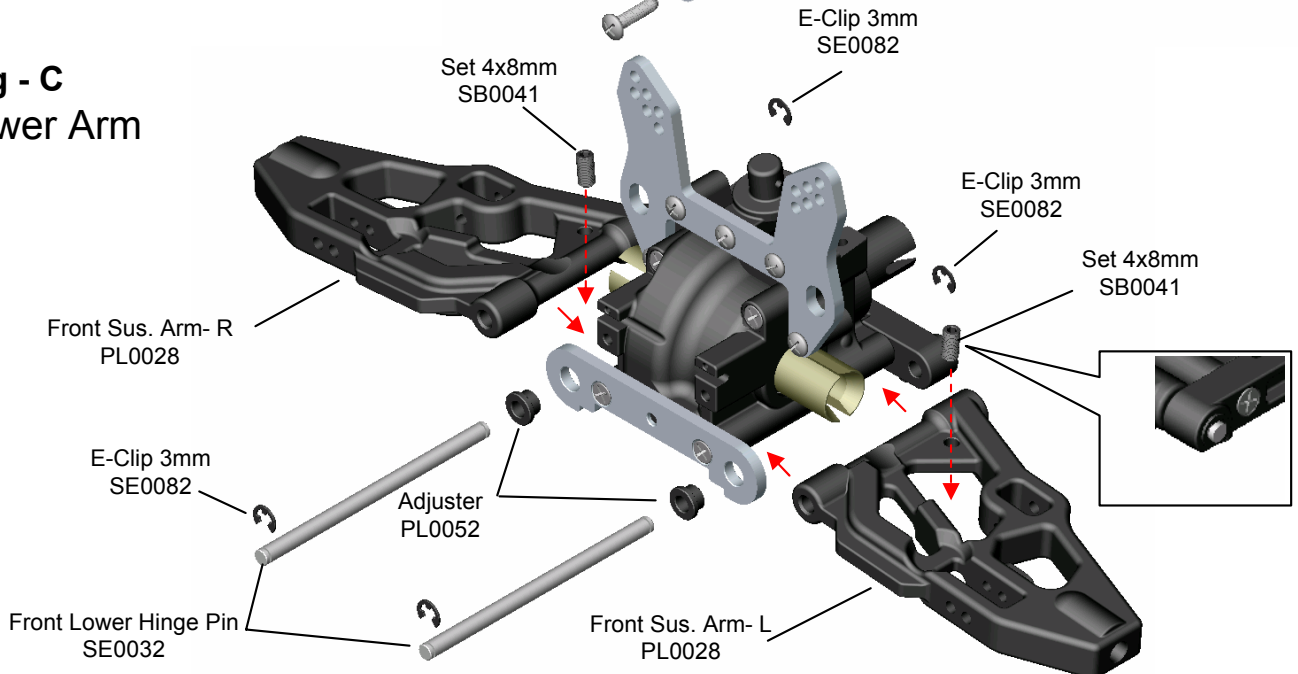
**9** Bag - B  
Front Bulkhead



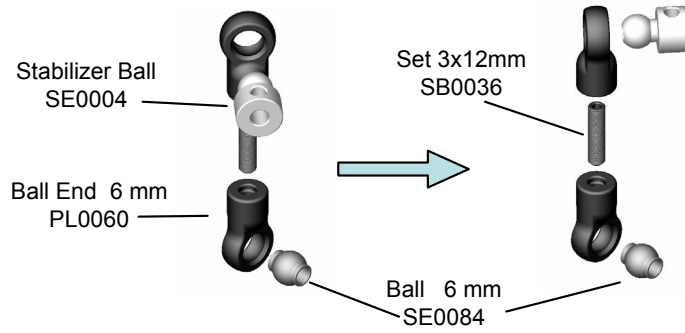
**10** Bag - C  
Front Shock Tower



**11** Bag - C  
Front Lower Arm




## 12 Bag - D Front Sway Bar

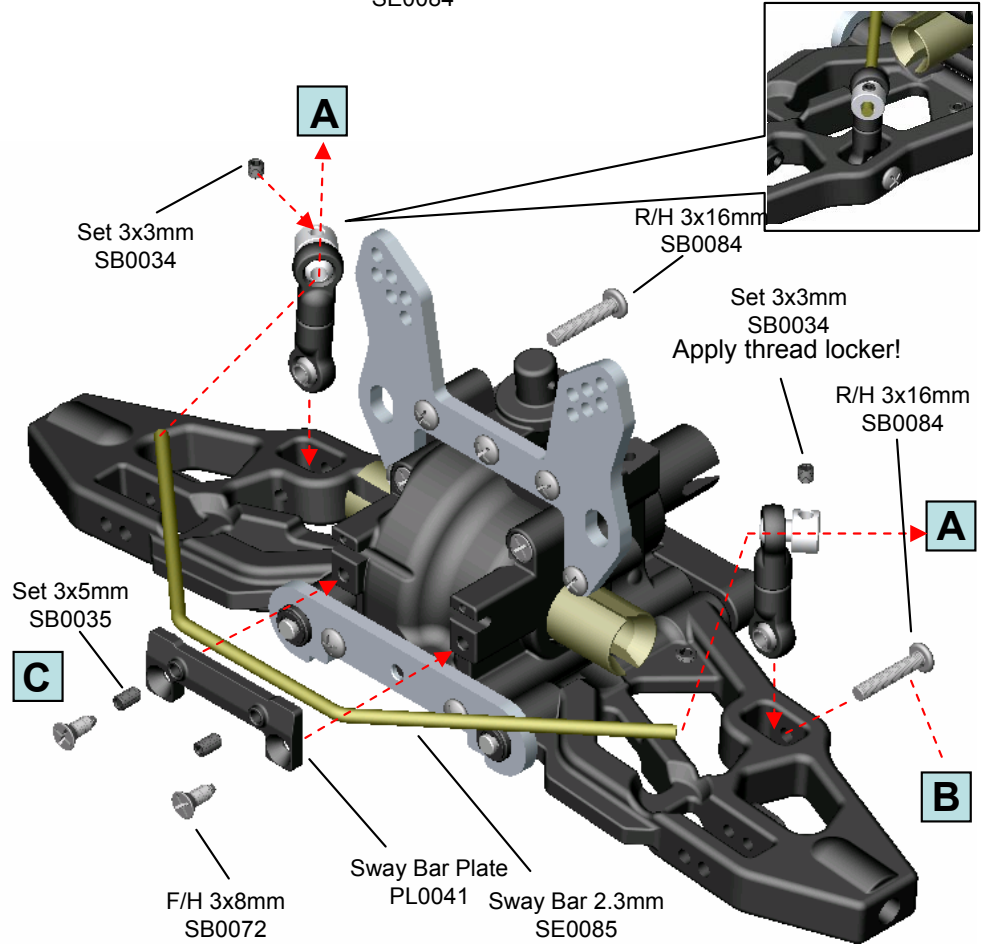


**Sway Bar mounts:**  
Tighten the ball ends until they touch and adjust so that they are at 45-degree angle to each other.

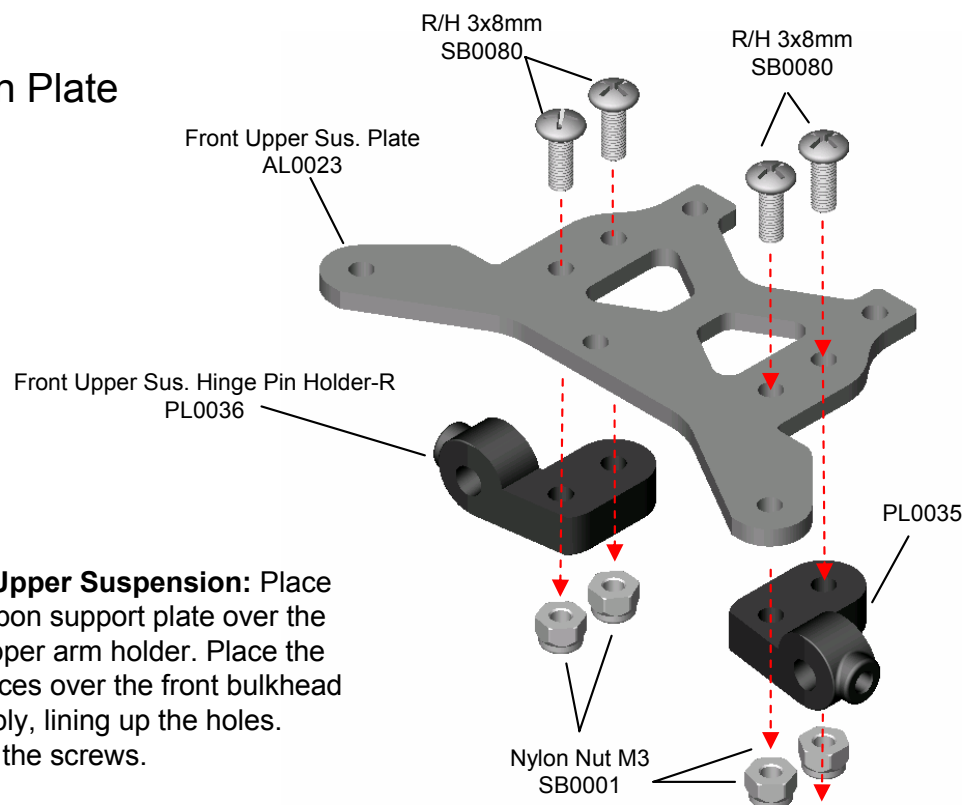
Assemble 4 Sets

 **Tips: Follow the Steps**  
**A** → **B** → **C**

**Sway Bar:** Set Screw should not be tightened to the point of causing the sway bar to bind. Check to make sure the sway bar (SE0085) rotates freely. Fasten the sway bar mounts using the SB0035



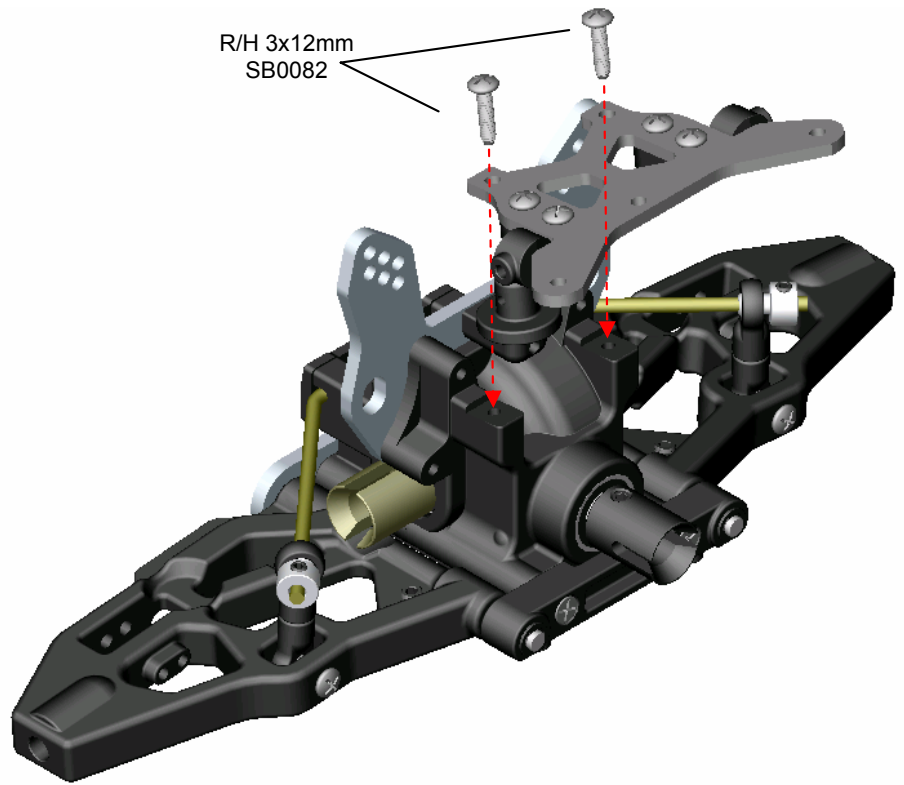
## 13 Bag - D Front Upper Suspension Plate




**Front Upper Suspension:** Place the carbon support plate over the front upper arm holder. Place the two pieces over the front bulkhead assembly, lining up the holes. Fasten the screws.

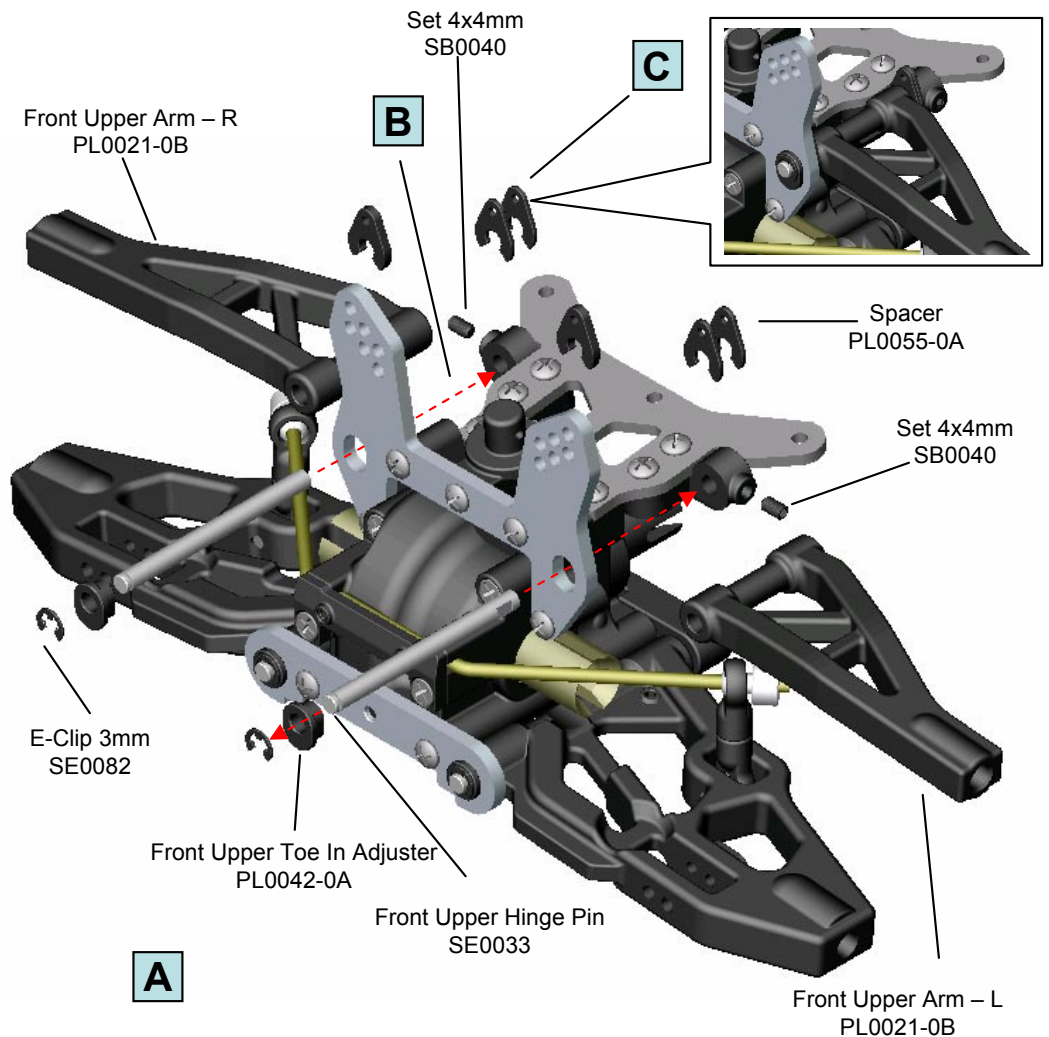


**14** Bag - D  
Front Upper Suspension



**15** Bag - D  
Front Upper Suspension Arm

 Tips: Follow the Steps  
A → B → C



**Front Upper Arms:** Place the Hinge Pin through the Front upper Toe-in adjuster . Attach e-clips to the end of each upper hinge pin in the groove.

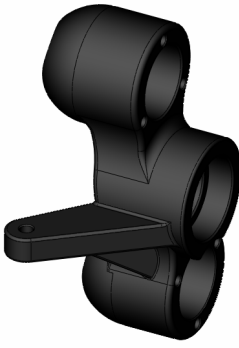
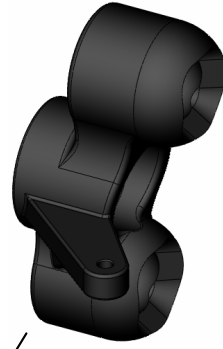
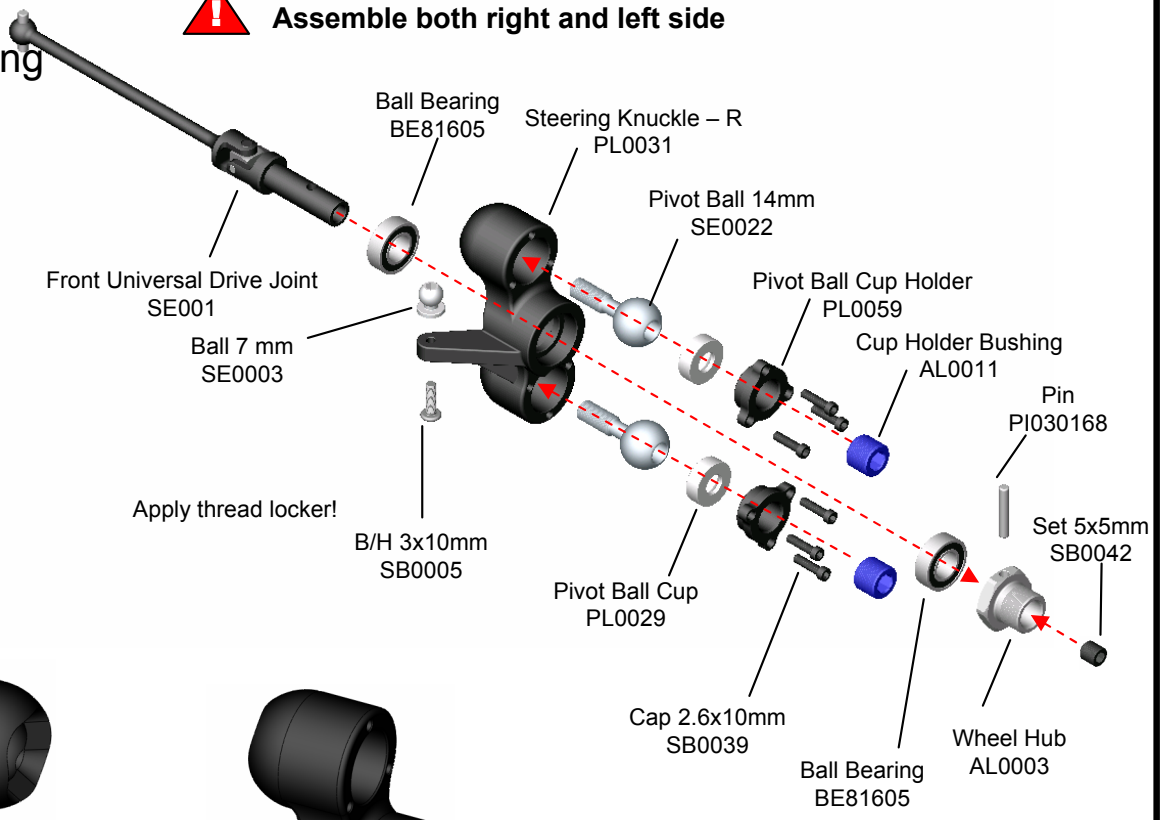
Place the arms between the shock tower and upper arm holder. Slide the pins, into the front upper suspension holder.

After sliding the pins, between the shock tower and upper arm holder, make sure the flat portion of the hinge pin is facing out. Tighten the SB0040 set screw.

Check for free movement of the upper arm.

**16** Bag - E  
Right / Left Steering

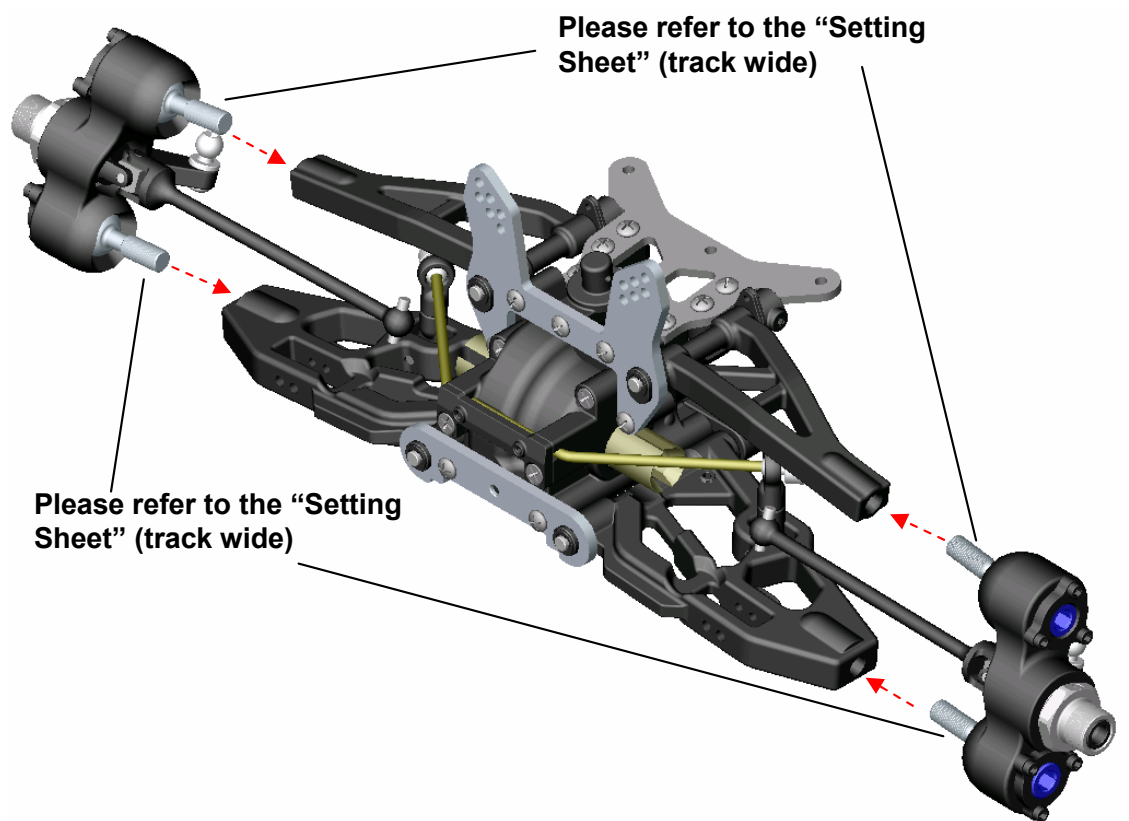
 **Assemble both right and left side**



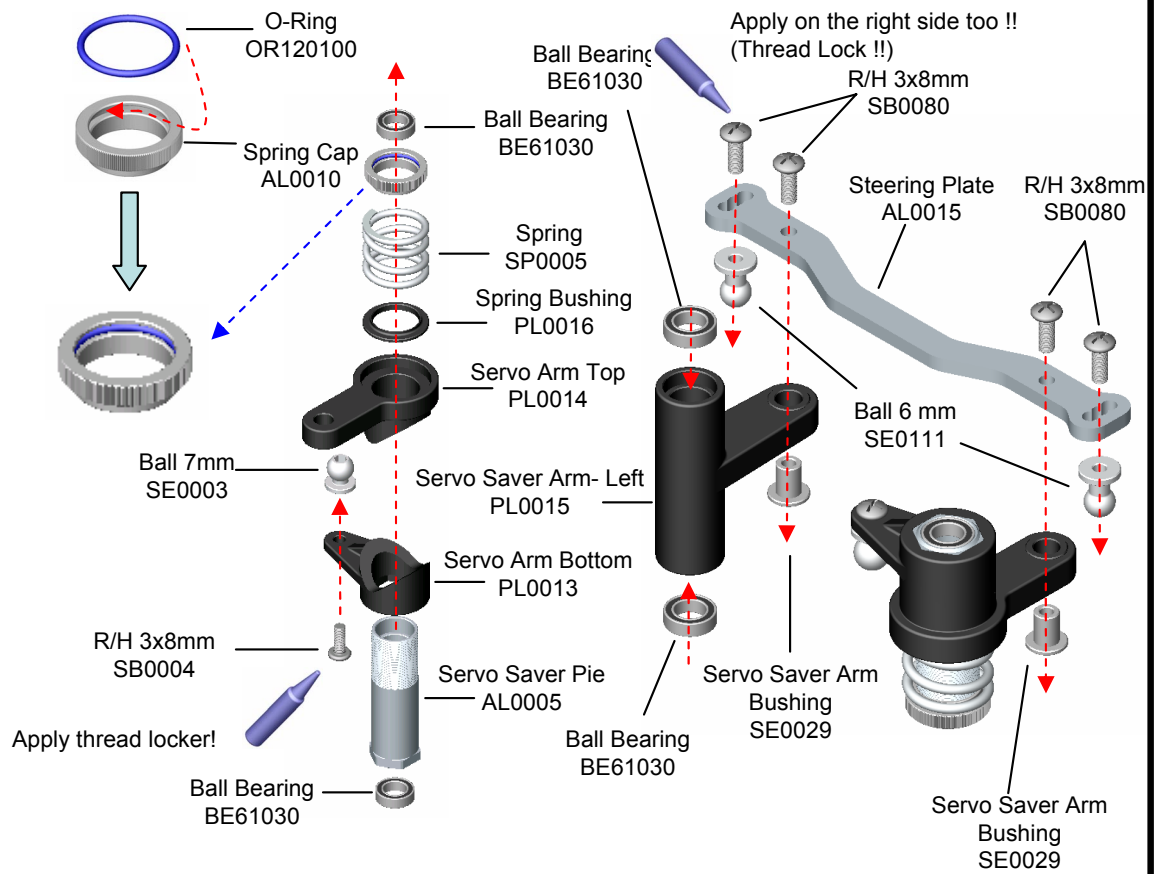
Steering Knuckle-L

Steering Knuckle-R

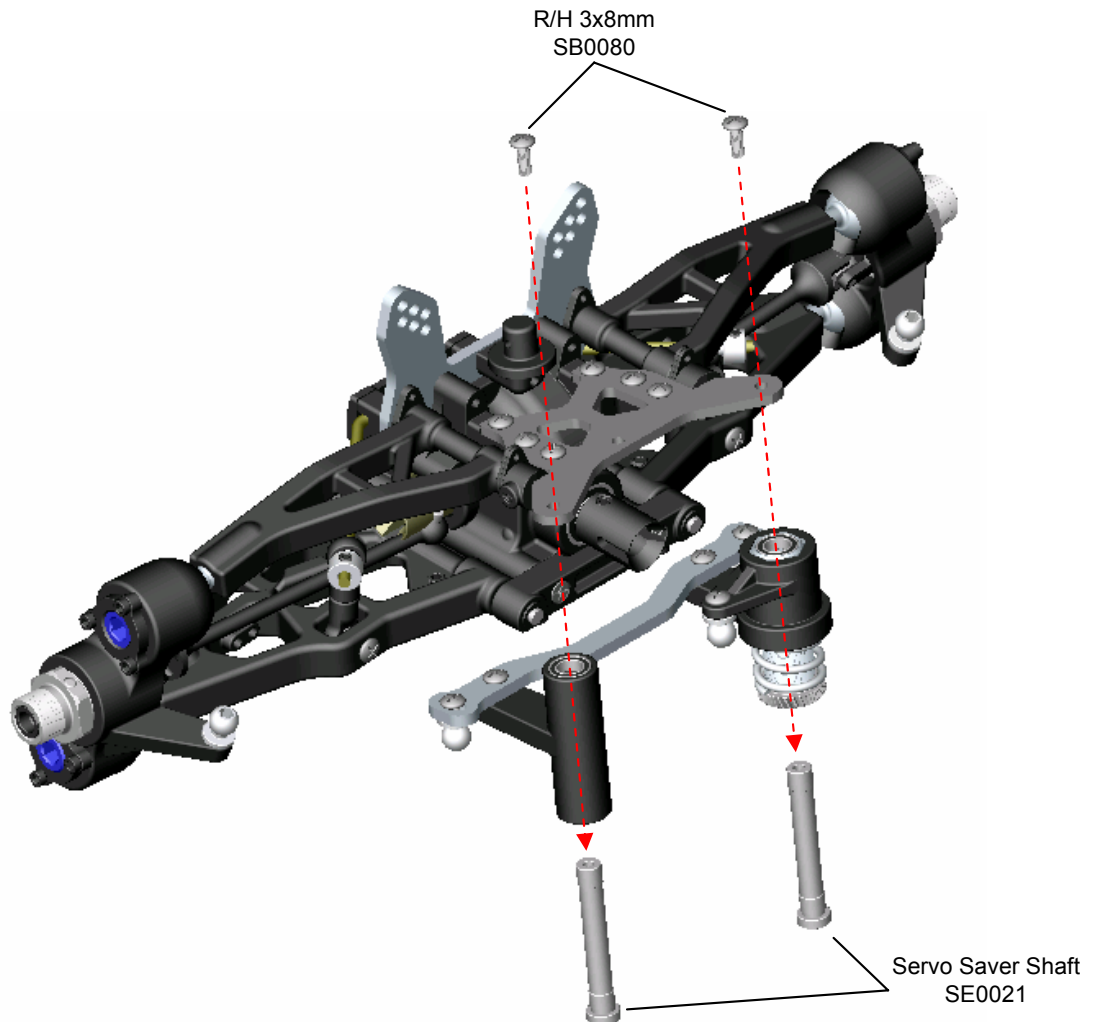
**17** Bag - E  
Front Steering System



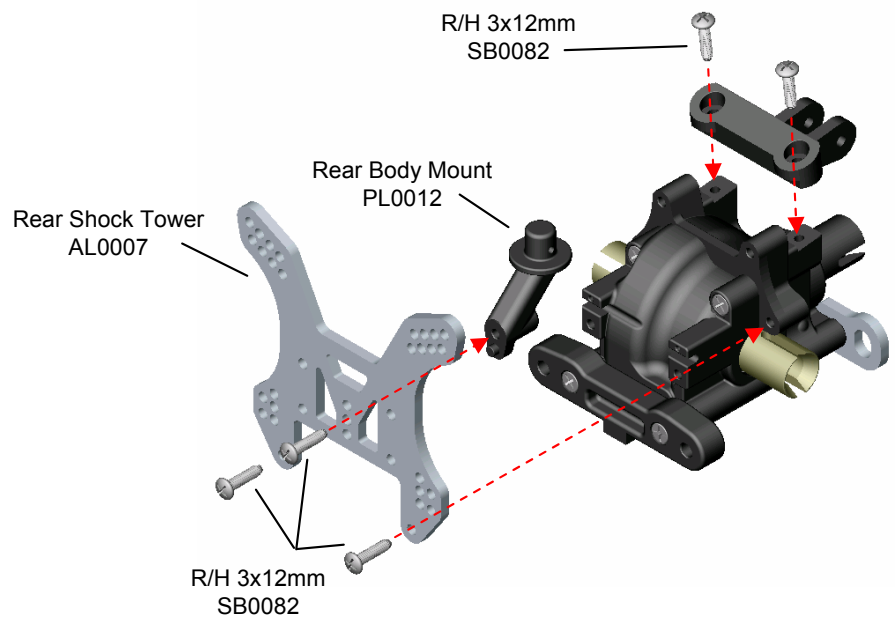
# 18 Bag - F Servo Saver



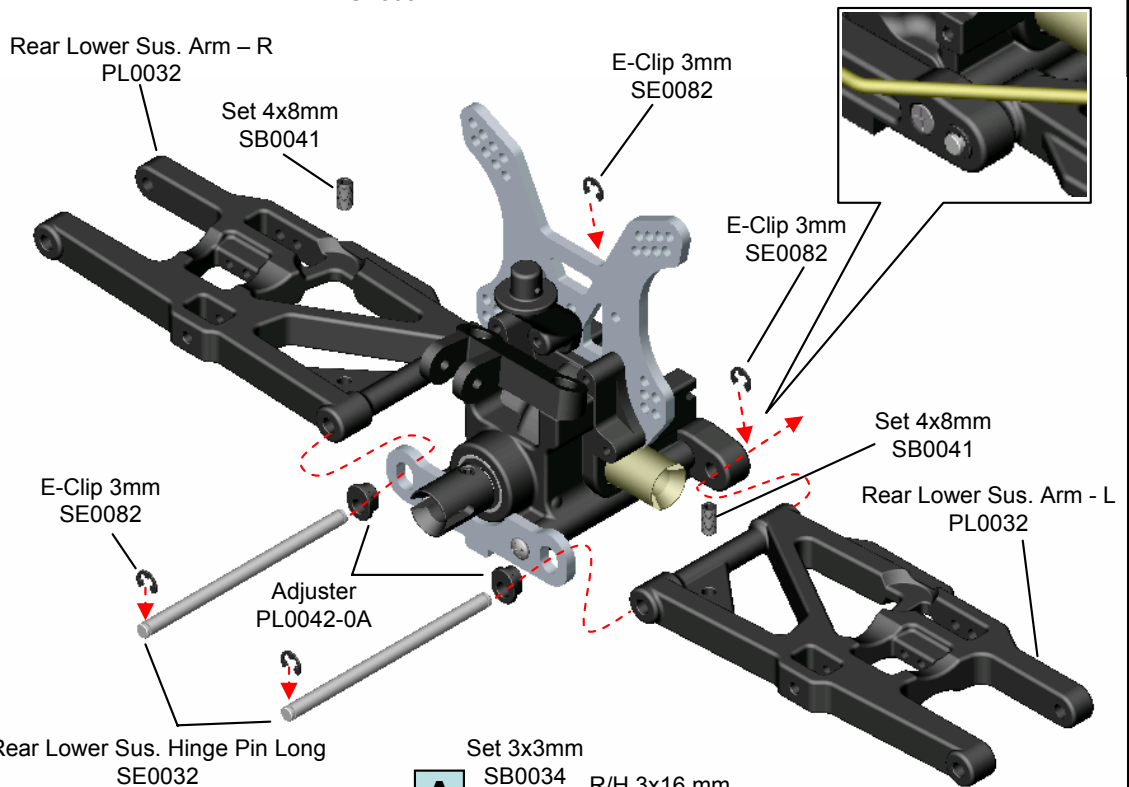
# 19 Bag - F Servo Saver Shaft



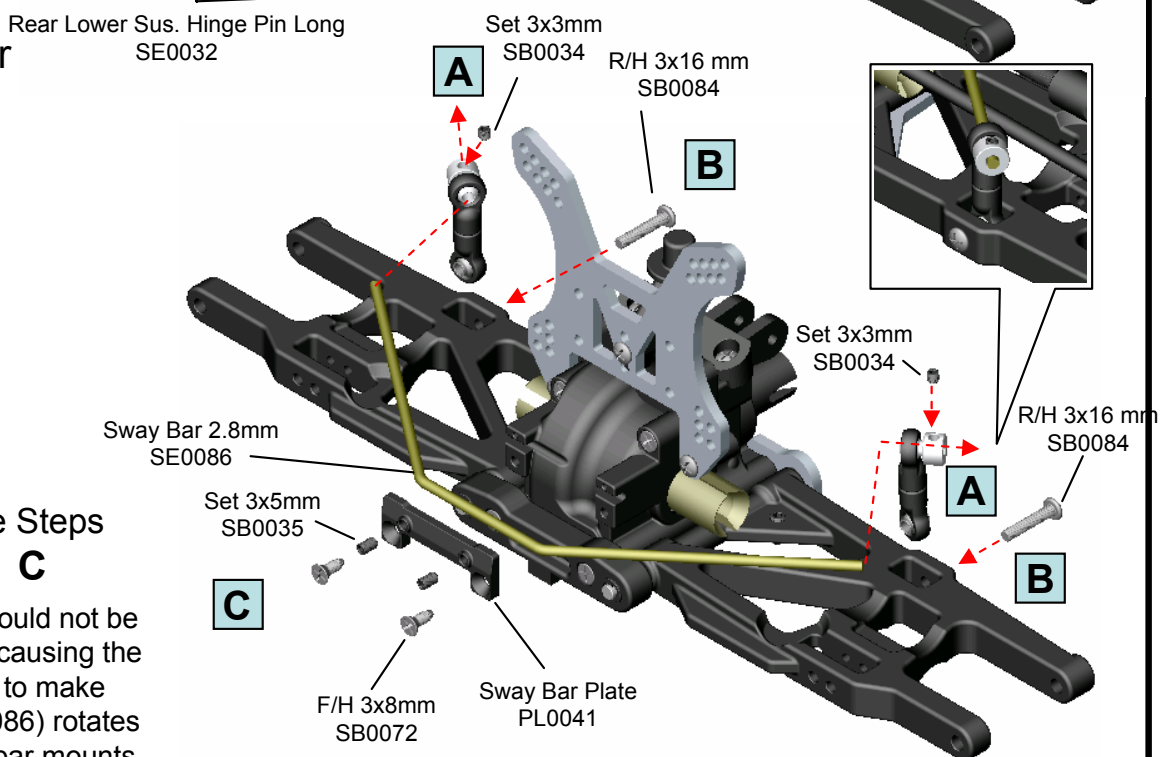
**20** Bag - G  
Rear Shock Tower



**21** Bag - G  
Rear Lower Arm



**22** Bag - G  
Rear Anti-Roll Bar

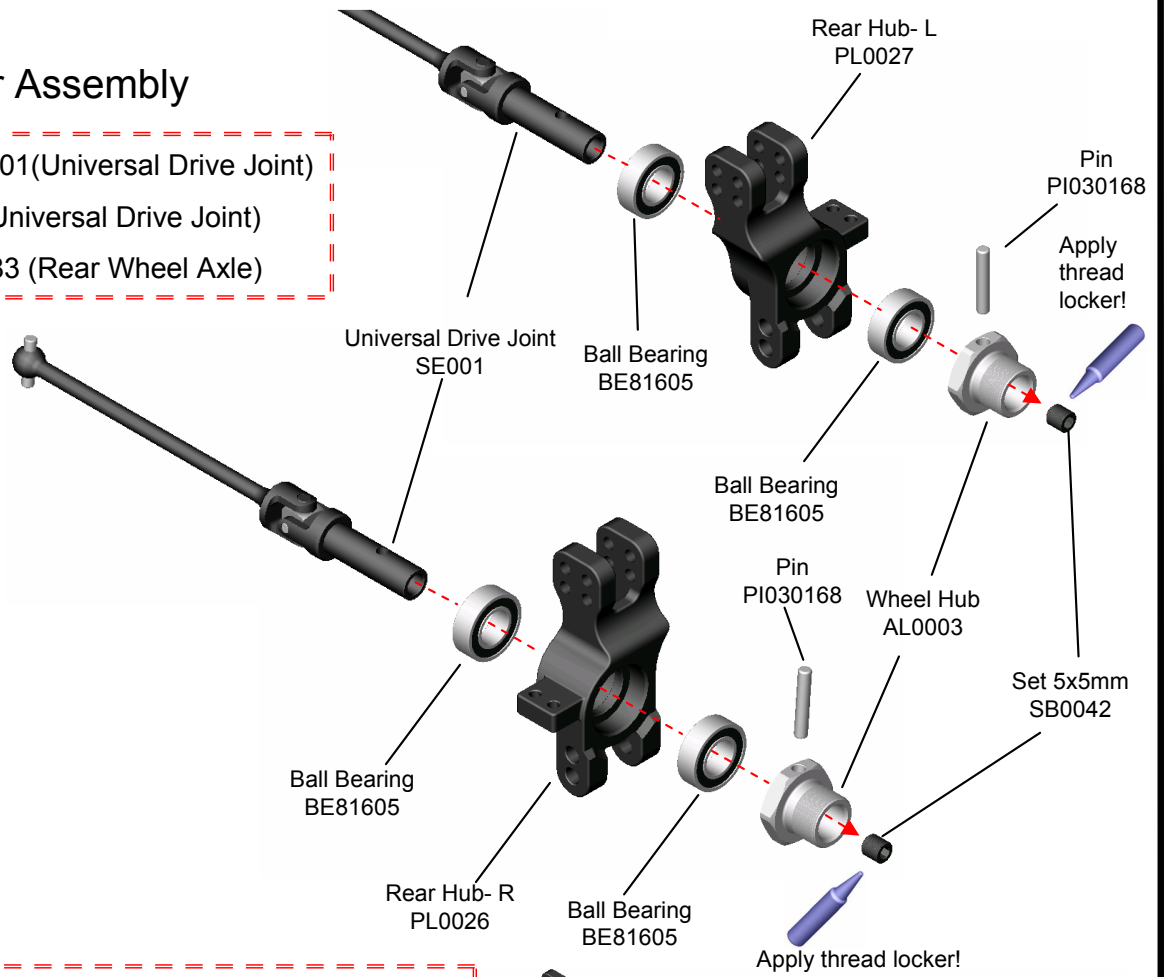


**!** Tips: Follow the Steps  
**A** → **B** → **C**

Sway Bar: Set Screw should not be tightened to the point of causing the sway bar to bind. Check to make sure the sway bar (SE0086) rotates freely. Fasten the sway bar mounts using the Set 3x5mm SB0035

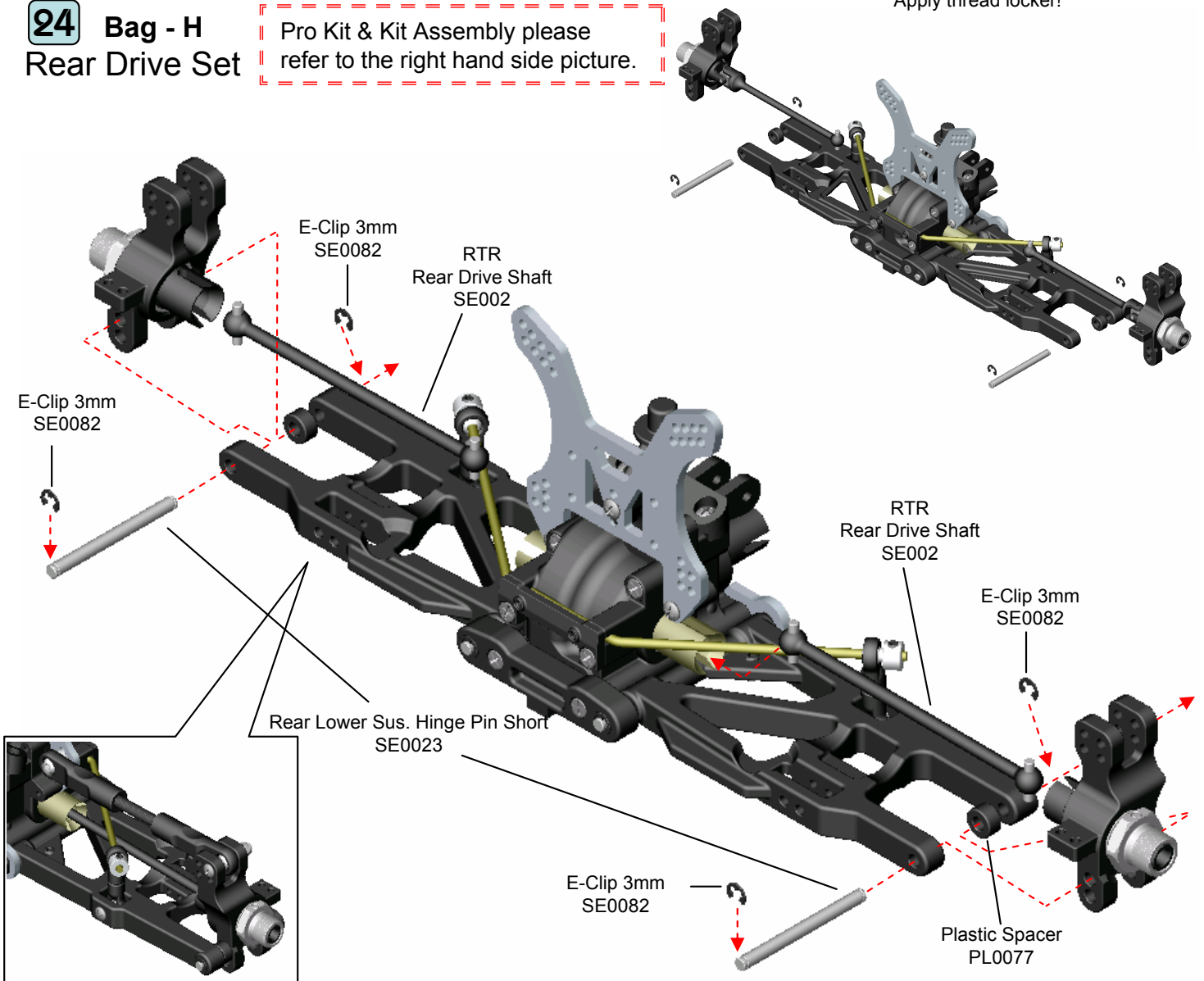
**23 Bag - H**  
**Rear Hub Carrier Assembly**

Pro Kit: Rear Use SE001(Universal Drive Joint)  
 Kit: Rear Use SE001(Universal Drive Joint)  
 RTR: Rear Use SE0083 (Rear Wheel Axle)

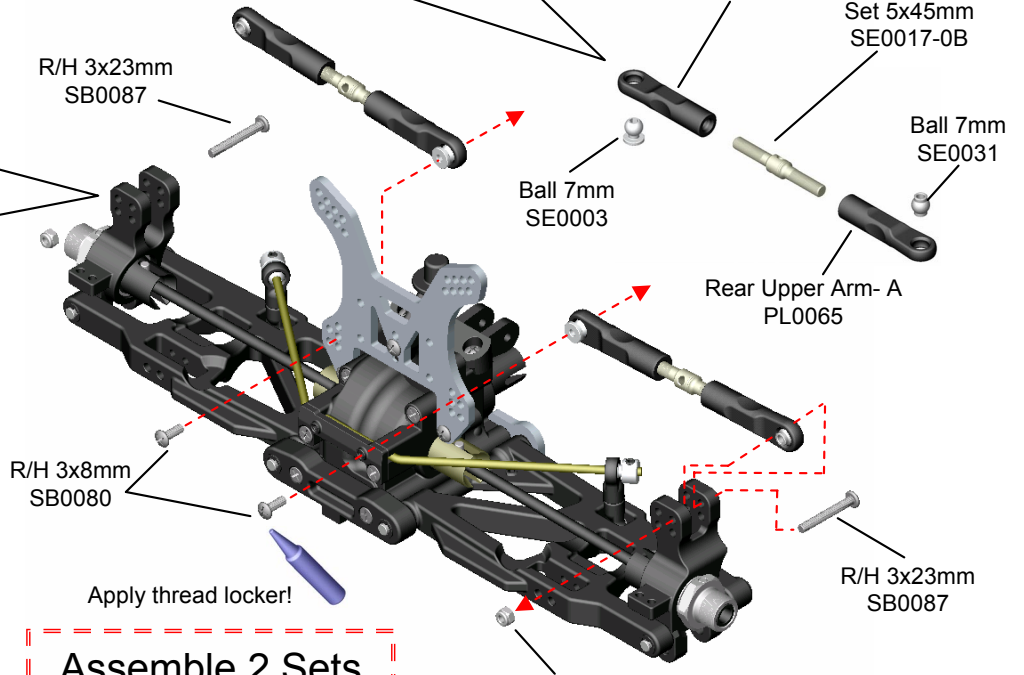
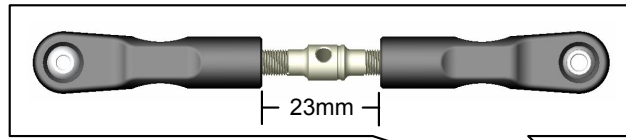


**24 Bag - H**  
**Rear Drive Set**

Pro Kit & Kit Assembly please refer to the right hand side picture.

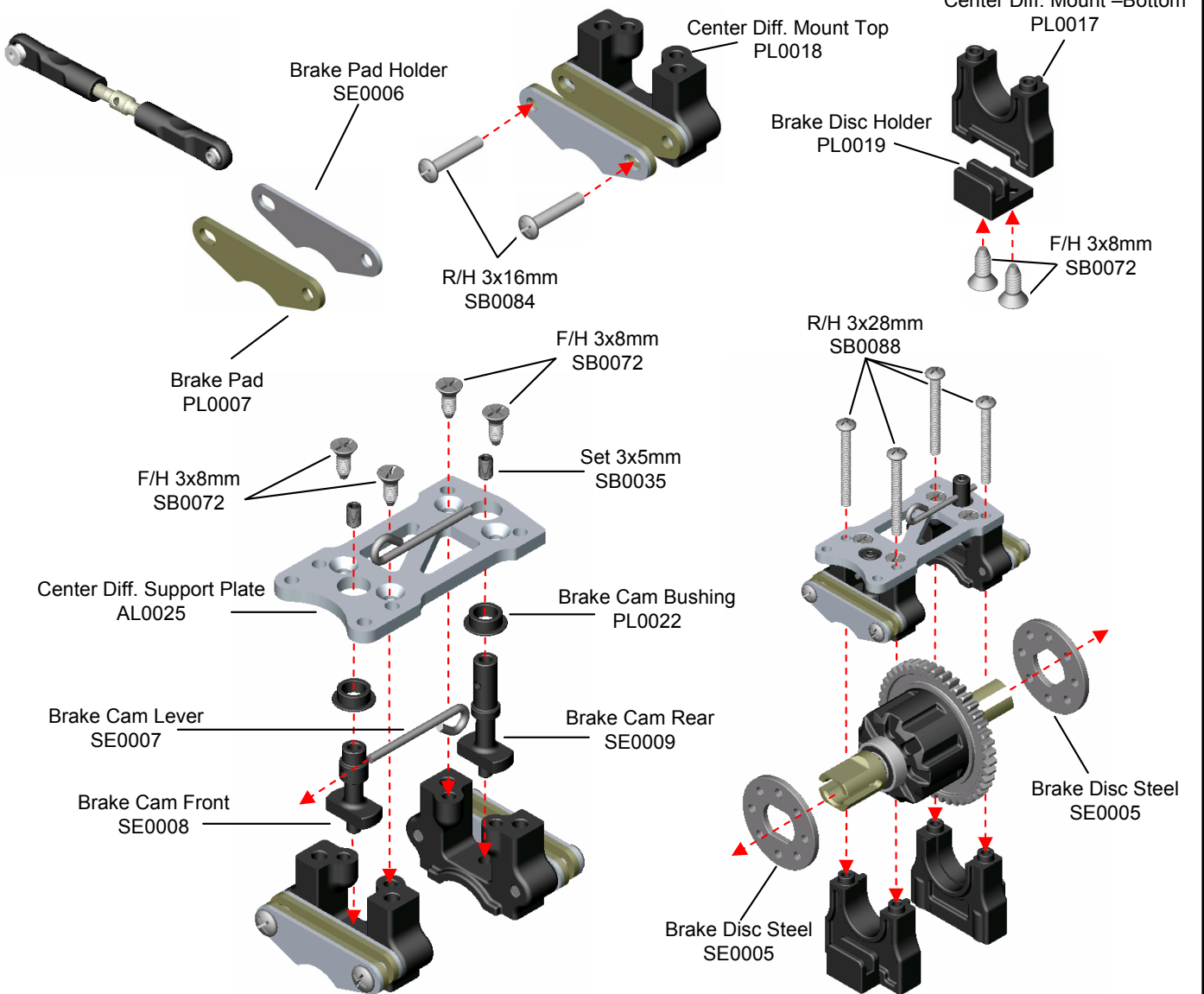


**25** Bag - H  
Rear Upper Arm



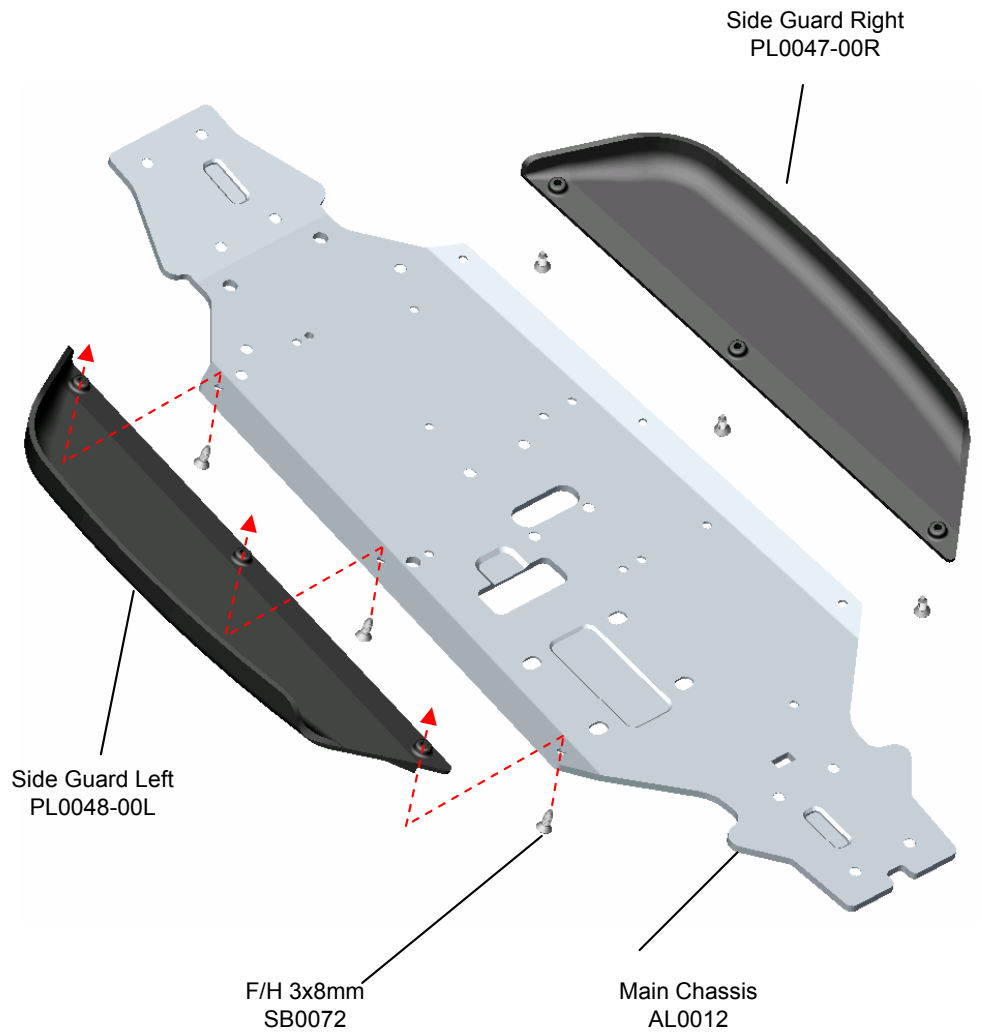
**26** Bag - I  
Center Diff. Mount

Assemble 2 Sets



## 27 Bag - J

### Right / Left Side Guard



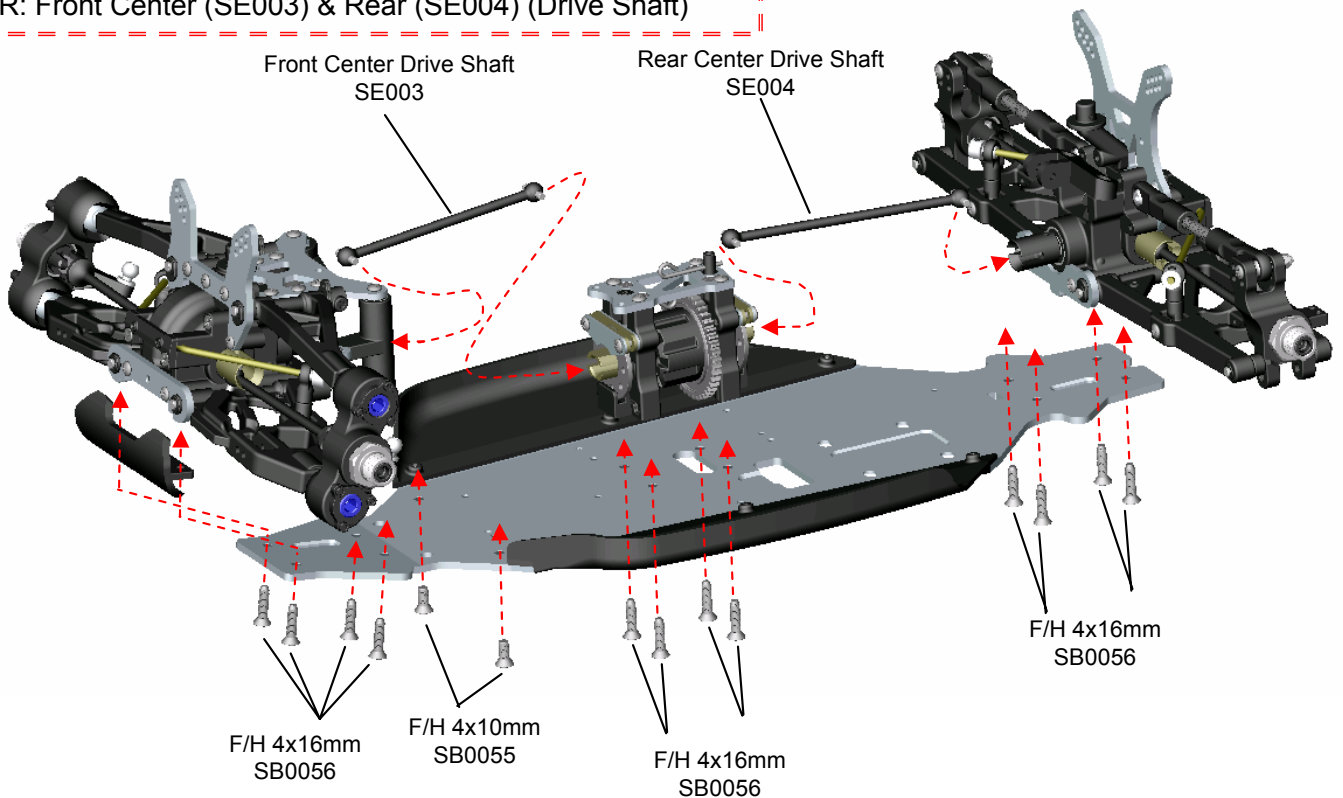
## 28 Bag - J

### Front / Center / Rear Gear Case

Pro Kit: Front Center ( ) & Rear ( ) (Universal Joint)

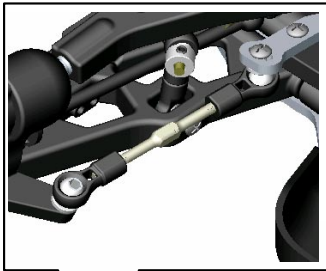
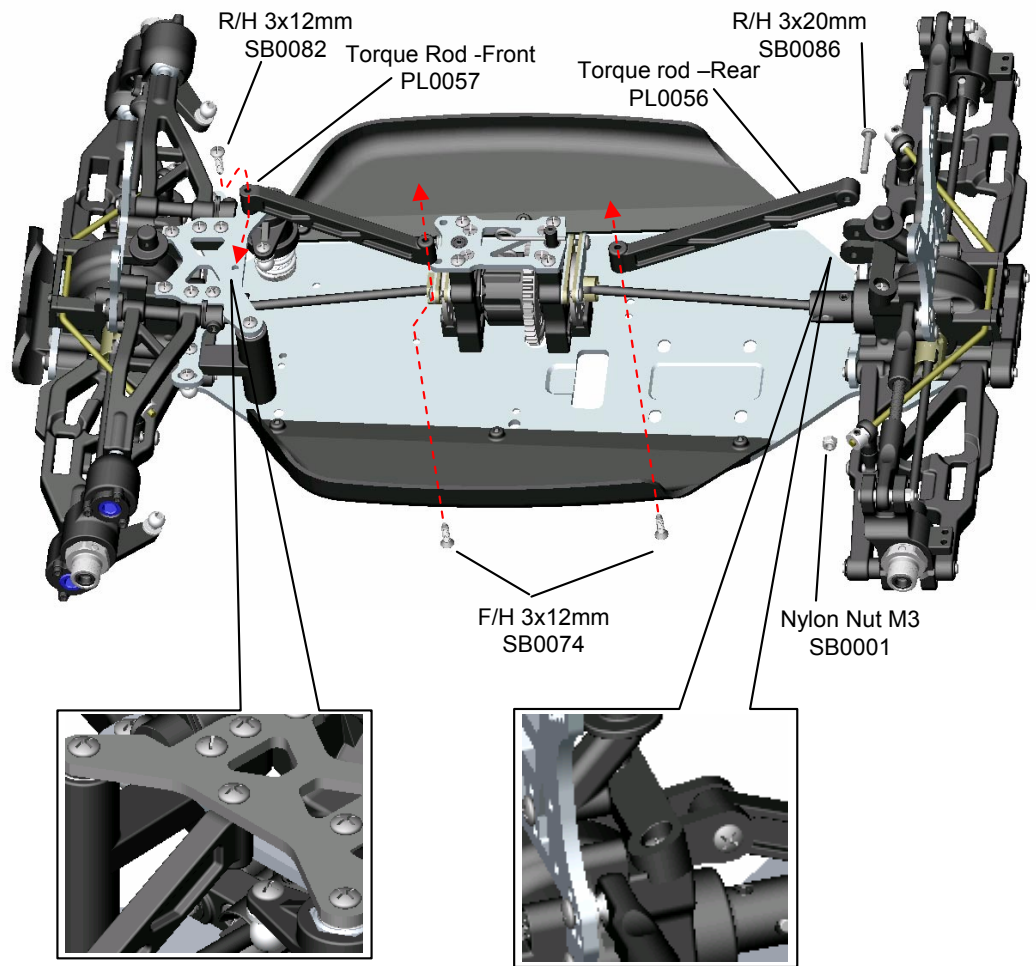
Kit: Front Center (SE003) & Rear (SE004) (Drive Shaft)

RTR: Front Center (SE003) & Rear (SE004) (Drive Shaft)



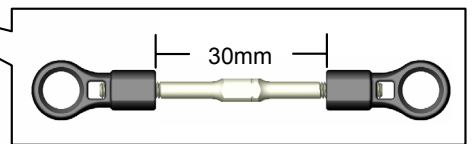
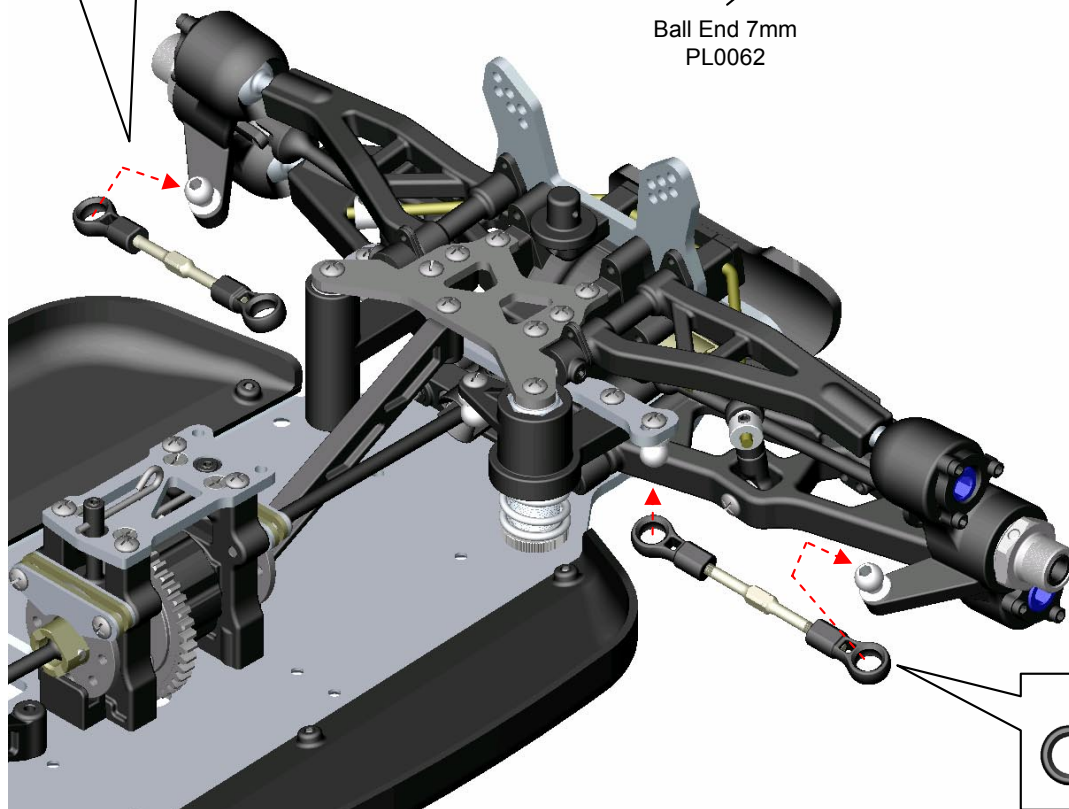
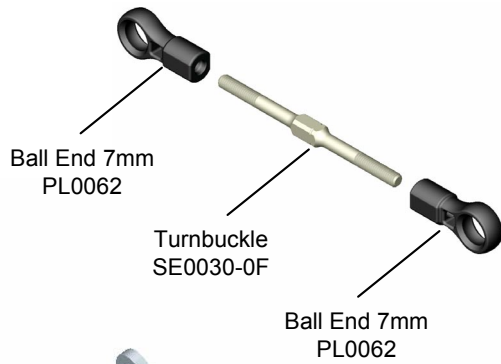
29

### Bag - J Tension Rod



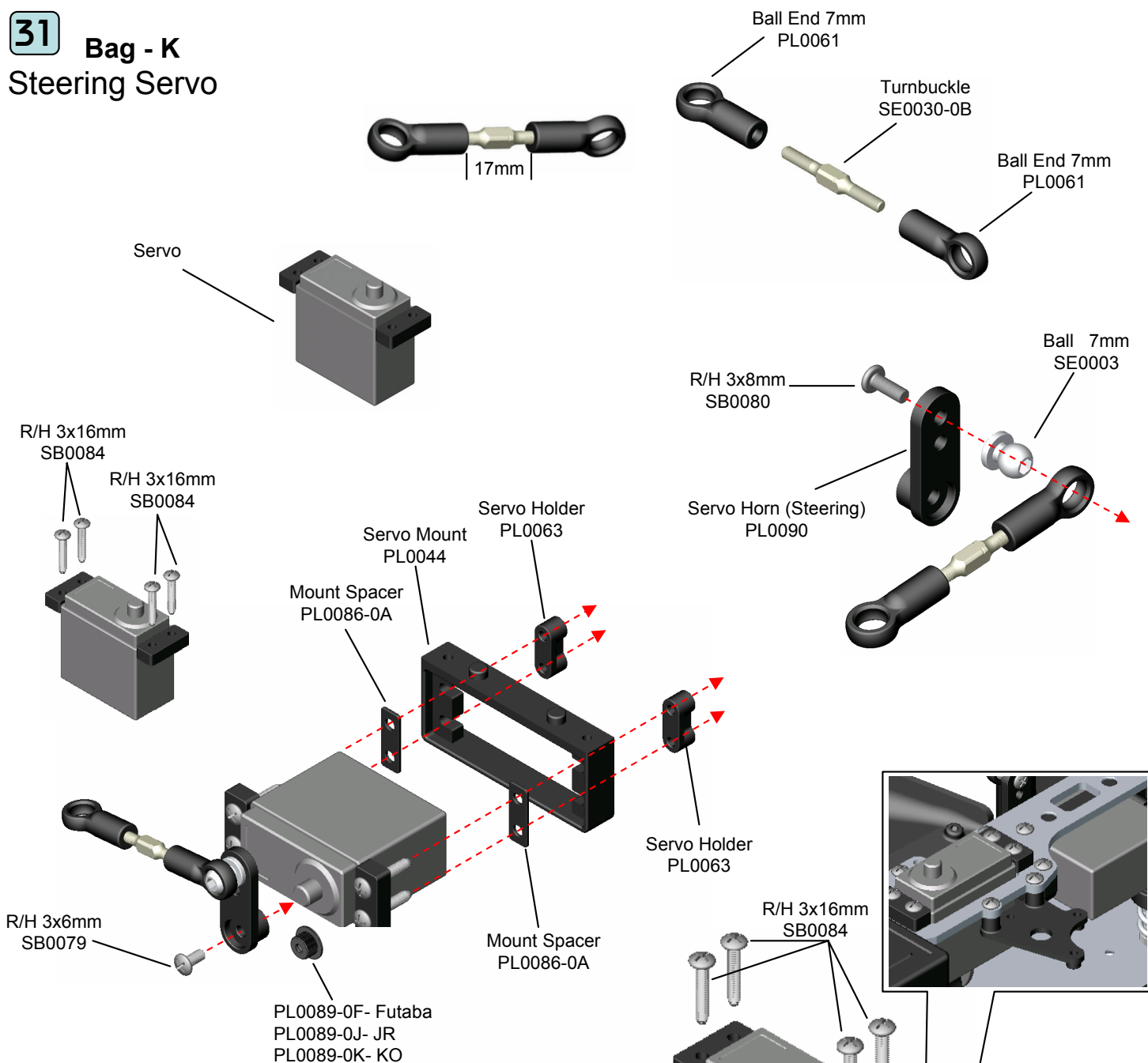
30

### Bag - J Steering Rod

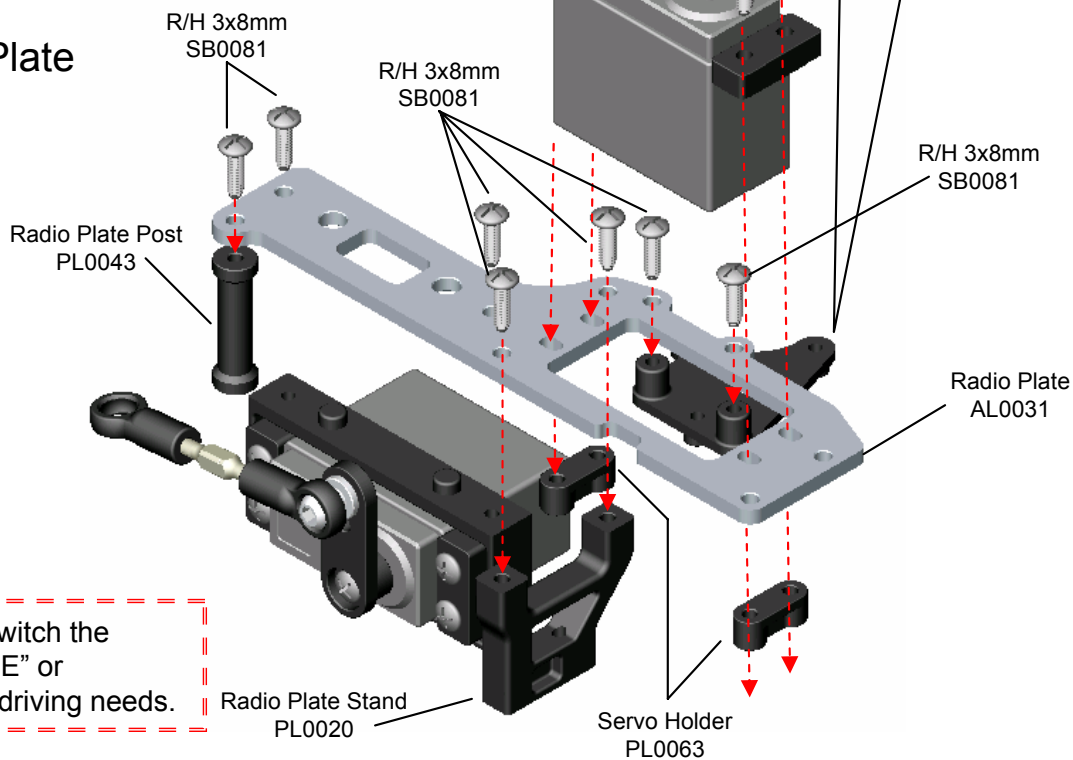




### 31 Bag - K Steering Servo

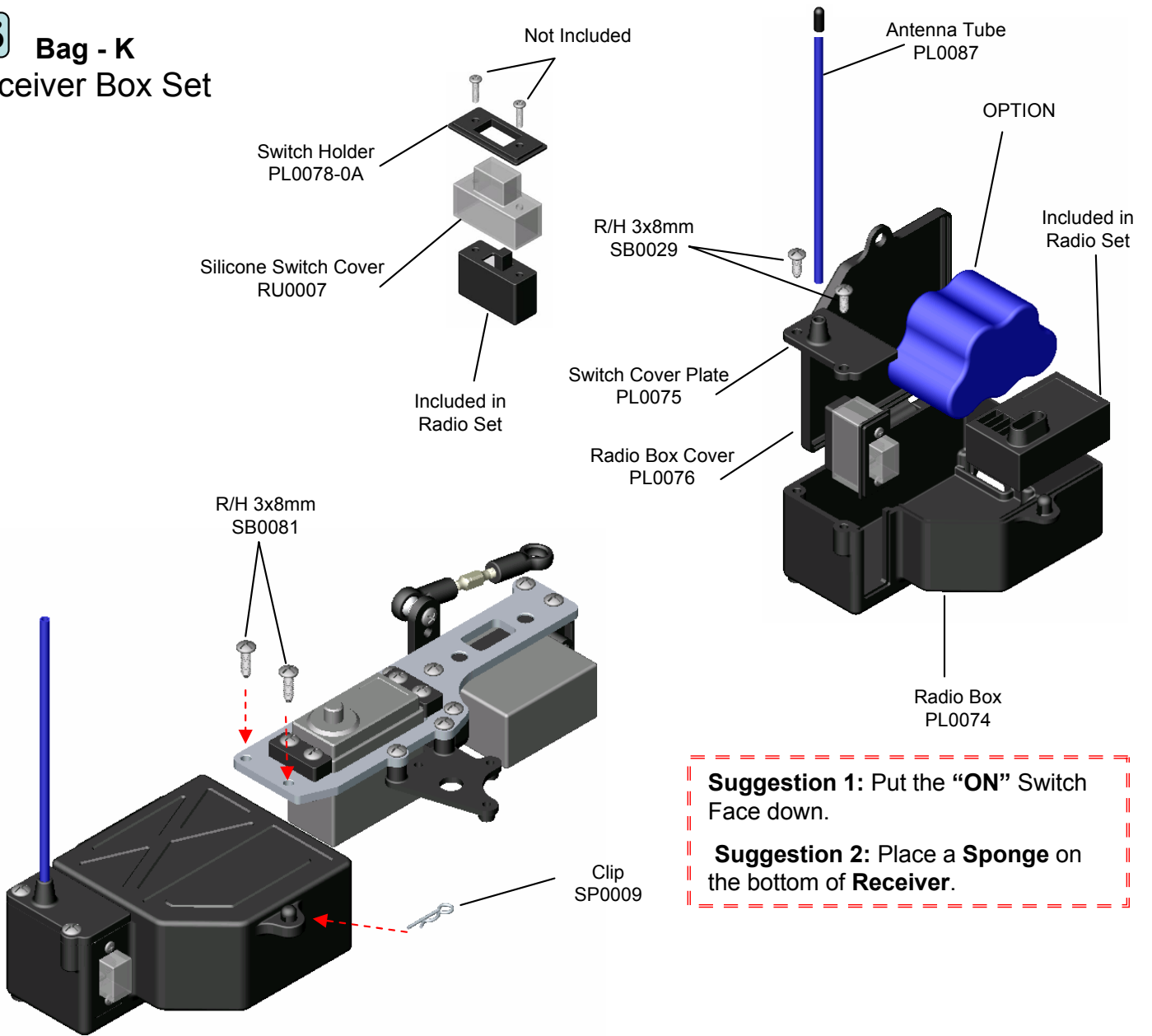


### 32 Bag - K Assembly Radio Plate



**Suggestion:** You can switch the steering servo to "INSIDE" or "OUTSIDE" to suit your driving needs.

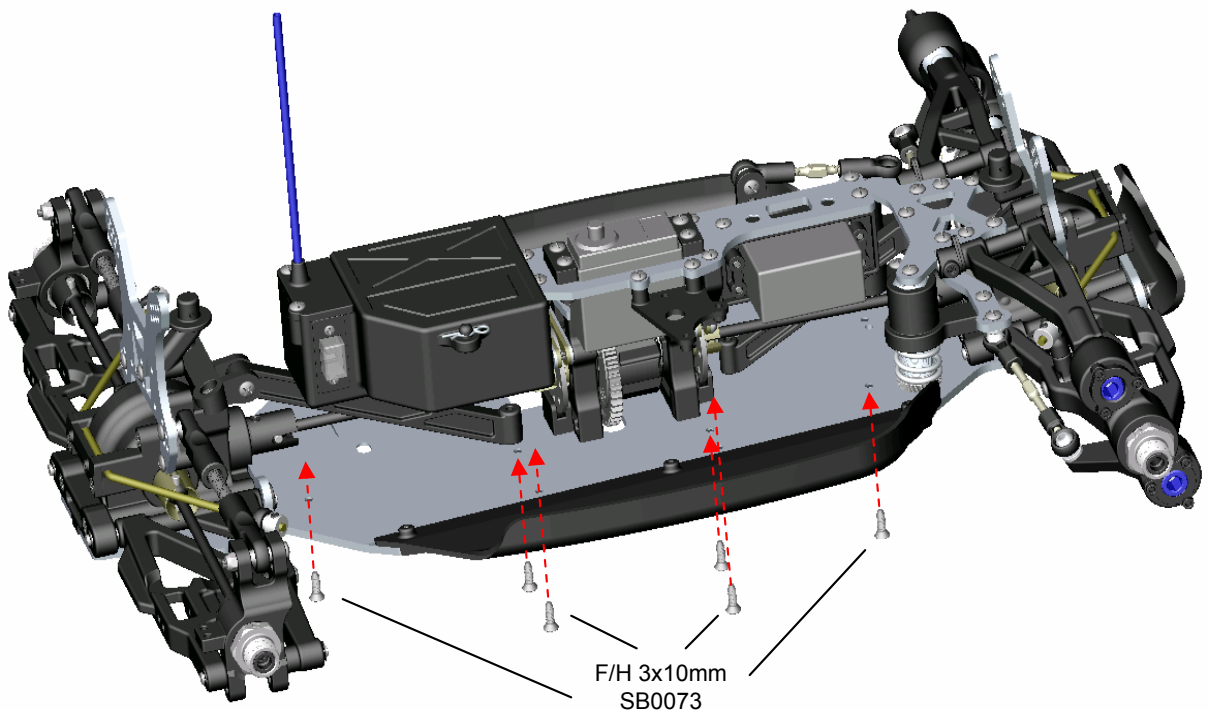
**33** Bag - K  
Receiver Box Set



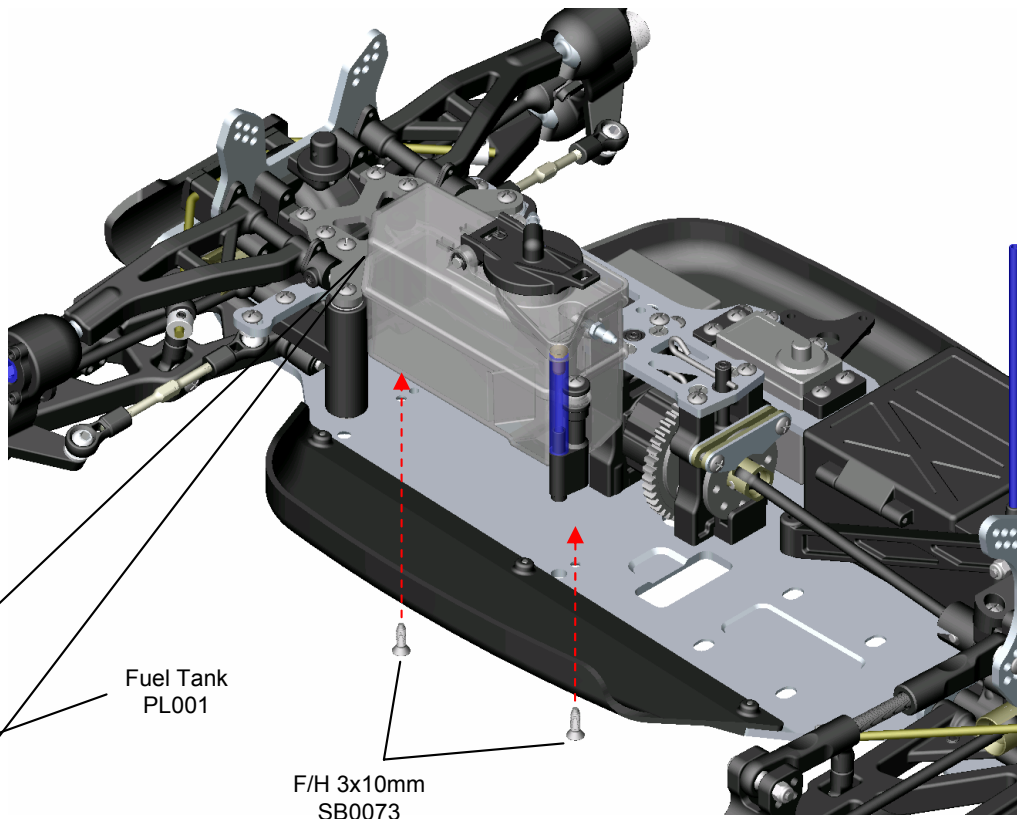
**Suggestion 1:** Put the "ON" Switch Face down.

**Suggestion 2:** Place a **Sponge** on the bottom of Receiver.

**34** Bag - K  
Radio Plate Set

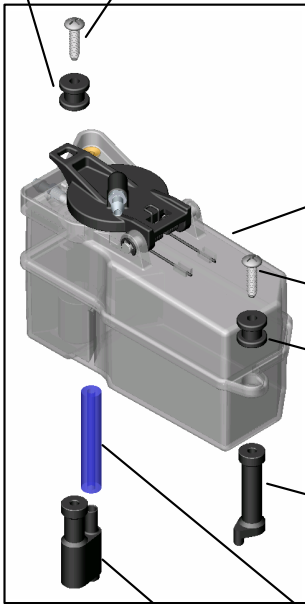


**35** Bag - L  
Fuel Tank



Fuel Tank Spacer  
RU0004

R/H 3x12mm  
SB0082



Fuel Tank  
PL001

R/H 3x12mm  
SB0082

Fuel Tank Spacer  
RU0004

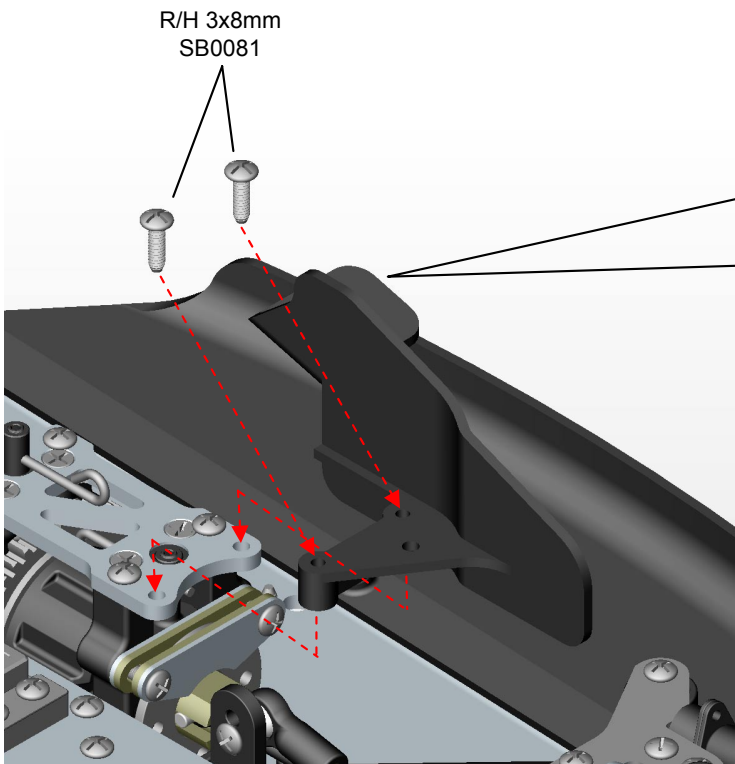
Fuel Tank Post Front  
PL0049

Fuel Tank Post Rear  
PL0054

Fuel Tank Leak Post  
CU0001

F/H 3x10mm  
SB0073

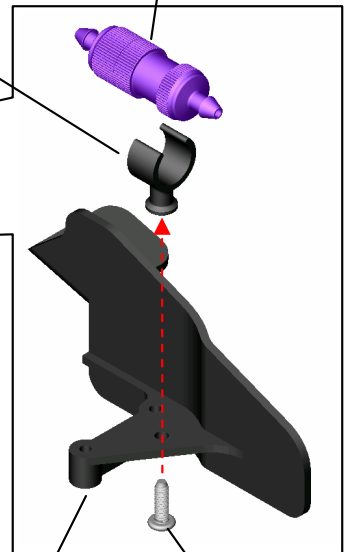
**36** Bag - L  
Fuel Guard



R/H 3x8mm  
SB0081

Fuel Filter Holder  
PL0069

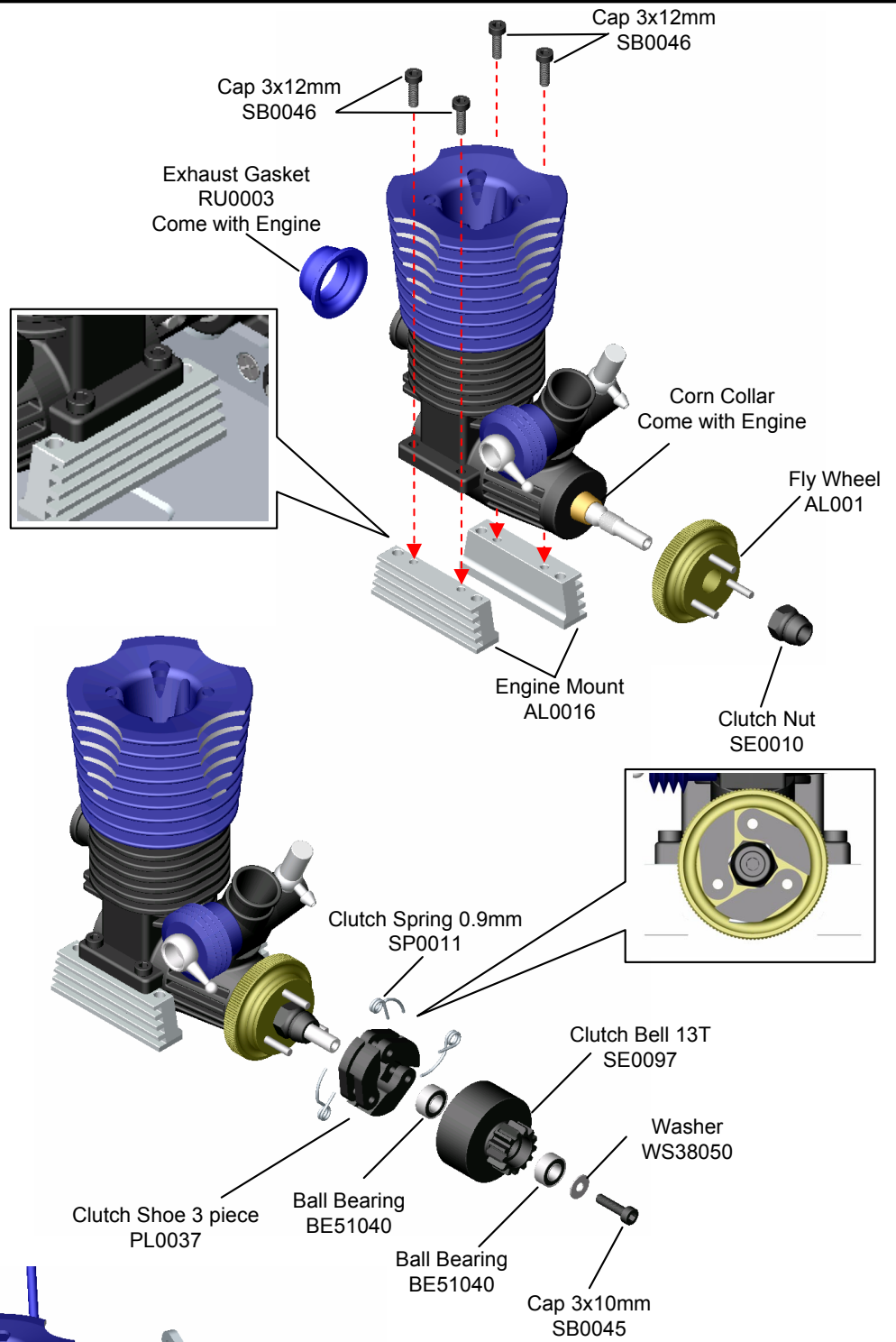
OPTION  
CR2-0009



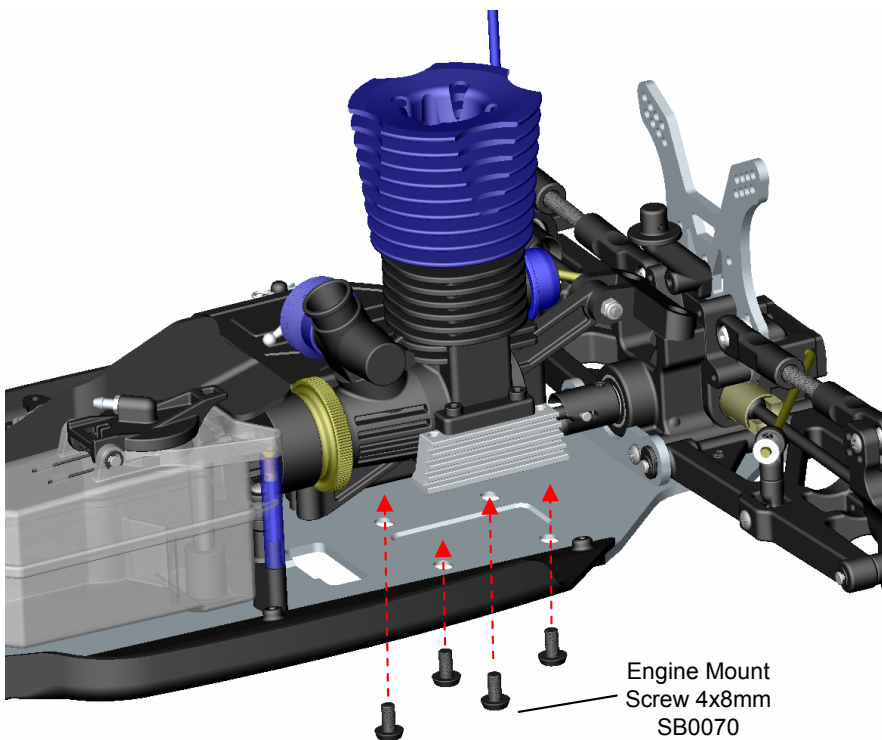
Fuel Guard  
PL0064

R/H 3x8mm  
SB0081

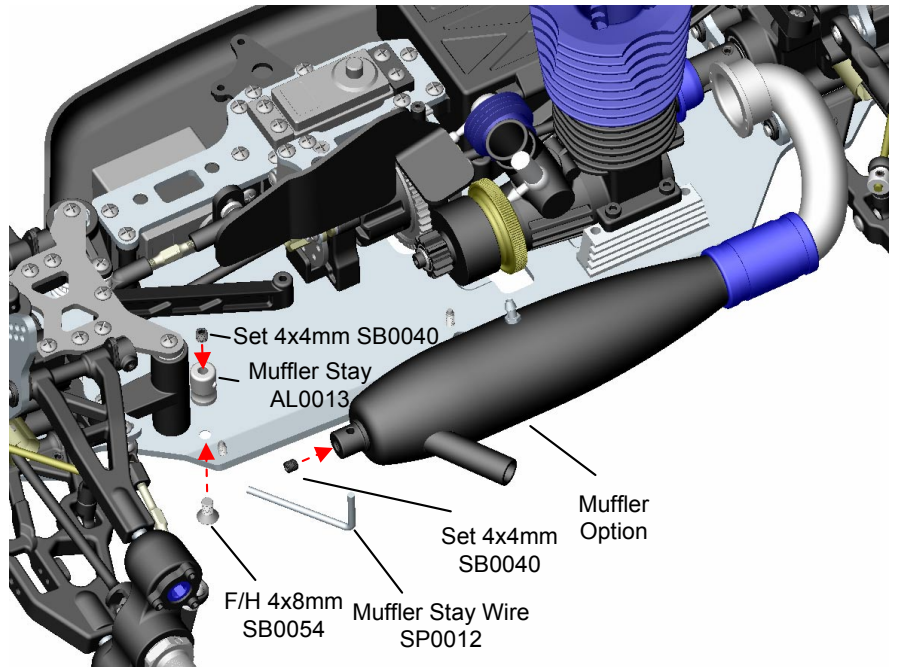
**37** Bag - M  
Clutch Set Up



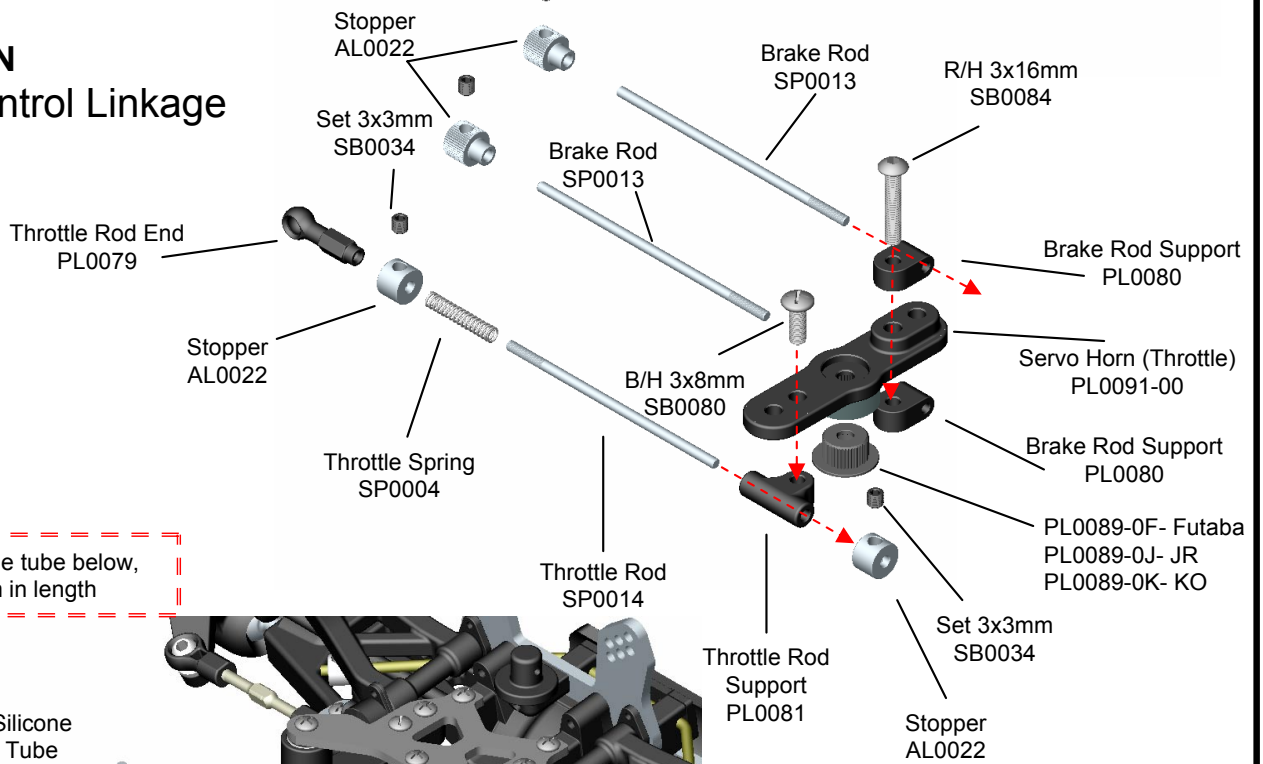
**38** Bag - M  
Engine Mount



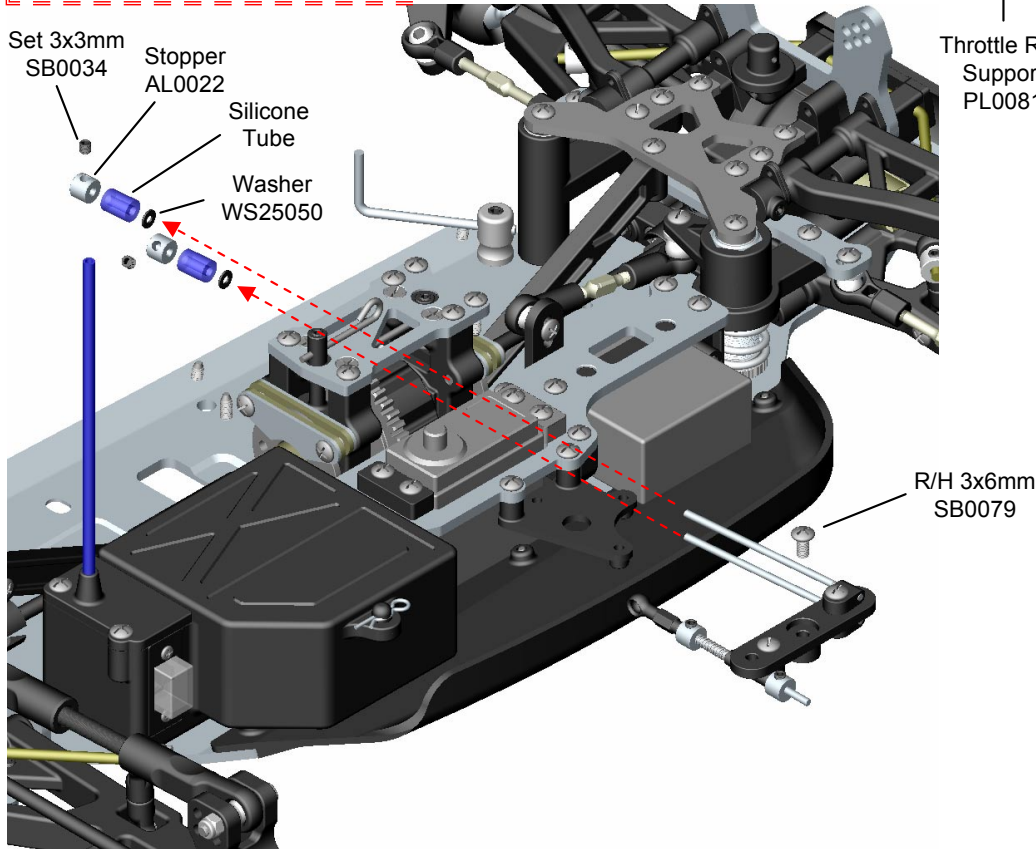
**39** Bag - N  
Muffler



**40** Bag - N  
Throttle Control Linkage



**Suggestion:** Silicone tube below, should have 6~8mm in length



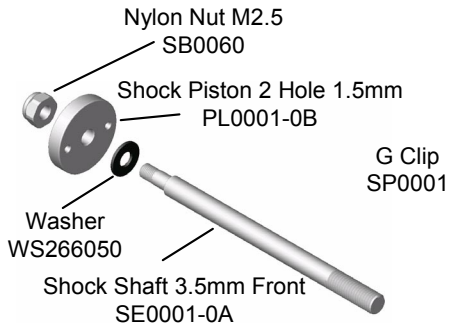
## 41 Bag - O

### Front Shock

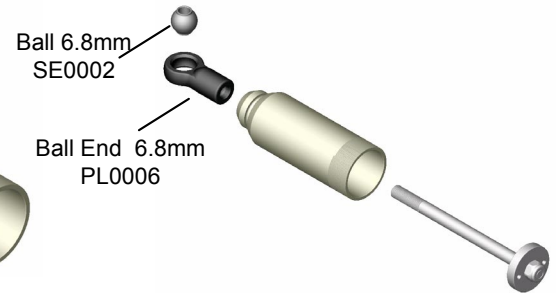
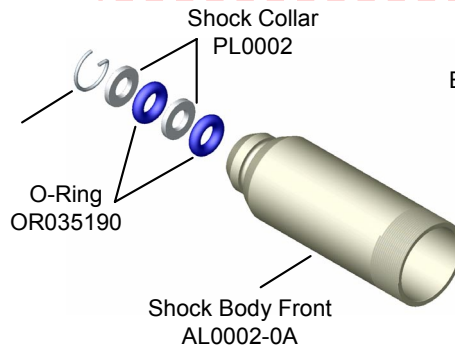
**Slide** the WS266050 washer over the stepped end of the shock shaft. Place the PL0001-0B, over the shaft and washer. Tighten the piston in place using the SB0060 lock nut. Make sure you don't over tighten the piston, it will cause damage the shape of the piston. Repeat for the 3 other shock shafts.

**Apply** a drop of Shock Oil to the O-rings(OR035190). Place the O-ring, followed by Shock Collar (PL0002), another O-ring (OR035190), follow by Shock Collar again (PL0002). Gently press the PL0002 to seat the parts in the shock body and under the small groove. Carefully place the G-Ring ( SP0001) in the shock body and snap into the groove.

**Apply** a drop of Shock Oil to the threads of the shock shaft. Gently slide the shock shaft through the shock body. Tighten the shock shaft ball end to the top of the threads. Snap the 6.8mm Ball (SE0002) into the Ball End ( PL0006).

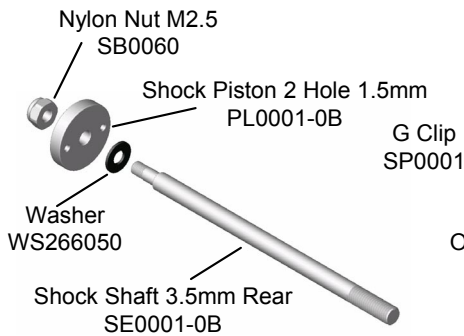


### Assemble 2 Sets

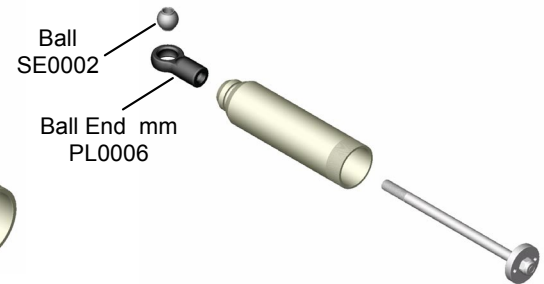
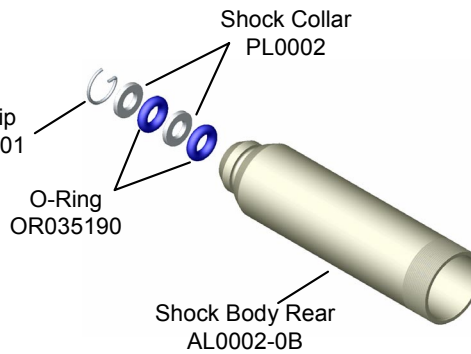


## 42 Bag - O

### Rear Shock



### Assemble 2 Sets



## 43 Bag - O

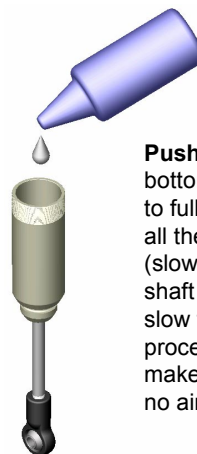
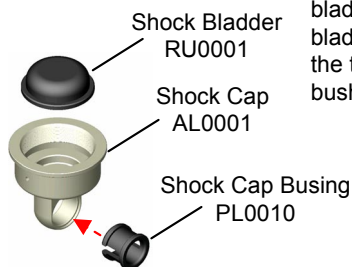
### Shock Oil Set up

### Assemble 4 Sets

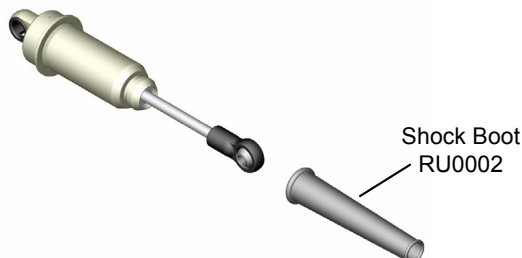
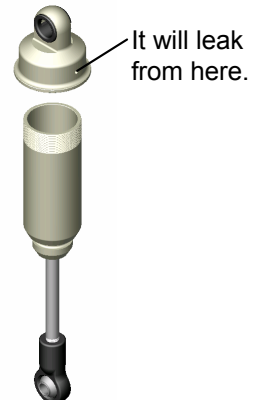
### Use Shock Oil #400

**Apply** a drop of Shock Oil to the Shock Bladder(RU0001). Spread the oil all around the bladder. Carefully seat the bladder in the shock cap, past the threads. Slide the shock cap bushing into the shock cap.

Overflow does not matter when Shock Cap

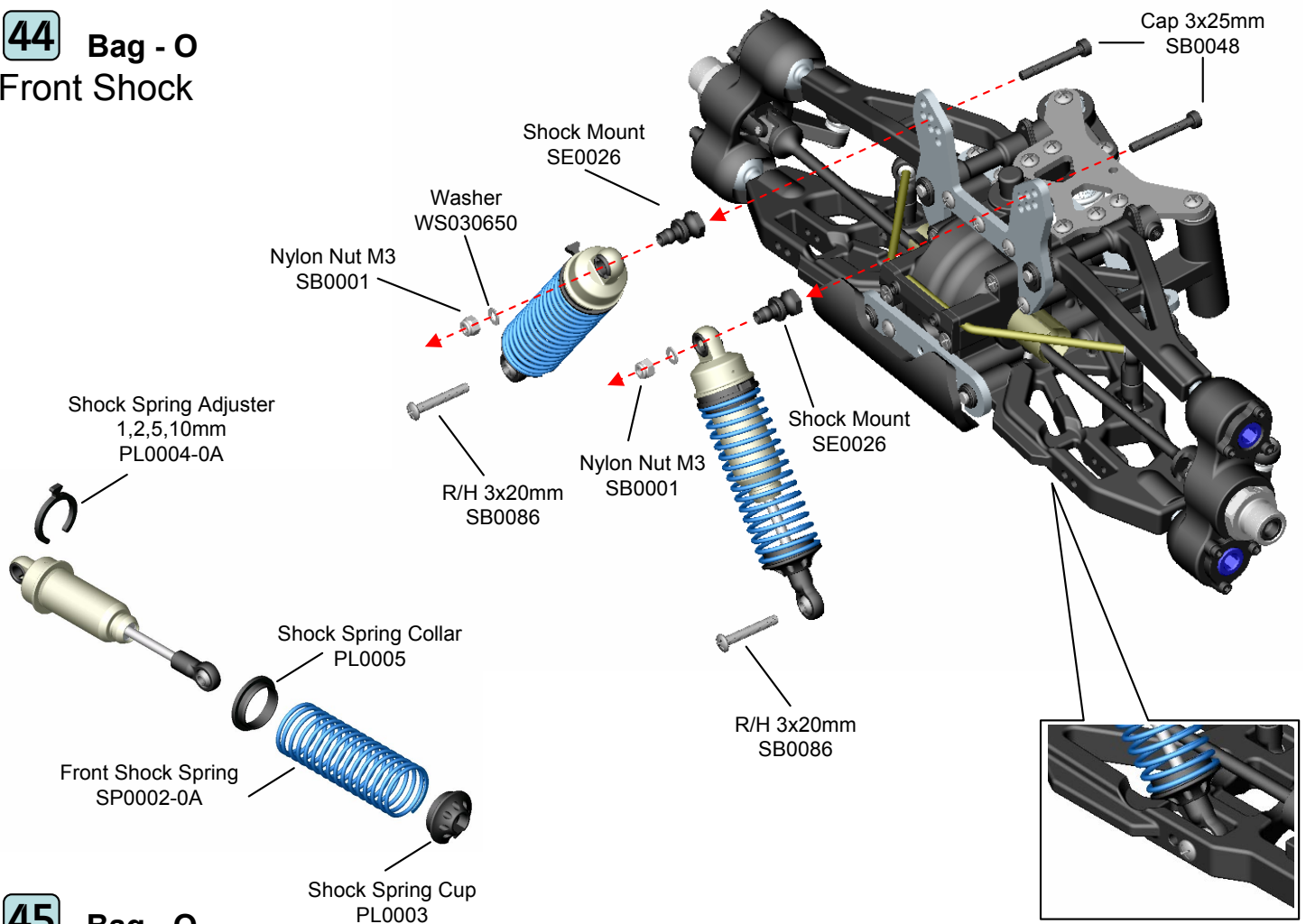


**Push** the shock shaft to the bottom, and fill the shock oil to full. Push the Shock Shaft all the way to the top, (slowly). And then pull the shaft back down very very slow to bottom. Repeat this process at least twice, to make sure that there will be no air bubbles.

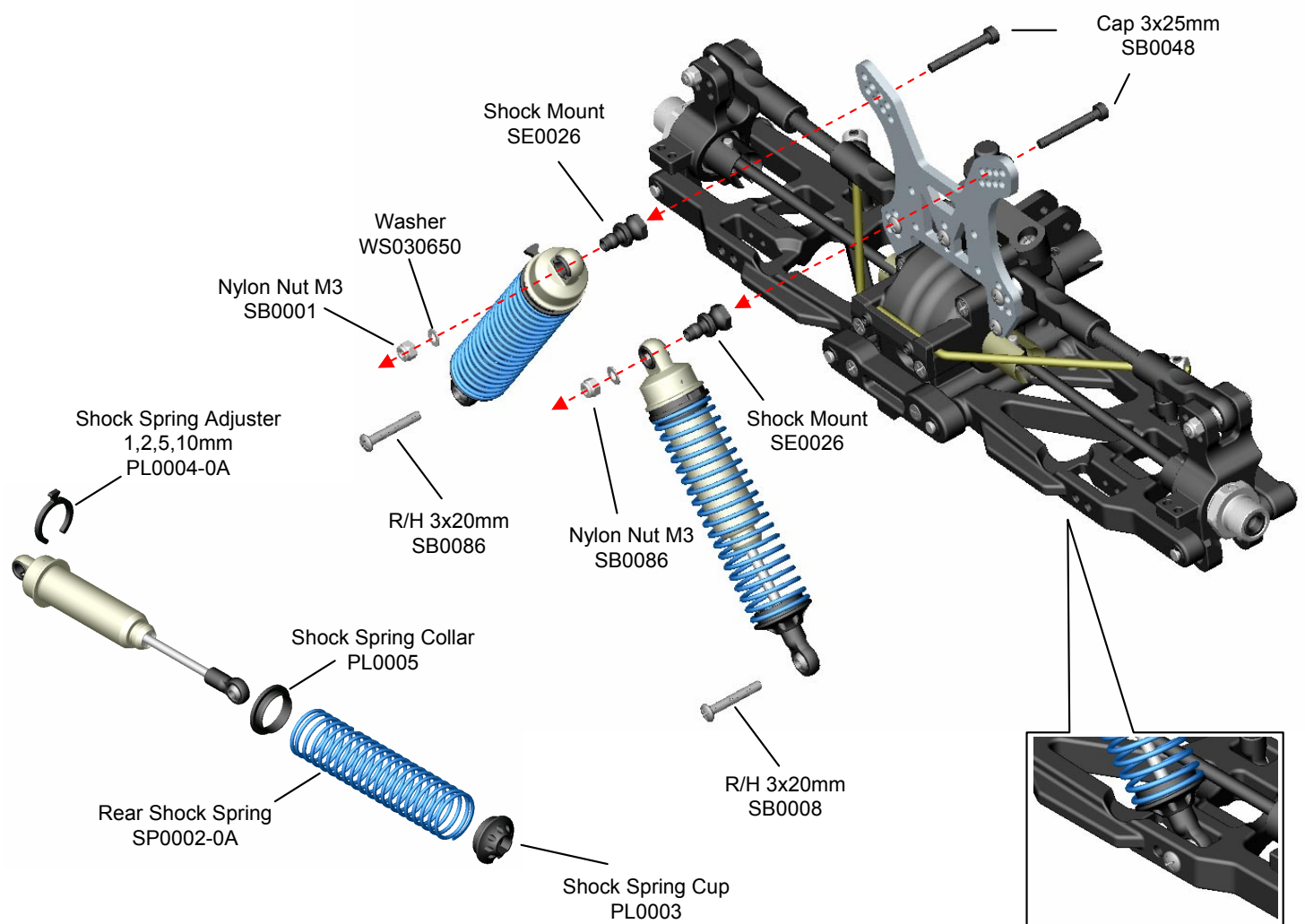


**Make** sure there isn't any bubbles in the shock. You can start to thread the Shock Cap. Make sure when you thread the cap, the Shaft is at the bottom position.

**44** Bag - O  
Front Shock



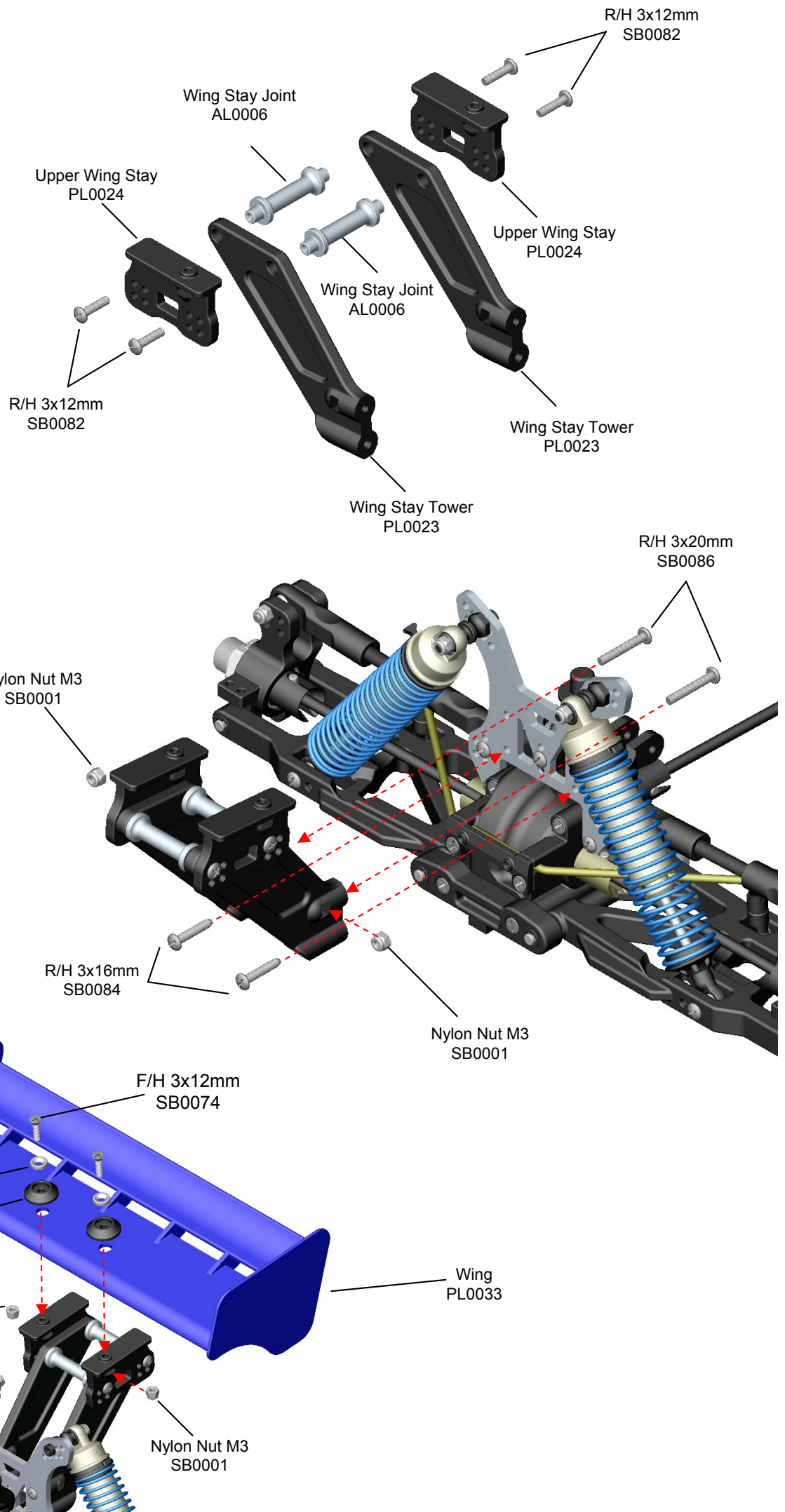
**45** Bag - O  
Rear Shock



46

Bag - P

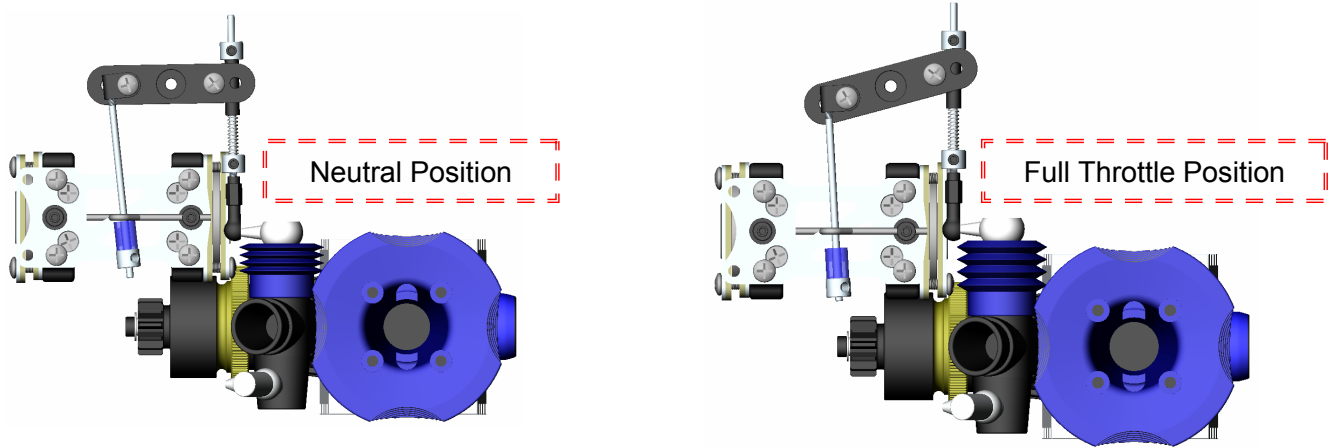
# Wing & Wing Stay



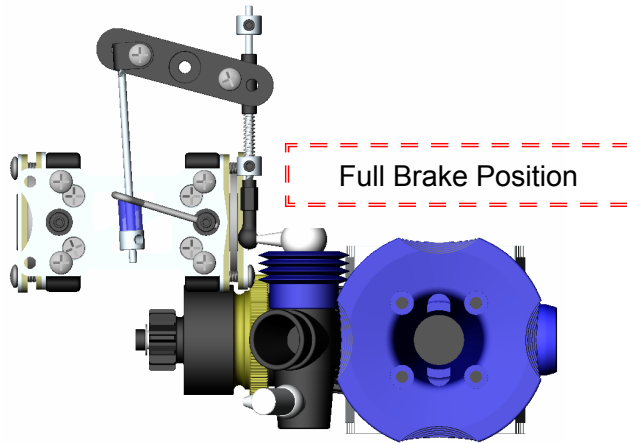


47

# Linkage Adjustment



At Neutral Position the carburetor should only open 0.8 ~ 1.1mm !!! Adjust so brake is at neutral position at full throttle !!!

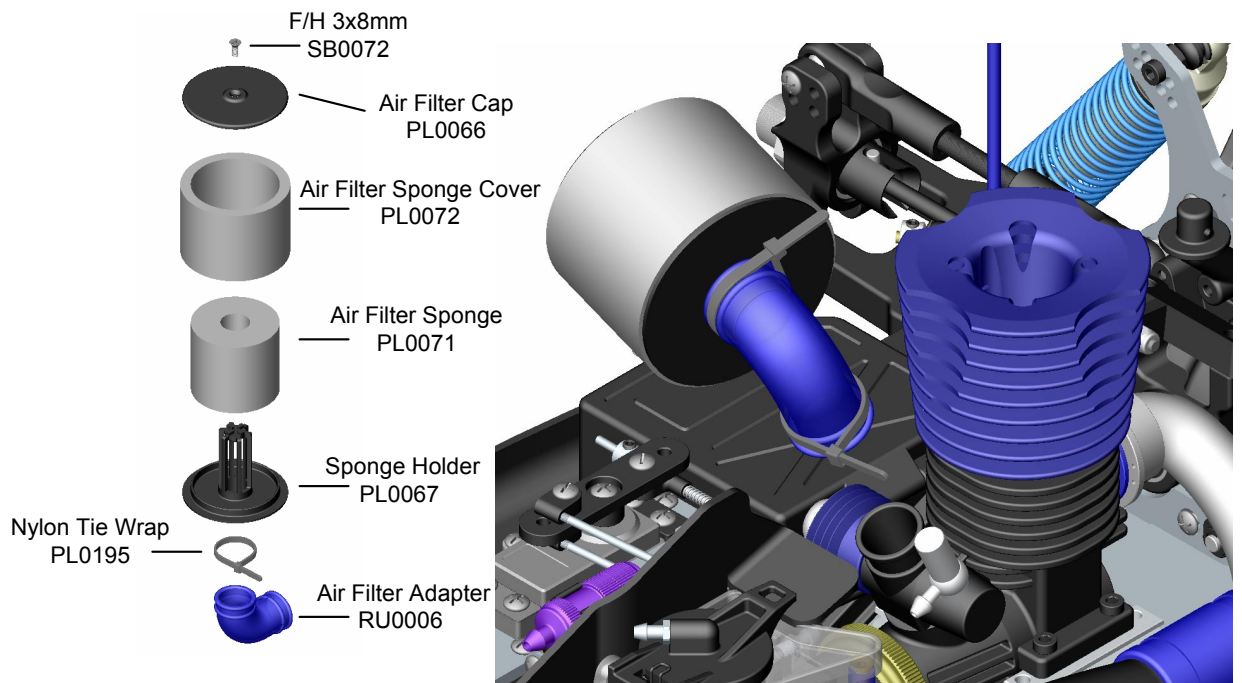


At Full brake the carburetor should only open 0.8 ~ 1.1mm !!!

Tighten or loosen adjuster knob to adjust brake action !!!

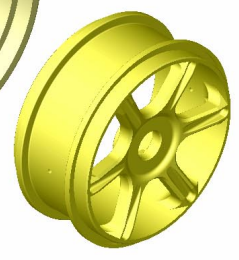
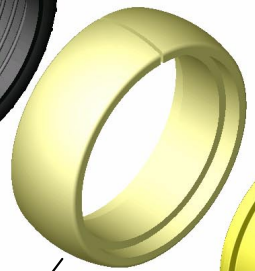
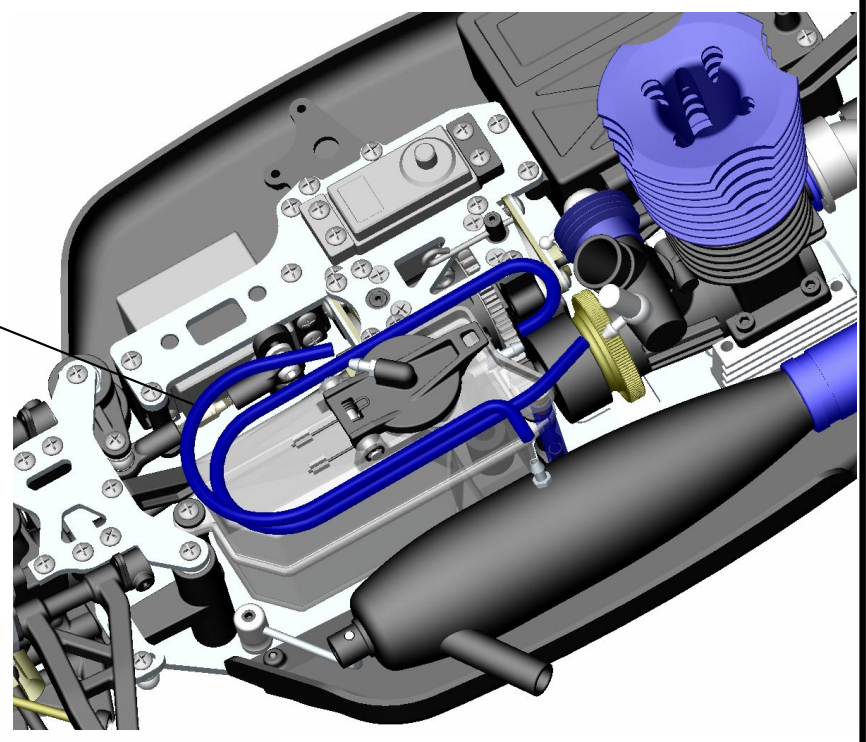
# 48 Bag - Q

## Air Filter



**49** Bag - Q  
Fuel Line / Tires

Fuel Line



Instant Glue

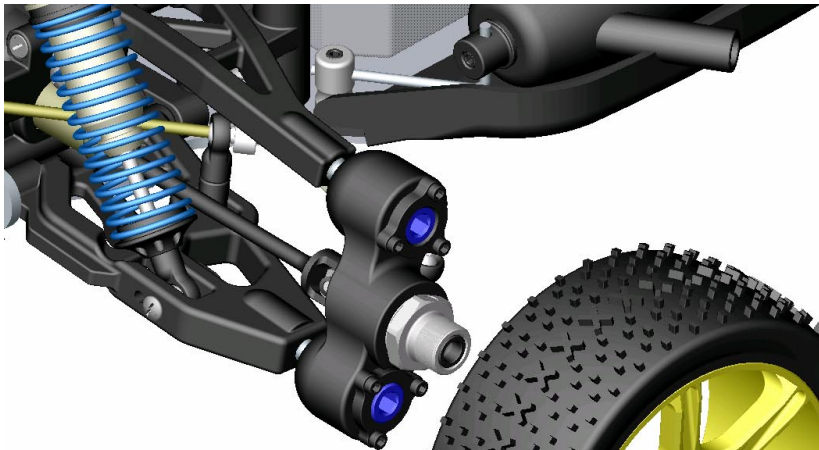


Tire  
RU0012  
Included with Pro Kit

Tire Foam Insert  
PL0200  
Included with Pro Kit

Wheel  
PL0070-YE

Apply instant glue into the groove of the wheel.

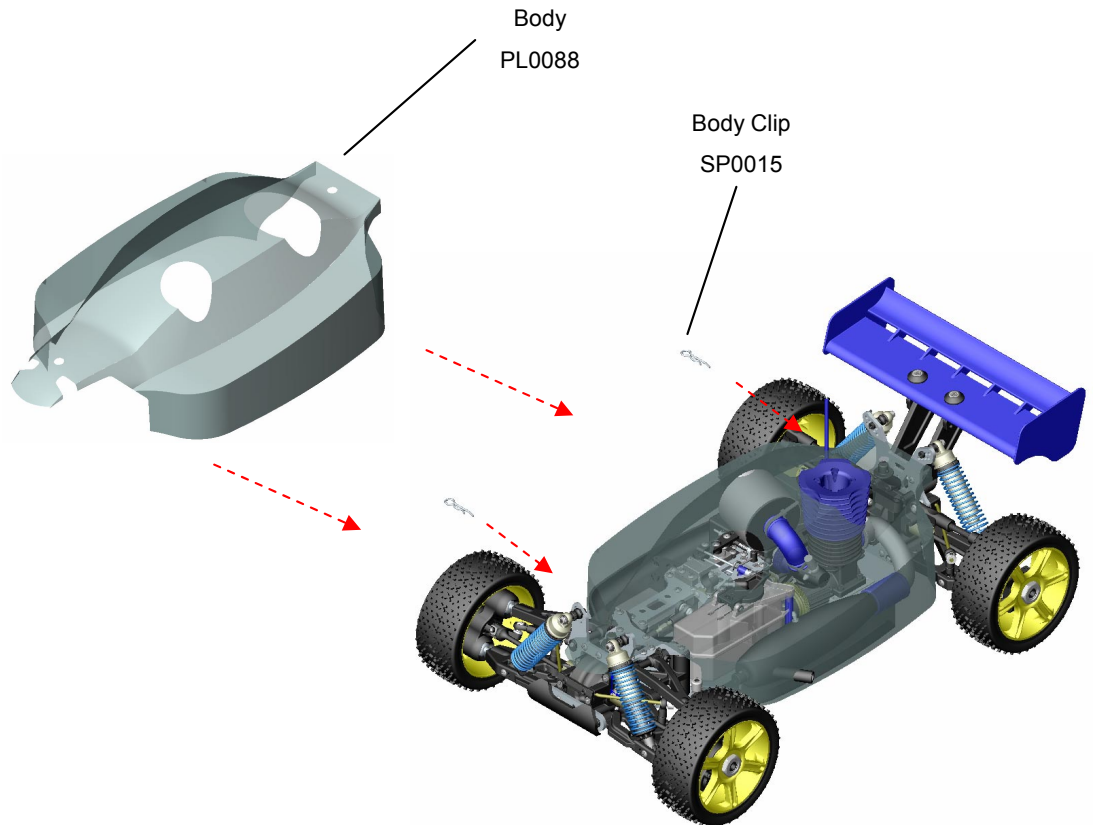


Wheel Hub Nut  
AL0004



## 50 Bag - Q

### Body



## 51

### Starting Engine

#### 1. Turn on the Radio

- A. Make sure antenna on Transmitter is pulled out and the antenna on receiver is straight. Then switch Transmitter on.
- B. Make sure the carburetor is in the neutral position when receiver is turned on.
- C. Check if the Steering moves smoothly. If not, check Batteries of Transmitter and Receiver.
- D. Check the Throttle moves smoothly. If not, check Batteries of Transmitter and Receiver.

#### 2. Starting the Engine

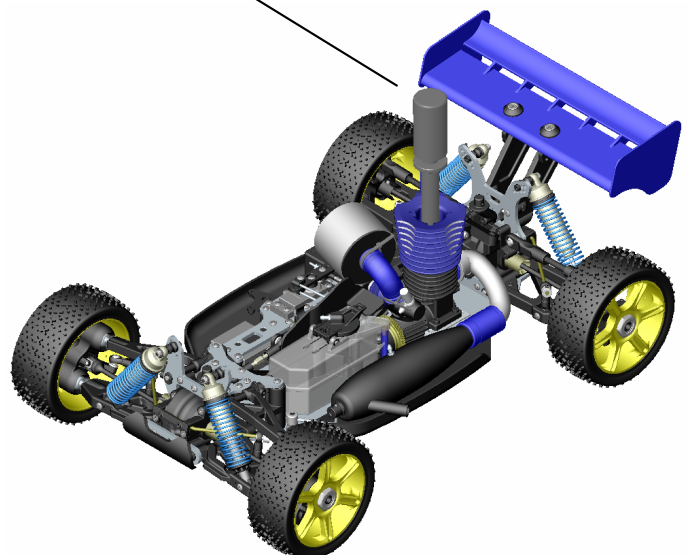
- A. Apply glow Engine fuel, prepared only for models. Fasten Tank cap tightly, after fuel filled in. Heat plug with Booster Cord or Pocket Booster.
- B. It aligns a starter's ring with the flywheel of the car, and tries to push the car into the starter, and an engine is made to start.

#### 3. Stopping the Engine

- A. Placing idling position, remove air cleaner and close off air intake opening. Or, Blocking exhausting.

**Note:** please use proper tools to stop the engine avoid using your hands to stop the engine. Because the Exhaust pipe is very hot.

Glow Starter (Option: Not Included)



## **Tips and guide for running your EX-1**

### **Glow Fuel:**

The engines used for the Caster Racing ZX-1 require glow fuel. To get the proper fuel is very important for long engine life. Improper fuel can cause starting problems, poor performance, and excessive wear on the engines. There are many brands of glow fuels; they must meet the following requirements:

1. Only use the **GLOW FUEL** for radio control models the model shop sells. Other fuel, such as the gasoline and kerosene may break engine, and there is fear of explosion and accident such as a fire.
2. Please use a popular name brand of the **GLOW FUEL**.
3. Please use the nitro (Nitro Methane) between **10%-30%**.
4. Avoid fire, direct sunlight, high temperature, near battery and store the fuel in the cool, dry and dark places out of children's reach.
5. Don't leave the fuel in the fuel pump and the fuel tank. There is danger that fuel leaks.
6. Remove the fuel cap and throw the empty fuel can away. Don't throw an empty can into the fire. There is a danger of explosion.

### **Radio System:**

In order to run your Caster ZX-1 without any loss of control. Please make sure you have checked the following requirements (without the engine running).

1. It is important that all the batteries are fresh or fully charged.
2. Always check the path and the condition of the battery pack wires as well as the switch wires. A broken wire can cause a short circuit and lead to a loss of control.
3. Turn on the transmitter, and then turn on the car receiver battery pack switch to check if the steering and throttle servos' movement.
4. Turn the steering wheel on the transmitter left and right. The front wheels should turn left and right (when viewed from behind). Use the steering trim adjustment to set the neutral (wheels pointing straight ahead) setting on your car. If your servos move very very slow, check your batteries.
5. Pull the throttle trigger, the carburetor should open on the engine. Push the throttle trigger open and forward. This will activate the brakes. Please use the throttle trim adjustment to set the neutral setting on your car. (Read the instructions that come with your radio.)
6. Hold the throttle open and roll the car on the ground. The car should roll freely. While it is still rolling, push on the brakes. The car should come to an immediate stop. If these steps do not produce these results, please refer to the linkage assembly steps in this manual.

### **Warning!!!**

1. Improper operations may cause personal and/or property damage. Caster Racing and its distributor have no control over damage resulting from shipping, improper construction, or improper usage.

## **Engine:**

For proper engine break-in procedure, please refer to the manual of your engine:

1. Never run your vehicle without the air filter. If the vehicle will be operated in an area with the fine dust, use the filter oil or castor oil instead of fuel. It is important that the foam is only moist to trap dirt and allow air passage. With the foam too wet, limited air can pass through; therefore, limiting engine performance. .
2. The parts around engine could be dangerously hot after operation. Do not touch it without any protection!

## **First Aid:**

Please read the following subject with attention:

1. If you drink nitro fuel by accident, immediately drink large quantities of water and try to induce vomiting. Consult with your Physician right after then.
2. If the nitro fuel gets into your eyes, rinse them well with water. Consult with Physician right after then.
3. If the fuel gets onto your skin, wash it well with soap and water.

## **OPERATING YOUR ENGINE RC CAR:**

The 1/8th scale engines car runs at a very fast speed, and uses expensive flammable glow fuel for the model engine. Exhaust sound becomes noise sometimes to the other people. Operate the model in the area with safety, no troublesome, no personal injury, no property damage, and no accident.

## **Checklist before Running**

1. Be sure to tight screws securely and install all parts.
2. Ensure all moving parts move without binding. Are they greased fro non-binding movement?
3. Ensure a clean oiled air filter is installed.
4. Turn on the switch of the receiver and transmitters, and make sure whether the steering servo and engine control servo linkages move without binding.
5. Check the radio batteries are fresh or enough power to operate the model.
6. Check if there is someone on the same frequency.

## **IMPORTANT !!! Do not operate the Car under those situation !!!**

1. Near Children
2. Early morning and late night.
3. Near the railroad track, school, residential area, road, air port, and hospital or any indoors.
4. When the battery of transmitter and receiver are weak.
5. When the model car behave strangely. (when someone is operated on the same frequency)

## **Start to operate**

1. Make sure the batteries are fresh.
2. Place the RC car on the starter box and float the tires from the ground.
3. Turn on the switch of the transmitter and receiver.
4. Make sure the steering servo and engine control servo work normally and adjust them correctly.
5. Fill up the fuel in the fuel tank, and make sure the cap is securely close.
6. Apply the Glow starter to the glow plug.
7. Press the back of the RC car on the starter box and start the engine. ( if the engine is new, follow the instruction manual provided by the Engine manufacture. If not, engine will break suddenly by the high rotation.)

## **Finish to operate**

1. Stop the engine by use up the fuel in the tank or you can stop the engine by stop the flywheel which is locate from the bottom of the chassis. You can stop by the sole of shoe.
2. Turn off the receiver and transmitter switch.

## **Maintenance**

1. Before storing your car away, draw out any fuel from the fuel tank and clean up the oil in the muffler.
2. Wipe off dirt and oil.
3. Apply after-run oil to the engine and grease all moving parts.

## **Trouble Shooting**



## CASTER RACING ZX-1KIT SPARE PARTS LIST

PART #	DESCRIPTION	
ZX-0001-R	ZX-1 RTR Buggy w Radio&Engine	
ZX-0002	Zx-1 Buggy Body (Clear)	
ZX-0002-p	ZX Buggy Body (Pre-Paint)	
ZX-0003	Zx-1 Caster Sticker Sheet	
ZX-0004	Front Shock Set	
ZX-0005	Rear Shock Set	
ZX-0006	Front Shock Body	
ZX-0007	Rear Shock Body	
ZX-0008	Shock Rebuilt Kit	
ZX-0009	Front Shock Shaft	
ZX-0010	Rear Shock Shaft	
ZX-0011	Shock Piston 2-hole 1.5mm	
ZX-0012	Shock Piston 1-hole 2mm	
ZX-0013	Shock Bladders	
ZX-0014	Shock Cap Bushing	
ZX-0015	Shock Shaft Ball End	
ZX-0016	Shock Spring Adjuster Set	
ZX-0017	Shock Spring Cup Set ( Up & Down)	
ZX-0018	Shock Boots	
ZX-0019-5W	Shock Spring -Front White 1.5mm	
ZX-0019-6R	Shock Spring-Front Red 1.6mm	
ZX-0019-7B	Shock Spring-Front Blue 1.7mm	
ZX-0020-5W	Shock Spring-Rear White 1.5mm	
ZX-0020-6R	Shock Spring-Rear Red 1.6mm	
ZX-0020-7B	Shock Spring-Rear Blue 1.7mm	
ZX-0021-OF	Front Lower Suspension Arm	
ZX-0021-OR	Rear Lower Suspension Arm	
ZX-0022	Front Upper Suspension Arm	
ZX-0023	Gear Case	
ZX-0024	Center Diff. Mount Set	
ZX-0025	Front Steering Set Left & Right	
ZX-0026	Rear Hub Set	
ZX-0027	Radio Box Set	
ZX-0028	Side Guards	
ZX-0029	Front Bumper	
ZX-0030	Differential Case	
ZX-0031	Fuel Tank	
ZX-0032	Center Air Guide Plate	

PART #	DESCRIPTION	
ZX-0033	Chassis Brace Set (Front & Rear)	
ZX-0034	Wing Stay Set	
ZX-0034-BL	Wing Blue	
ZX-0034-WH	Wing White	
ZX-0034-YE	Wing Yellow	
ZX-0034-GR	Wing Green	
ZX-0034-OR	Wing Orange	
ZX-0035	Front Upper Sus. Hinge Pin Holder	
ZX-0036	Front Steering Pivot Ball Busing	
ZX-0037	Fuel Tank Post Set	
ZX-0038	Front & Rear Body Mount	
ZX-0039	Steering Servo Mount	
ZX-0040	Front & Rear Toe-In Set 1,2,3 degree	
ZX-0041	Front /Rear Toe-In Adjuster	
ZX-0042	Rear Upper Arm-Ball End 5 mm	
ZX-0043	Sway Bar Mount-Ball End 3mm	
ZX-0044	Front Universal Drive	
ZX-0045	Front Center & Rear Drive Shaft	
ZX-0046	Rear Drive Shaft	
ZX-0047	Diff. Out drive	
ZX-0048	Center Diff. Out Drive (Flat Face)	
ZX-0049	Drive Joint	
ZX-0050	Rear Wheel Axle	
ZX-0051	Brake Pad	
ZX-0052	Brake Discs	
ZX-0053	14mm Steering Pivot Ball	
ZX-0054	Steering Servo Saver Post	
ZX-0055	Servo Saver Full Set	
ZX-0056	Shock Bushing	
ZX-0057	Front Rear Brake Cam	
ZX-0058	Rear Upper Suspension Turnbuckle	
ZX-0059	44T Steel Spur Gear	
ZX-0060	39T Diff. Gear	
ZX-0061	12T Pinion Gear	
ZX-0062	18T Diff. Bevel Gear	
ZX-0063	10 Diff. Bevel Gear	
ZX-0064	Front Lower Suspension Hinge Pin	
ZX-0065	Front Upper Suspension Hinge Pin	







## CASTER RACING ZX-1 KIT PARTS NAME LIST

PART #	DESCRIPTION	NOTE
AL001	Fly Wheel	
AL0001	Shock Cap	
AL0002-0A	Shock Body Front	
AL0002-0B	Shock Body Rear	
AL0003	Wheel Hub	
AL0004	Wheel Hub Nut	
AL0005	Servo Saver Pie	
AL0006	Wing Stay Joint (AL)	
AL0007	Rear Shock Tower	
AL0008	Front Suspension Hinge Pin Holder	
AL0009	Rear Suspension Hinge Pin Holder	
AL0010	Servo Saver Spring Cap	
AL0011	Cap Holder Bushing	
AL0012	Main Chassis	
AL0013	Muffler Stay	
AL0014	Front Shock Tower	
AL0015	Steering Plate 6061T	
AL0016	Engine Mount	
AL0022	AL Stopper	
AL0023	Front Upper Suspension Plate	
AL0024	Washer	
AL0025	Center Diff. Support Plate	
AL0031	Radio Plate	
PL001	Fuel Tank	
PL0001-0B	Shock Piston 2 Hole	
PL0002	Shock Collar	
PL0003	Shock Spring Cup	
PL0004-0A	Shock Spring Adjuster 1, 2, 5, 10mm	
PL0005	Shock Spring Collar	
PL0006	Ball End 6.8mm (Shock)	
PL0007	Brake Pad	
PL0008	Diff. Case	
PL0009	Diff. Gasket	
PL0010	Shock Cap Bushing	
PL0011	Front Body Mount	
PL0012	Rear Body Mount	
PL0013	Servo Saver Arm - Bottom	
PL0014	Servo Saver Arm - Top	

PART #	DESCRIPTION	NOTE
PL0015	Servo Saver Arm - Left	
PL0016	Servo Saver Spring Bushing	
PL0017	Center Diff. Mount - Bottom	
PL0018	Center Diff. Mount - Top	
PL0019	Brake Disc Holder	
PL0020	Radio Plate Stand	
PL0021-0B	Front Upper Suspension Arm - R	
PL0021-0A	Front Upper Suspension Arm - L	
PL0022	Brake Cam Bushing	
PL0023	Wing Stay Tower	
PL0024	Upper Wing Stay	
PL0025	Rear Toe In	
PL0026	Rear Hub - R	
PL0027	Rear Hub - L	
PL0028	Front Lower Suspension Arm - R	
PL0028	Front Lower Suspension Arm - L	
PL0029	Pivot Ball Cup	
PL0030	Steering Knuckle - L	
PL0031	Steering Knuckle - R	
PL0032	Rear Lower Suspension Arm - R	
PL0032	Rear Lower Suspension Arm - L	
PL0033	Wing	
PL0034	Wing Stay Spacer	
PL0035	Front Upper Sus. Hinge Pin Holder -L	
PL0036	Front Upper Sus. Hinge Pin Holder -R	
PL0037	Clutch Shoe - 3 Piece	
PL0041	Sway Bar Plate	
PL0042-0A	Front/Rear Toe-in Adjuster	
PL0043	Radio Plate Post	
PL0044	Servo Mount	
PL0045	Bulkhead - R	
PL0046	Bulkhead - F	
PL0047-00R	Side Guard Right	
PL0048-00L	Side Guard Left	
PL0049	Fuel Tank Post - Front	
PL0050	Rear Chassis Brace Holder	
PL0052	Front Lower Toe-in Adjuster	
PL0053-0A	Front Toe In	



## CASTER RACING ZX-1 KIT PARTS NAME LIST

PART #	DESCRIPTION	
PL0054	Fuel Tank Post - Rear	
PL0055-0A	Front Upper Arm Spacer	
PL0056	Torque Rod - Rear	
PL0057	Torque Rod - Front	
PL0058	Transponder Mount	
PL0059	Pivot Ball Cup Holder	
PL0060	Ball End 6 mm (Sway Bar)	
PL0061	Ball End 7 mm (Steering Servo)	
PL0062	Ball End 7 mm (Steering Rod)	
PL0063	Servo Holder	
PL0064	Fuel Proov Plate	
PL0065	Ball End mm (Rear Upper Arm)	
PL0066	Air Filter Cap	
PL0067	Sponge Holder	
PL0069	Fuel Filter Holder	
PL0070-WH	Wheel	
PL0071	Air Filter Sponge	
PL0072	Air Filter Sponge Cover	
PL0074	Radio Box	
PL0075	Switch Cover Plate	
PL0076	Radio Box Cover	
PL0077	Plastic Spacer - Rear Hub	
PL0078-0A	Switch Holder	
PL0079	Throttle Rod End	
PL0080	Brake Rod Support	
PL0081	Throttle Rod Support	
PL0086-0A	Servo Mount Spacer	
PL0087	Antenna Tube	
PL0088	Body (Clear)	
PL0090	Servo Horn (Steering)	
PL0091-0F	Servo Horn (Throttle) (PL0091-0K)-KO	
PL0195	Nylon Tie Wrap	
PL0200	Tire	
SE001	Front Universal Drive Joint	
SE002	Rear Drive Shaft	
SE003	Front Center Drive Shaft	
SE004	Rear Center Drive Shaft	
SE0001-0A	Shock Shaft 3.5 mm Front	

PART #	DESCRIPTION	
SE0001-0B	Shock Shaft 3.5 mm Rear	
SE0002	Ball 6.8 mm	
SE0003	Ball 7 mm	
SE0004	Stabilizer Ball	
SE0005	Brake Disc - Steel	
SE0006	Brake Pad Holder	
SE0007	Brake Cam Level	
SE0008	Brake Cam - Front	
SE0009	Brake Cam - Rear	
SE0010	Clutch Nut	
SE0021	Servo Saver Shaft	
SE0020-0A	Front/Rear Spear Gear 39 T	
SE0022	Pivot Ball (Steering) 14 mm	
SE0023	Rear Lower Suspension Hinge Pin Short	
SE0024	Center Diff. Out Drive (flat Surface)	
SE0025	Front/Rear Diff. Out Drive	
SE0026	Shock Mount	
SE0029	Servo Saver Arm Bushing	
SE0030-0F	Turnbuckle 3x50 mm	
SE0030-0B	Turnbuckle 3x30 mm	
SE0031	Ball 7 mm	
SE0032	Front Lower Suspension Hinge Pin	
SE0033	Front Upper Suspension Hinge Pin	
SE0034	Diff. Bevel Gear Small 10 T	
SE0035	Bevel Shaft	
SE0036	Diff. Bevel Gear - Large 18 T	
SE0038	Steel Center Diff. Gear 44 T	
SE0080	Pinion Gear - Small 12 T	
SE0081	Drive Joint	
SE0082	E-Clip 3mm	
SE0083	Rear Wheel Axle	
SE0084	Ball 6 mm	
SE0085	Front Sway Bar 2.3 mm	
SE0086	Rear Sway Bar 2.8 mm	
SE0097	Clutch Bell 13 T	
SP0001	G-Clip	
SP0002-0A	Front Shock Spring	
SP0003-0A	Rear Shock Spring	



## CASTER RACING ZX-1 KIT PARTS NAME LIST

PART #	DESCRIPTION	
SP0004	Throttle Spring	
SP0005	Spring	
SP0009	Clip	
SP0011	Clutch Spring	
SP0012	Muffler Stay Wire	
SP0013	Brake Rod	
SP0014	Throttle Rod	
SP0015	Body Clip	
RU0001	Shock Bladder	
RU0002	Shock Boots	
RU0003	Exhaust Gasket	
RU0006	Air Filter Adapter	
RU0007	Silicone Switch Cover	
RU0012	Tire	
BE81605	Ball Bearing 8x16x5mm	
BE61030	Ball Bearing 6x10x3mm	
BE51040	Ball Bearing 5x10x4mm	
OR050150	O-Ring	
OR030150	O-Ring	
OR120100	O-Ring	
WS516010	Washer	
WS3612020	Washer	
WS25050	Washer	
WS38050	Washer	
WS266050	Washer	
WS81002	Washer	
WS131601(02)	Washer	
PI020098	Pin	
PI030168	Pin	
SB0001	Nylon Nut M3	
SB0002	Nylon Nut M2.6	
SB0005	3x10mm BH Screw	
SB0006	3x12mm BH Screw	
SB0011	3x8mm FH Screw	
SB0013	3x12mm FH Screw	
SB0014	3x15mm FH Screw	
SB0019	3x6mm FH/ST Screw	
SB0021	3x10mm FH/ST Screw	

PART #	DESCRIPTION	
SB0025	3x25mm FH/ST Screw	
SB0026	3x30mm FH/ST Screw	
SB0027	3x35mm FH/ST Screw	
SB0028	3x40mm FH/ST Screw	
SB0029	3x8mm RH/ST Screw	
SB0034	3x3mm Set Screw	
SB0035	3x5mm Set Screw	
SB0036	3x12mm Set Screw	
SB0039	2.6x10mm Cap Screw	
SB0040	4x4mm Set Screw	
SB0041	4x8mm Set Screw	
SB0042	5x5mm Set Screw	
SB0043	5x35mm Set Screw	
SB0044	5x45mm Set Screw	
SB0045	3x10mm Cap Screw	
SB0046	3x12mm Cap Screw	
SB0048	3x25mm Cap Screw	
SB0050	4x8mm F/H Screw	
SB0052	4x12mm FH/ST Screw	
SB0055	4x10mm F/H Screw	
SB0056	4x16mm F/H Screw	
SB0060	Nylon Nut M2.5	
SB0065	2x8mm BH Screw	
SB0070	4x8mm Engine Mount Screw	
SB0072	3x8mm F/H Screw	
SB0073	3x10mm F/H Screw	
SB0074	3x12mm F/H Screw	
SB0075	3x16mm F/H Screw	
SB0076	3x20mm F/H Screw	
SB0079	3x6mm R/H Screw	
SB0080	3x8mm R/H Screw	
SB0081	3x10mm R/H Screw	
SB0082	3x12mm R/H Screw	
SB0084	3x16mm R/H Screw	
SB0086	3x20mm R/H Screw	
SB0087	3x23mm R/H Screw	
SB0088	3x28mm R/H Screw	
CU0001	Fuel Tank Leak Post	