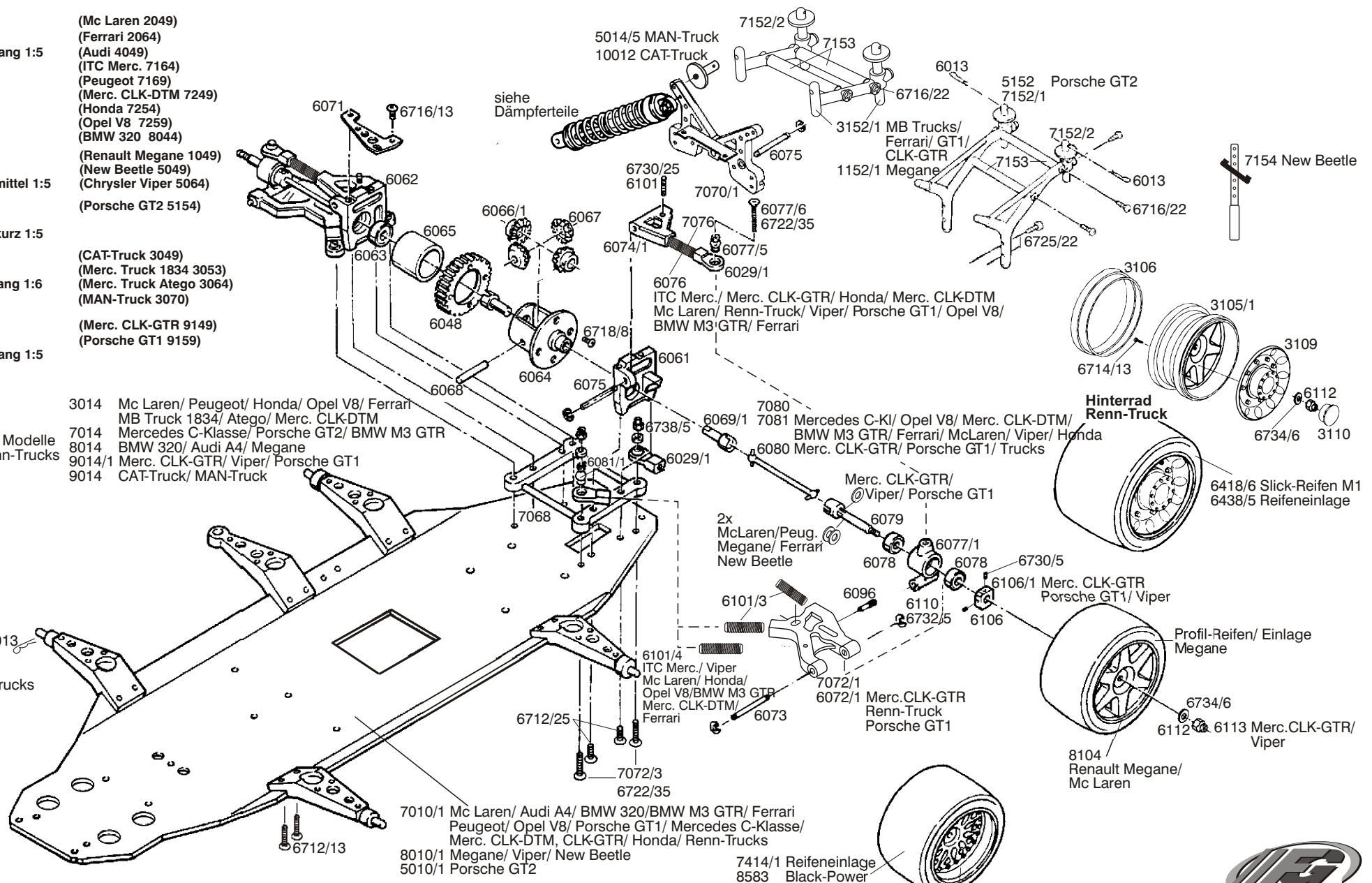
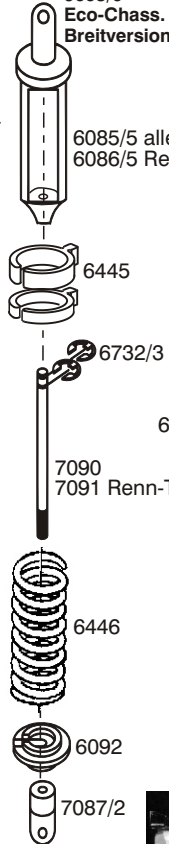


Eco-Line

- 1001 (Mc Laren 2049)
1001/0 (Ferrari 2064)
Eco-Chass. lang 1:5
(Audi 4049)
(ITC Merc. 7164)
(Peugeot 7169)
(Merc. CLK-DTM 7249)
(Honda 7254)
(Opel V8 7259)
(BMW 320 8044)
- 1002 (Renault Megane 1049)
1002/0 (New Beetle 5049)
Eco-Chass. mittel 1:5
(Chrysler Viper 5064)
- 1003 (Porsche GT2 5154)
1003/0
Eco-Chass. kurz 1:5
- 3003 (CAT-Truck 3049)
3003/0 (Merc. Truck 1834 3053)
Eco-Chass. lang 1:6
(Merc. Truck Atego 3064)
(MAN-Truck 3070)
- 9003 (Merc. CLK-GTR 9149)
9003/0 (Porsche GT1 9159)
Eco-Chass. lang 1:5
Breitversion
- 6085/5 alle Modelle
6086/5 Renn-Trucks
- 3014 Mc Laren/ Peugeot/ Honda/ Opel V8/ Ferrari
MB Truck 1834/ Atego/ Merc. CLK-DTM
7014 Mercedes C-Klasse/ Porsche GT2/ BMW M3 GTR
8014 BMW 320/ Audi A4/ Megane
9014/1 Merc. CLK-GTR/ Viper/ Porsche GT1
9014 CAT-Truck/ MAN-Truck



Karosserieteile
siehe Ersatzteilliste
od. Hauptkatalog 2

Komplette Schraubenliste
siehe Hauptkatalog 2, Seite 190.
The complete list of screws you can find in the main catalog 2, page 190.

- 7414/1 Reifeneinlage
- 8583 Black-Power
- C Slicks Einlagen
- 7105 New Beetle
- 7106 Merc. CLK-DTM/ Opel V8/ Merc. CLK-GTR/ BMW M3 GTR/ Ferrari
- 8108/1 Porsche GT2
- 8106 BMW 320/ Viper/ Honda
- 8108 Audi A4/ Merc. C-Klasse/ Peugeot/ Porsche GT1



Original FG Ersatz-und Tuningteile Original FG Ersatz-und Tuningteile Original FG

- 1001 (Mc Laren 2049)
- 1001/0 (Ferrari 2064)
- Eco-Chass. lang 1:5 (Audi 4049)
- (ITC Merc. 7164)
- (Peugeot 7169)
- (Merc. CLK-DTM 7249)
- (Honda 7254)
- (Opel V8 7259)
- (BMW 320 8044)

- 1002 (Renault Megane 1049)
- 1002/0 (New Beetle 5049)
- Eco-Chass. mittel 1:5 (Chrysler Viper 5064)

- 1003 (Porsche GT2 5154)
- 1003/0
- Eco-Chass. kurz 1:5

- 3003 (CAT-Truck 3049)
- 3003/0 (MB. Truck 1834 3053)
- Eco-Chass. lang 1:6 (MB. Truck Atego 3064)
- (MAN-Truck 3070)

- 9003 (Merc. CLK-GTR 9149)
- 9003/0 (Porsche GT1 9159)
- Eco-Chass. lang 1:5
- Breitversion

7356/8 Luftfilter/ Zenoah G230RC

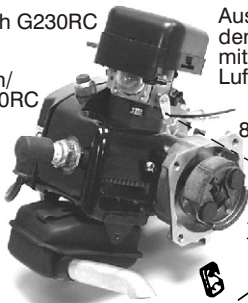
Auslieferung kann entsprechend dem Modell oder Lieferfähigkeit mit Standard-Luftfilter bzw. Flach-Luftfilter erfolgen

8356 Luftfilter/ Solo

Auslieferung kann entsprechend dem Modell oder Lieferfähigkeit mit Standard-Luftfilter bzw. Flach-Luftfilter erfolgen



9043 Luftfilter flach/ Zenoah G230RC



7300/8 FG Zenoah-Motor G230RC



8300 Solo Sport-Motor 108 FG



8360 Luftfilter flach/ Solo

7390 Megane/ New Beetle
Merc. CLK-DTM/
Opel V8/BMW M3 GTR
7391 alle Modelle

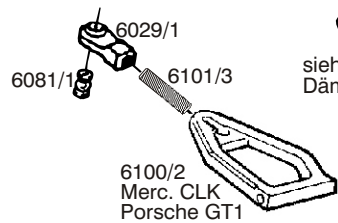
5014/6 Megane/Mc Laren/
Audi/ BMW 320/
New Beetle/ Porsche GT2/ Ferrari
Merc. C-Klas./ Merc. CLK/
Peugeot/ Viper/ Porsche GT1
5014/7 Renn-Trucks/Opel V8/
Merc. CLK-DTM/
BMW M3 GTR

5017 Porsche GT2
8017 alle Modelle

7398 Zenoah
8398 Solo

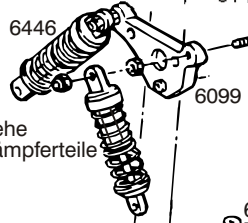
6047 Solo
6431 Zenoah

8300 Solo Sport-Motor
108 FG

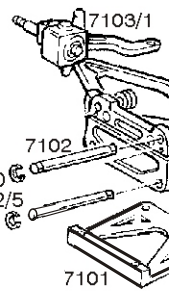


siehe Dämpferteile

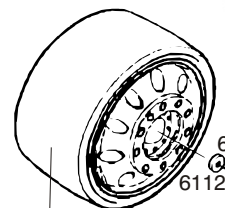
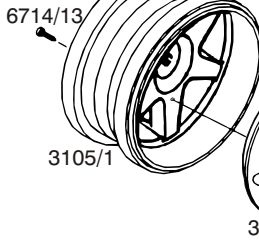
6100/2
Merc. CLK
Porsche GT1



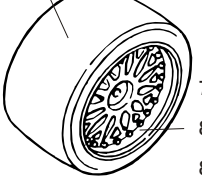
6013



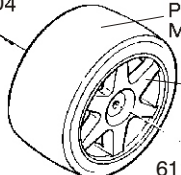
Vorderrad Renn-Trucks



6416/5 Slick-Reifen M
6437/5 Reifeneinlage



8587 Black-Power
G Slicks Einlagen
7414/1 Reifeneinlage



Profil-Reifen/ Einlage
Megane

8104 Megane/ Mc Laren
6734/6
6112
6113 Viper/ CLK-GTR
GT1

7106 Merc. CLK-GTR/ Opel V8/ CLK-DTM/
BMW M3 GTR/ Ferrari
8108 Audi A4/ AMG Merc. C - Klasse/ Peugeot/
Porsche GT2/ Merc. CLK/ Porsche GT1
8106 BMW 320/ Viper/ Honda

Karosserieteile
siehe Ersatzteilliste
od. Hauptkatalog 2

