

Others cases and accessories / Andere koffers en toebehoren /
Andere Koffer und Zusatzgeräte / Autres modèles et accessoires



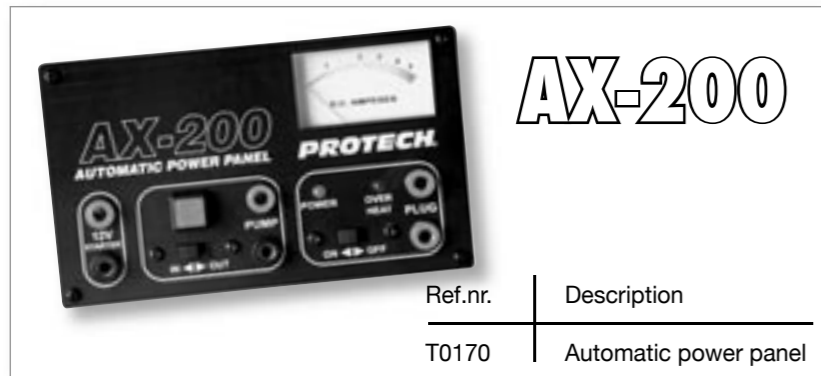
Radio not included

Ref.nr.	Description
M010	Alu. TX case medium - 350x240x140mm
M011	Alu. TX case large - 420x295x140mm



Tools and accessories are not included

Ref.nr.	Description
M012	Alu. field case medium - 430x210x260mm
M013	Alu. field case medium - 430x210x260mm with pre-cut wood interior and vacuumformed power panel holder

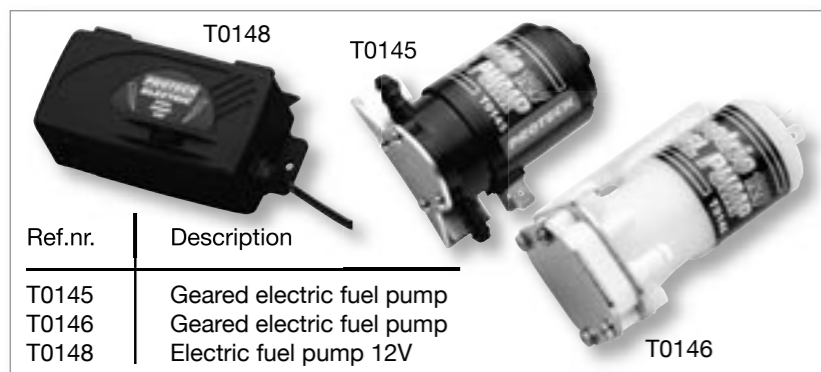


Ref.nr.	Description
T0170	Automatic power panel



Ref.nr.	Description
L12070	Sealed lead acid battery 152x65x94mm - 985g

12V - 7Ah



Ref.nr.	Description
T0145	Geared electric fuel pump
T0146	Geared electric fuel pump
T0148	Electric fuel pump 12V

Starter 46 - 60



Ref.nr.	Description
T0141	Starter .60 17Kg
T0155	Starter .46 14Kg

Profi-line aluminium field case

M013



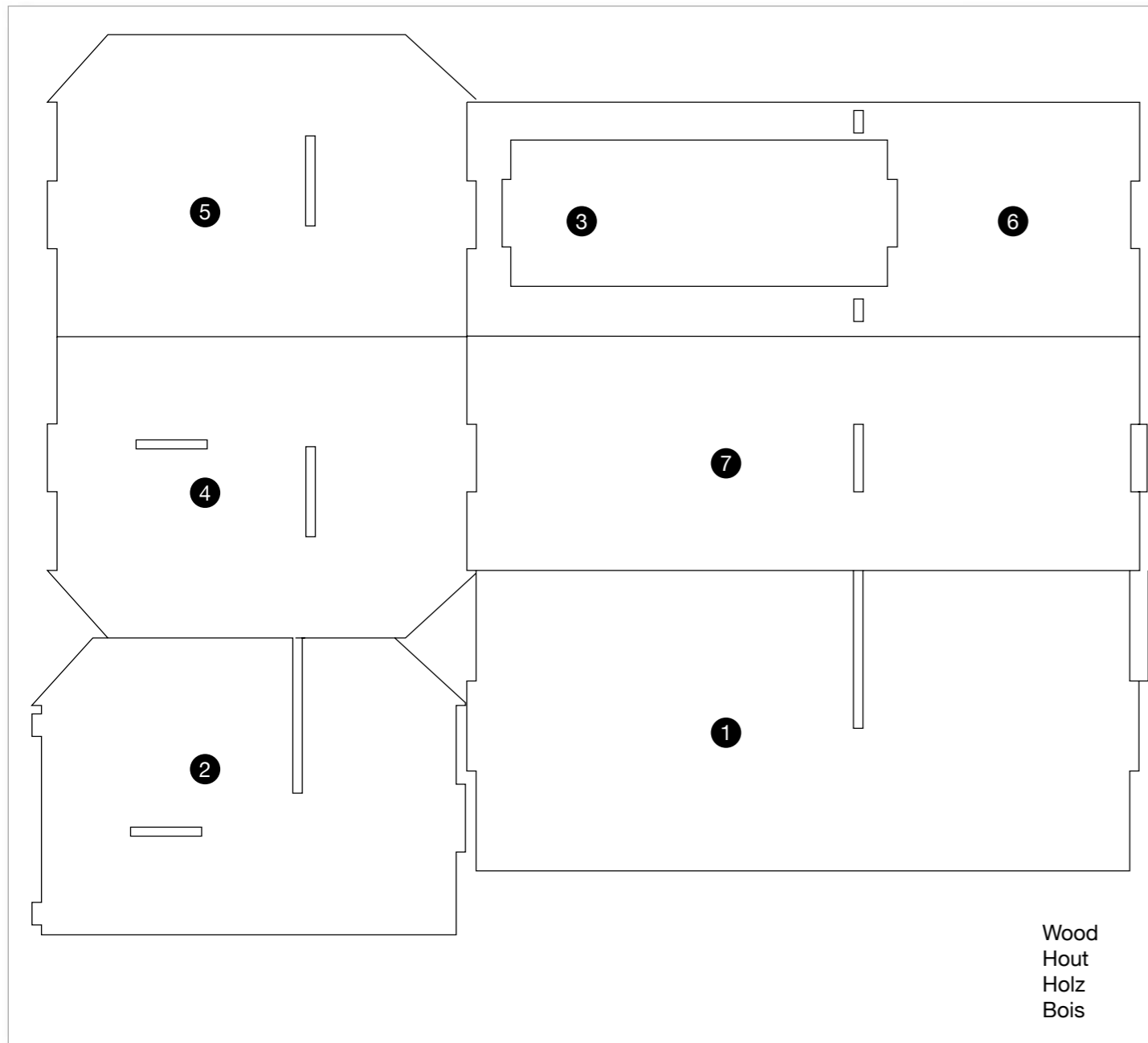
MEDIUM

BUILDING INSTRUCTIONS
BOUWBESCHRIJVING
INSTRUCTIONS DE MONTAGE
BAU-ANLEITUNG

For other R/C products see our general catalog or check our website: <http://www.protech.be>



Kit content / Inhoud van de bouwdoos / Bausatzinhalt / Contenu de la boîte



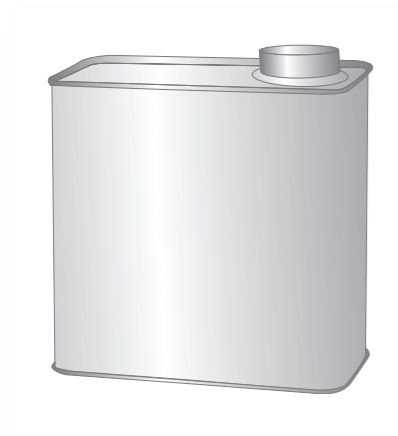
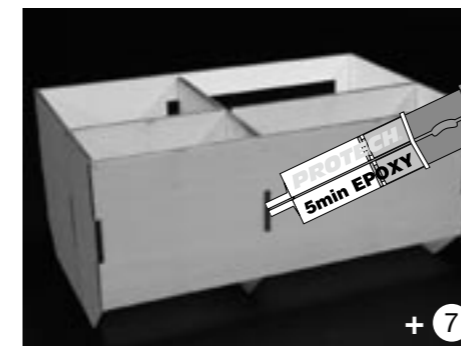
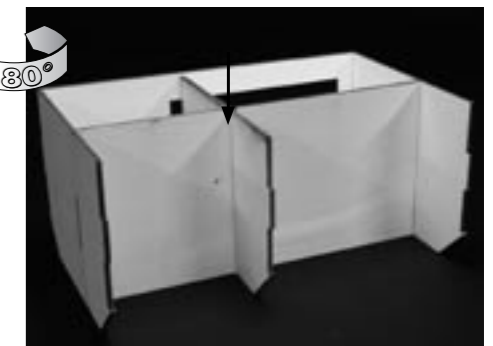
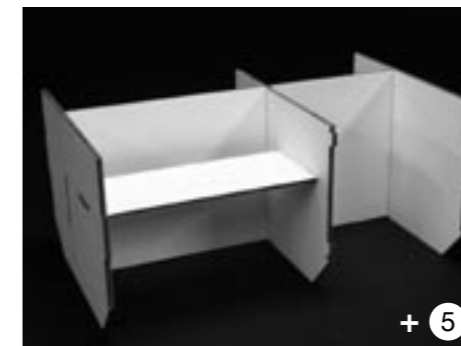
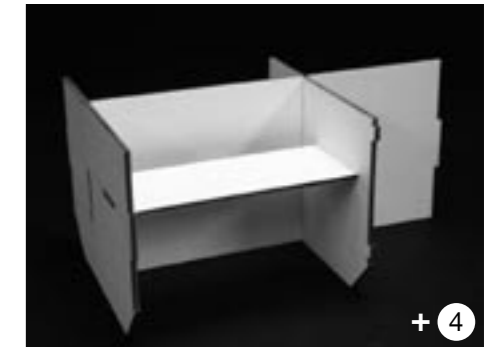
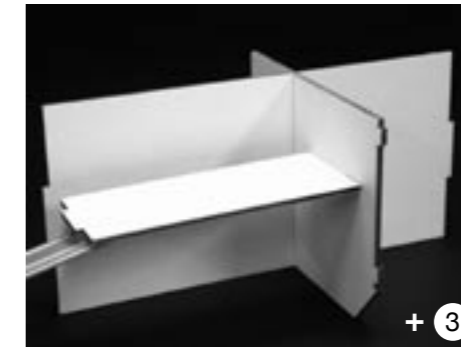
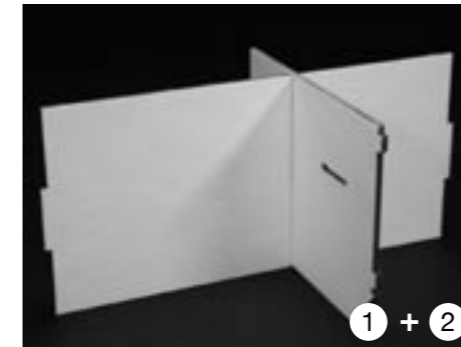
How to assemble / Samenstellen / Zusammenbau / Instructions d'assemblage

To assemble follow the steps on the pictures.

Volg de stappen op de afbeeldingen voor het samenstellen van de kit.

Um zusammenzubauen folgen Sie die Abbildungen.

Pour l'assemblage, suivez les étapes illustrées.



Fuel tank, 2.5 L
Brandstoftank, 2.5 L
Kraftstoffcontainer, 2.5 L
Bidon à carburant, 2.5 L

'Power Panel' holder
'Power Panel' houder
'Power Panel' Halter
Support 'Power Panel'



We recommend you fix the parts with glue to obtain a robust construction. Protect the fuel tank area with fuel resistant paint.

Het is aan te raden om op enkele plaatsen lijm aan te brengen ter versteviging van de constructie. Wij raden aan de plaats waar de brandstofbus komt met brandstofbestendige verf te beschermen.

Wir empfehlen Sie die Teile mit Klebstoff zusammenzukleben, um einen robusten Aufbau zu erreichen. Um die Unterkunft des Kraftstoffcontainers zu konservieren empfehlen wir Sie um es mit Kraftstoffbeständige Farbe zu lackieren.

Nous conseillons d'appliquer quelques points de colle afin de consolider l'assemblage ainsi que d'appliquer une peinture résistante au carburant sur les parties du logement du bidon à carburant.