

TC3 RALLY CONVERSION KIT MANUAL #3020

TC3 RALLY CONVERSION KIT



**CONVERT YOUR TC3 4WD TOURING CAR
INTO A COMPETITION RALLY KIT!**



Body and decals are not included
in #3020 TC3 Rally Conversion Kit



©2000 Associated Electrics, Inc.

REACHING US

CUSTOMER SUPPORT

(714) 850-9342
 FAX (714) 850-1744
 web site: www.rc10.com
 or www.teamassociated.com



ASSOCIATED ELECTRICS, INC.

3585 Cadillac Ave.
 Costa Mesa, CA 92626-1401
 USA
 ©2000 Associated Electrics, Inc.

BEFORE BUILDING

These instructions assume that you already have a TC3 kit. The Conversion Kit contains direct-fit parts that will replace comparable parts on your TC3. The instructions will show you where the TC3 Rally parts go; use your TC3 manual to disassemble your kit properly and reassemble with the new parts. Retain this instruction manual for reference and to help

When the instructions tell you to remove an "original" part, it is referring to the part currently on your TC3 kit.

When the instructions tell you to use a "Rally" part, it is referring to a part that is included in the TC3 Rally Conversion Kit.

Front Shocks

SHOCK SPRING

REMOVE original spring.
 Replace with #6494 green spring.

SHOCK SHAFT

REMOVE original shaft.
 Replace with #6461 .56 shock shaft.

SHOCK OIL

Use 25 wt. oil.

SHOCK PISTON

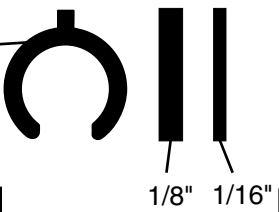
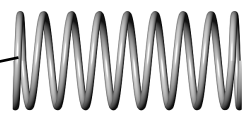
Use #2 piston.

SHOCK LIMITERS

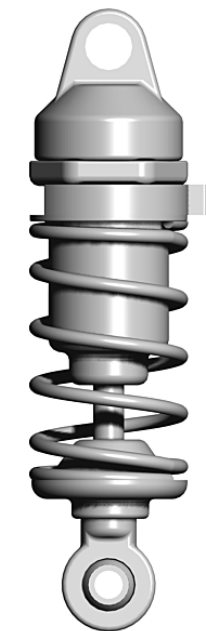
Add 1 stock limiter to shaft inside body.

SHOCK PRELOADS

Use one 1/8" and 1/16" per shock.



preload spacers



(stock TC3 shock)

Rear Shocks

SHOCK SPRING

REMOVE original spring.
 Replace with #8232 black spring.

SHOCK SHAFT

REMOVE original shaft.
 Replace with #6461 .56 shock shaft.

SHOCK OIL

Use 25 wt. oil.

SHOCK PISTON

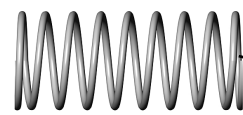
Use #1 piston.

SHOCK LIMITERS

Add 1 stock limiter to shaft inside body.

SHOCK PRELOADS

Use one 1/8", 1/16", and 1/32" per shock.



preload spacers

Wheels & Tires



PRO-LINE 24mm WHEEL
 #3956 24mm wheel

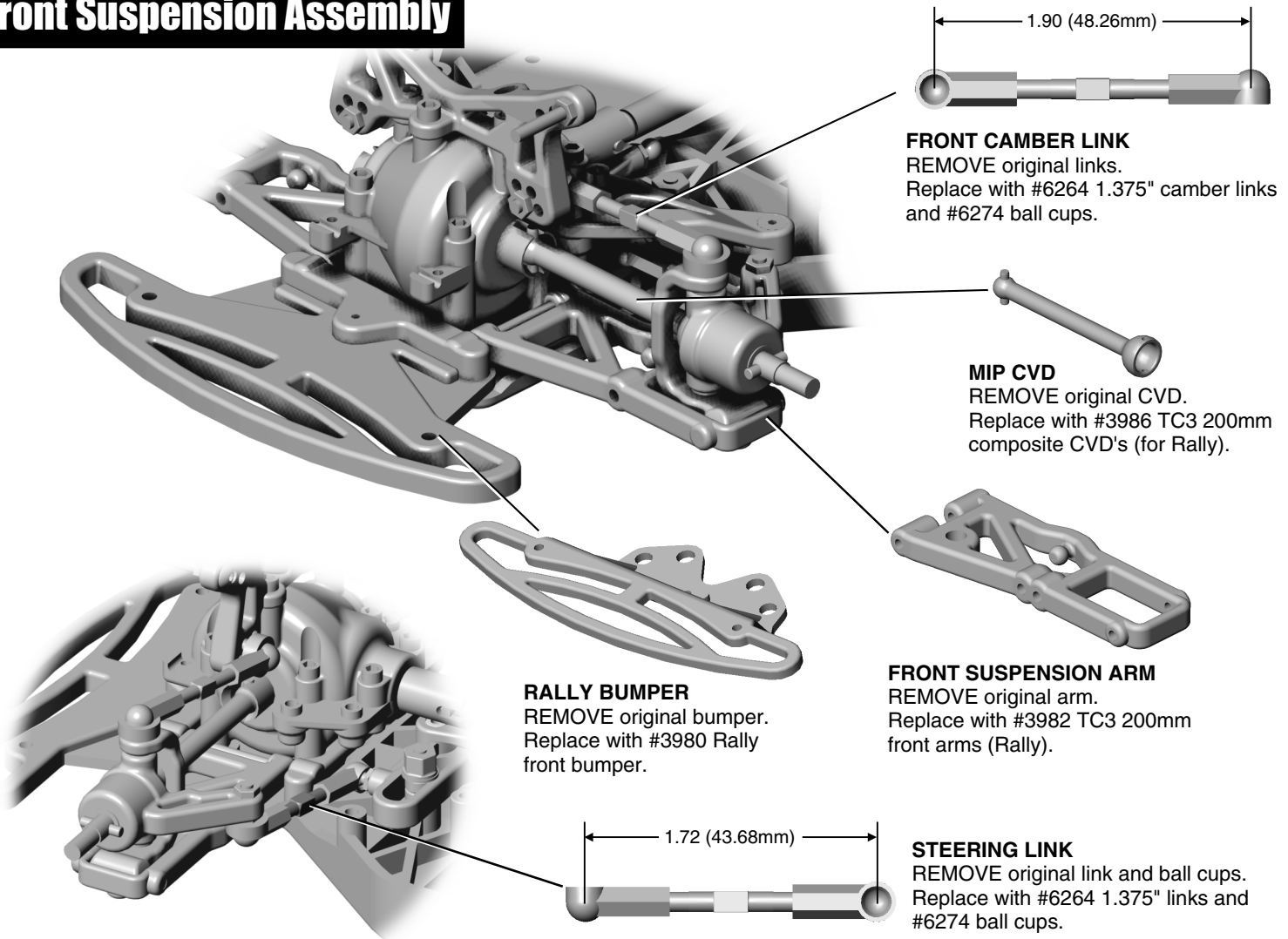


FOAM INSERT
 #3957 foam insert



RALLY TIRE
 #3957 tire

Front Suspension Assembly



Front Shock Mounting

Mount front shock to the stock position on shock tower and outer holes on new arm.

When complete, front suspension should look like the picture below right.
 Compare photos of original TC3 and Rally TC3 Conversion.

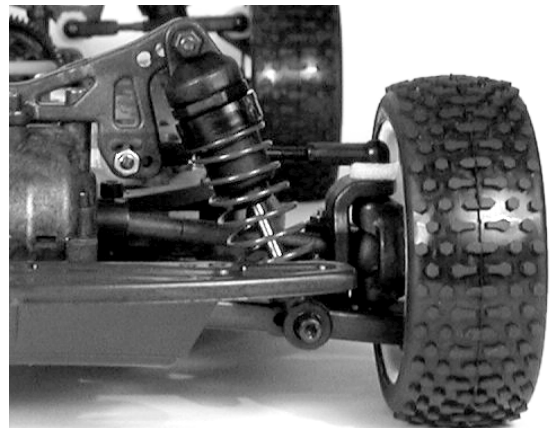
STOCK TC3

CONVERSION CHECKLIST:

RALLY TC3 CONVERSION

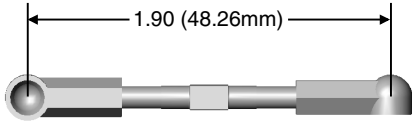


- > Increased ride height.
- > Outside shock hole mounting position on arm.
- > Stock camber link position.
- > Stock shock position on tower.



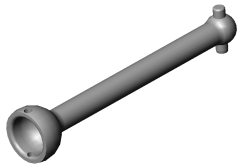
Rear Suspension Assembly

Body posts mounted here



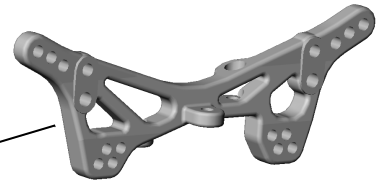
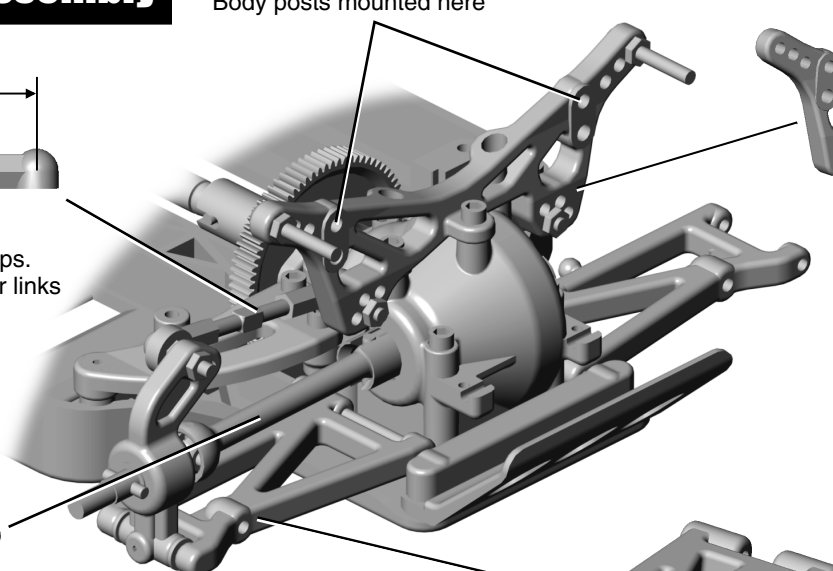
REAR CAMBER LINK

REMOVE original links and ball cups.
Replace with #6264 1.375" camber links and #6274 ball cups.



MIP CVD

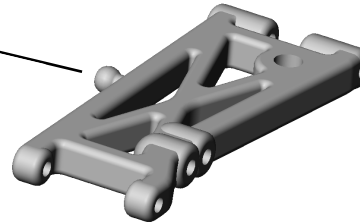
REMOVE original CVD.
Replace with #3986TC3 200mm composite CVD (for Rally).



REAR SHOCK TOWER

REMOVE original tower.
Replace with updated #3895 TC3 rear tower.

Mount original body posts to the back side of the rear tower.



REAR SUSPENSION ARM

REMOVE original arm.
Replace with #3984 TC3 200mm rear arms (for Rally).

Rear Shock Mounting

Mount Rear shocks to the stock position on the rear shock tower and inner holes on the new arms.

When complete, rear end should look like the picture below right.
Compare photos of original TC3 and Rally TC3 Conversion.

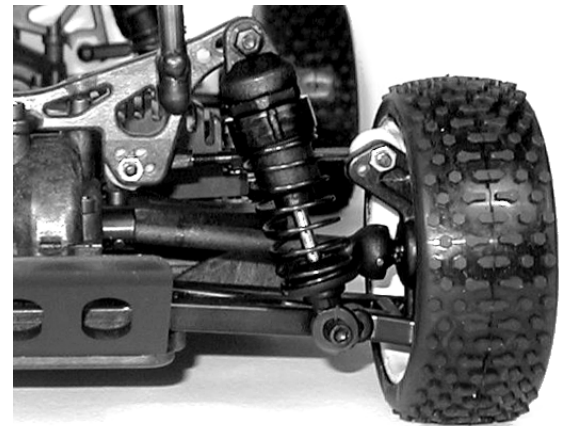
STOCK TC3



CONVERSION CHECKLIST:

- > Increased ride height.
- > Outside shock hole mounting position on arm.
- > Stock camber link position.
- > Stock shock position on tower.
- > Rear body posts mounted on back of tower.

RALLY TC3 CONVERSION



CONVERSION PARTS LIST

| | | | | | | | |
|------|--------------------------------------|-----|-------|------|------------------------------|------|-------|
| 3956 | Pro-Line 24mm Wabash wheel | pr. | 5.95 | 3986 | 200mm composite CVD | pr. | 10.00 |
| 3957 | Pro-Line rally tire with foam insert | pr. | 12.50 | 5428 | 25 Weight Silicone Shock Oil | 2oz. | 3.50 |
| 3895 | TC3 rear tower | 1 | 7.00 | 6264 | Turnbuckle, 1.375" | pr. | 3.00 |
| 3980 | TC3 Rally front bumper | 1 | 4.00 | 6274 | Ball cup | 16 | 5.00 |
| 3982 | TC3 200mm front arm | pr. | 6.00 | 6461 | Shock Shaft, .56 | 1 | 3.00 |
| 3984 | TC3 200mm rear arm | pr. | 6.00 | 6494 | Green spring, 3.5 lb. | pr. | 2.50 |
| | | | | 8232 | Black spring, 3.2 lb. | pr. | 2.50 |