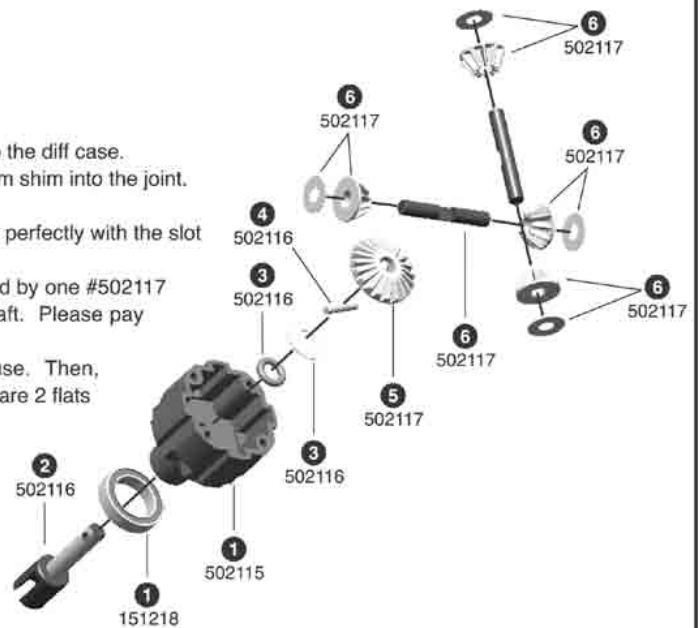


STEP 1

Diff Case Assembly

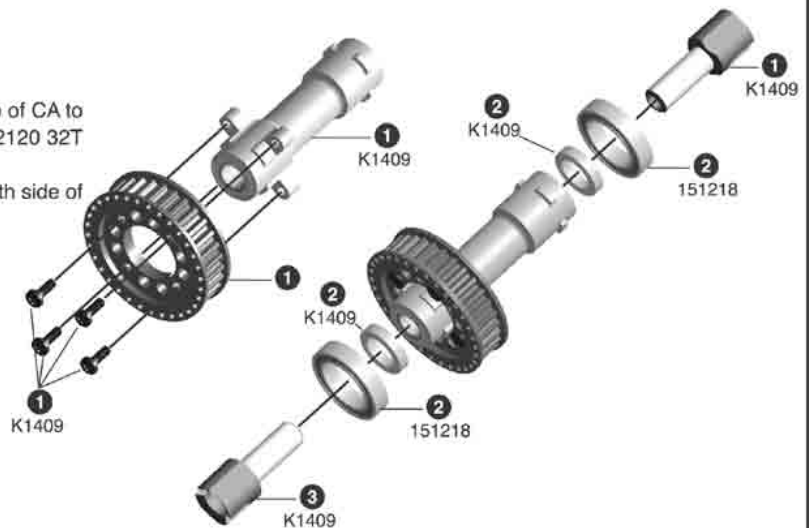
- 1 Place one #151218 12x18x4mm bearing over one #502115 diff case.
- 2 Use a drop of silicone oil on the #502116 diff joint. Slide a #502116 diff joint into the diff case.
- 3 Use a drop of silicone oil on the #502116 O-ring then install the O-ring & 5x12mm shim into the joint.
- 4 Insert #502116 2x11mm pin through the hole in the diff joint.
- 5 Install #502117 large diff bevel gear onto the diff joint. Make sure the pin aligns perfectly with the slot in the gear.
- 6 Slide one #502117 small diff bevel gear onto #502117 bevel gear shaft, followed by one #502117 4x10mm shim. Repeat this step for the other side of this shaft & the other shaft. Please pay close attention to the small bevel gear direction.
- 7 Slide the shaft assembly into the diff case. It doesn't matter which slot you use. Then, insert the second shaft assembly 90 degrees to the first shaft assembly. There are 2 flats on each shaft. Please make the two shafts interlock (flat to flat).



STEP 2

Front One Way Assembly

- 1 **PLEASE READ K FACTORY MANUAL FIRST.** Add a small drop of CA to the #502120 front pulley lid, spread equally as shown. Attach #502120 32T pulley to the #K1409 front one way with 4pcs #K1409 screws.
- 2 Place a #K1409 alum. ring & a #151218 12x18x4mm bearing on both side of the front one way.
- 3 Slide a #K1409 one way joints on both side of the front one way.



STEP 3

Fill Silicone Oil

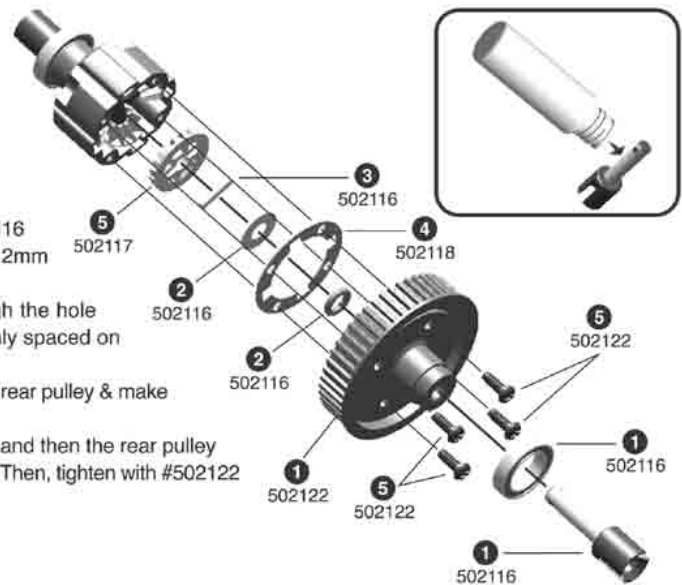
- 1 To complete the rear diff assembly, find the #502124 #30000 silicone oil and the #502125 #600 silicone oil. Holding the diff case upright, fill with 50% thick & 50% thin silicone oil to the top of the case.



STEP 4

Rear Diff Assembly

- 1 Use a drop of silicone oil on the #502116 diff joint. Slide a #502116 diff joint into the diff case.
- 2 Use a drop of silicone oil on the #502116 O-ring then install the O-ring & 5x12mm shim into the joint.
- 3 Insert #502116 2x11mm pin through the hole in the diff joint. Make sure it is evenly spaced on both sides of the diff joint.
- 4 Place a #502118 gasket in the nylon rear pulley & make sure the gasket is aligned.
- 5 Place #502117 large diff bevel gear and then the rear pulley assembly on the diff case assembly. Then, tighten with #502122 3x10mm cross BH TP screws.



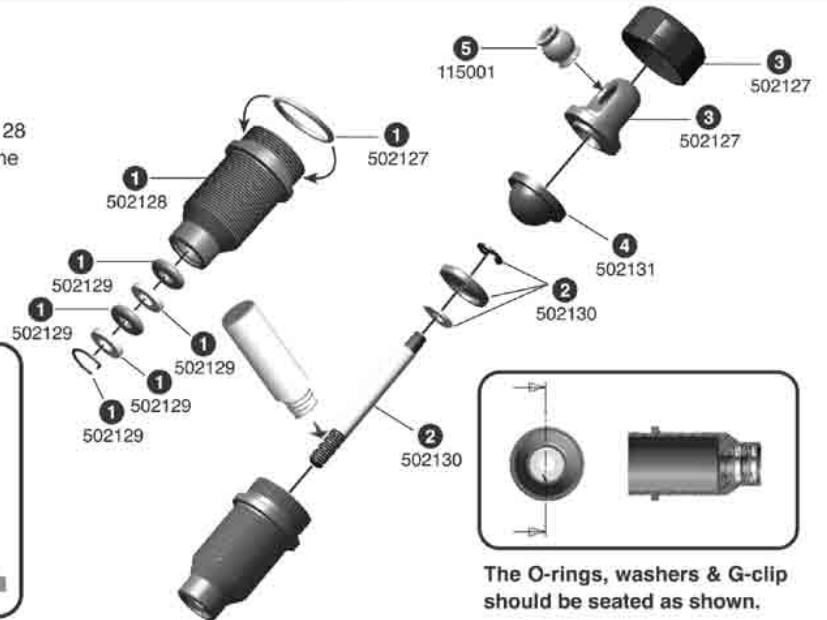
BAG C

 502127, qty 4 Shock Cap Ball End (C1)	 502129, qty 4 G-clip (C2)	 502129, qty 8 P3 O-ring (C2)	 502129, qty 8 Shock Body Washer (C2)	 502130, qty 4 Shock Piston Washer (C2)	 502130, qty 4 Shock Piston E-clip (C2)	 115001, qty 4 Flanged Steel Ball (C3)	 502134, qty 4 Shock Spring Cup (C4)	 502128, qty 4 Shock Collar (C1)
 115022, qty 4 Shock Ball Cup (C4)	 502130, qty 4 Shock Piston (C2)	 502130, qty 4 Shock Shaft (C3)	 502131, qty 4 Membrane (C5)	 502127, qty 4 Shock Cap O-Ring (C5)	 502128, qty 4 Shock Collar O-Ring (C5)			
 502128, qty 4 Hard Coated Threaded Shock Body (C1)	 502127, qty 4 Shock Cap (C1)	 502144, qty 4 Shock Spring (C1)	 502125, qty 1 #600 Silicone Oil (White Body) (C3)					

STEP 1

Shock Body Assembly

- Insert #502129 P3 O-ring, washer, P3 O-ring, washer into #502128 shock body & fasten with #502129 G-clip. Slide the G-clip into the groove in the bottom of the shock body. Make sure it is well seated. Place a couple drops of oil on the O-rings. Install #502127 P10 O-ring on the shock body.
- On the #502130 shock shaft, install a #502130 shock piston washer & followed by a shock piston, then slide #502130 E-clip into the groove. Add a drop of silicone oil on the shock shaft threads. Insert the shock shaft assembly into the shock body.
- Slide #502127 shock cap ball end into shock cap.
- Install #502131 membrane in the top of the shock cap assembly.
- Push the #115001 flanged ball & #502127 shock cap ball end together.



STEP 2

Fill Silicone Oil

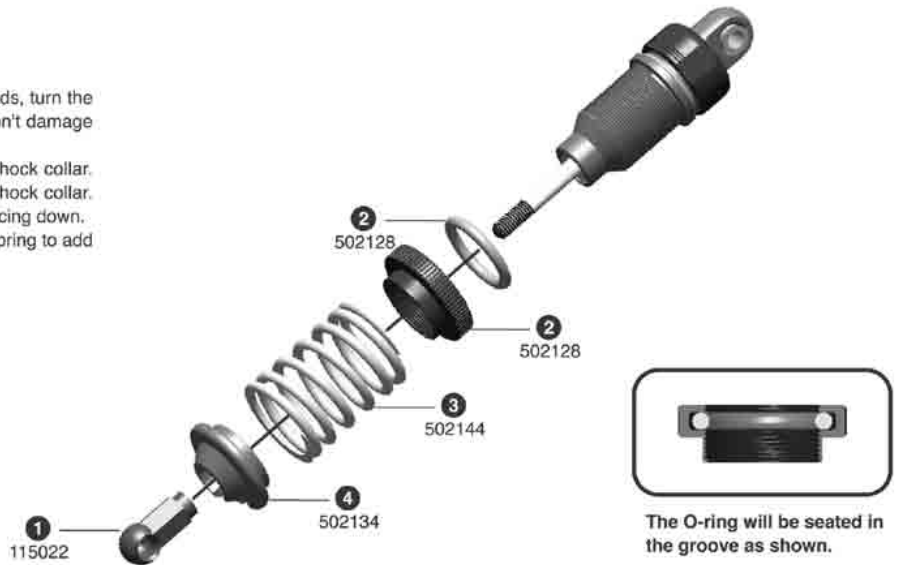
- Holding the shock upright, fill with #502125 #600 shock silicone oil to the top of the body.
- Slowly move the shaft up & down several times. Let the oil settle and allow the air to escape.
- Refill with oil to the top of the body.
- Install the shock cap assembly onto the shock body assembly.



STEP 3

Complete The Shock Assembly

- 1 Hold the shaft with a rag and needlenose pliers next to threads, turn the #115022 shock ball cup onto the end of the shock shaft. Don't damage the shock shaft.
- 2 Slide a #502128 shock collar O-ring into the groove in the shock collar. Put one drop of oil on the O-ring before you thread on the shock collar. Thread on the shock collar. Make sure that the shoulder is facing down.
- 3 Slide a #502144 shock spring on the shock. Compress the spring to add a #502134 spring cup to the shock.
- 4 Please repeat the above steps for the remaining 3 shocks.



The O-ring will be seated in the groove as shown.

Optional Parts

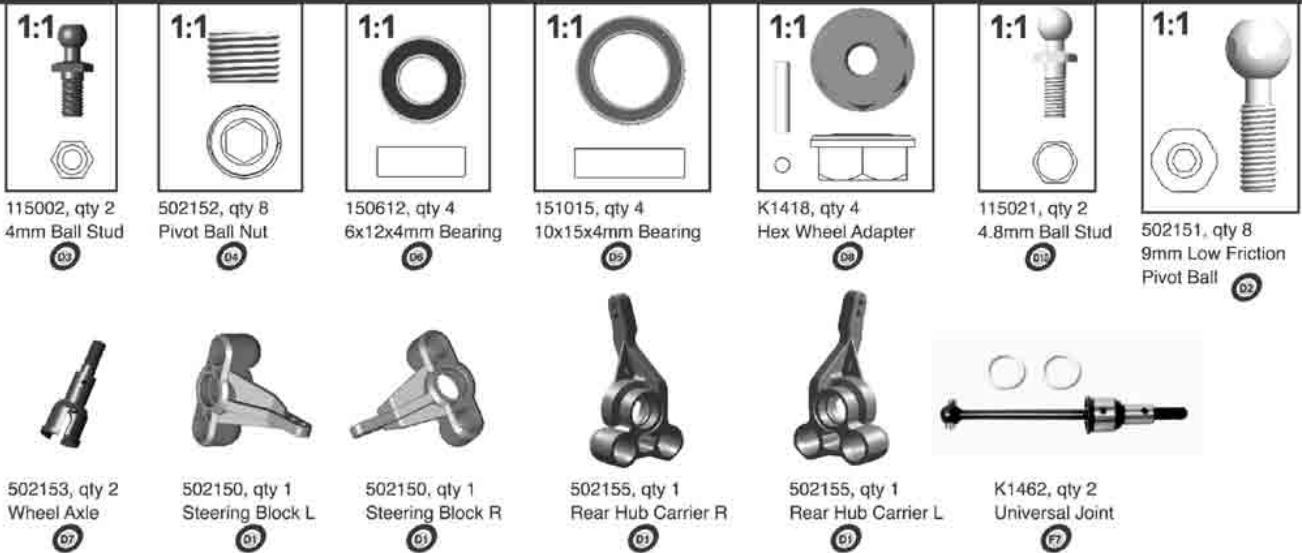
502135 Shock Spring 1.2mm
502136 Shock Spring 1.3mm
502137 Shock Spring 1.4mm

502138 Shock Spring 1.5mm
502139 Shock Spring 1.6mm
502140 Shock Spring 1.7mm (Silver)

502141 Shock Spring 1.8mm
502142 Shock Spring 1.9mm
502143 Shock Spring Set (8 pairs)



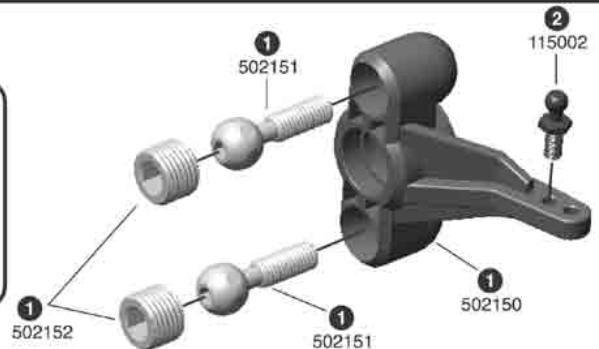
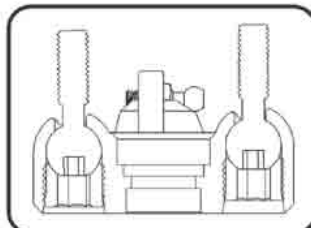
BAG D



STEP 1

Left Steering Block Pivot Ball Assembly

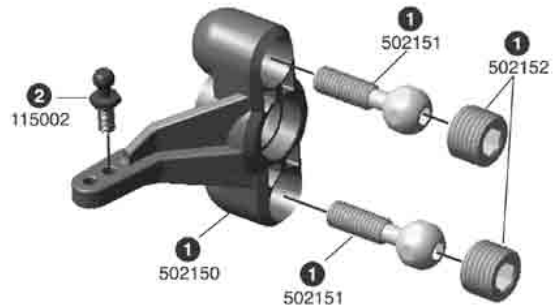
- 1 Insert #502151 pivot balls into #502150 left steering block & secure them with #502152 pivot ball nuts. The pivot ball should move freely without any binding or excess play.
- 2 Thread a #115002 4mm ball stud into the first hole of the steering block.



STEP 2

Right Steering Block Pivot Ball Assembly

- 1 Insert #502151 pivot balls into #502150 right steering block & secure them with #502152 pivot ball nuts. The pivot ball should move freely without any binding or excess play.
- 2 Thread a #115002 4mm ball stud into the first hole of the steering block.

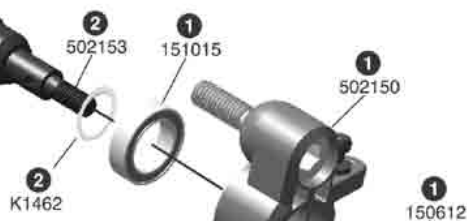


STEP 3

Steering Block Assembly

- 1 Slide a #151015 10x15x4mm & a #150612 6x12x4mm bearing into the #502150 steering block.
- 2 Slide #K1462 universal joint & washer into the steering block assembly.
- 3 Slide in #K1418 2x11mm pin through the universal joint. Slide the #K1418 alum. hex wheel adapter over the universal joint & fasten the pin with the cap screw.

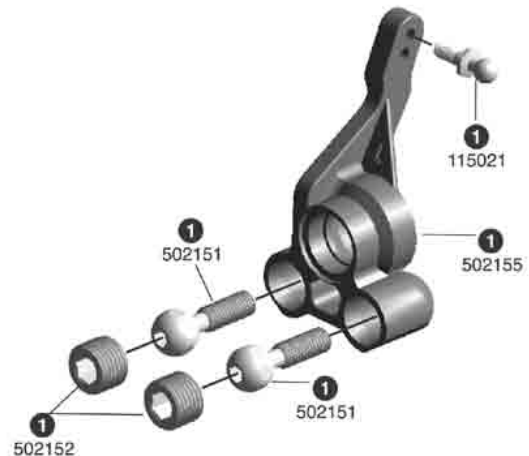
- 4 Repeat these steps for the right steering block assembly.



STEP 4

Left Hub Carrier Pivot Ball Assembly

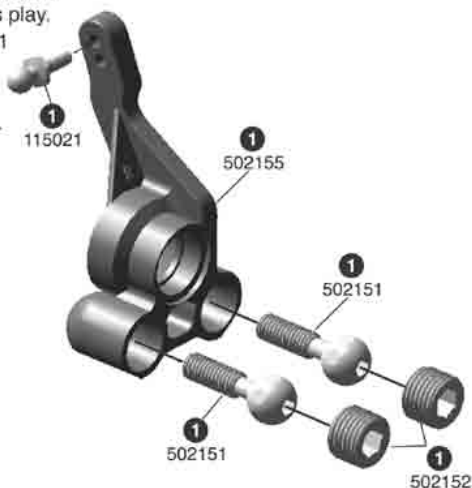
- 1 Insert #502151 pivot balls into #502155 left hub carrier & secure them with #502152 pivot ball nuts. The pivot ball should move freely without any binding or excess play.
- 2 Thread a #115021 4.8mm ball stud into the top hole of the hub carrier.



STEP 5

Right Hub Carrier Pivot Ball Assembly

- 1 Insert #502151 pivot balls into #502155 right hub carrier & secure them with #502152 pivot ball nuts. The pivot ball should move freely without any binding or excess play.
- 2 Thread a #115021 4.8mm ball stud into the top hole of the hub carrier.



STEP 6

Rear Hub Carrier Assembly

- 1 Slide one #151015 10x15x4mm & one #150612mm 6x12x4mm bearing into the left rear hub carrier.
- 2 Slide #502153 wheel axle through #K1462 washer & into the rear hub carrier assembly.
- 3 Slide in #K1418 2x11mm pin through the universal joint. Slide the #K1418 alum. hex wheel adapter over the universal joint & fasten the pin with the cap screw.

- 4 Repeat these steps for the right rear hub carrier assembly.

