



PARTS CATALOG FOR EB-4 S3 KIT

No.6230-K10



1/8 Nitro Powered 4WD Racing Buggy

Manufactured by **THUNDER TIGER CORPORATION**
Distributed in North America by **ACE HOBBY DISTRIBUTORS, INC.**

<http://www.thundertiger.com>
<http://www.acehobby.com>



No.6230-K10

1/8 Nitro Powered 4WD Racing Buggy



The new EB-4 S3 comes with new features that have never been applied to a 1/8th scale nitro buggy before, such as the super low center of gravity, radical engineering of a car construction and more than innovative, good looking and high performance suspension.

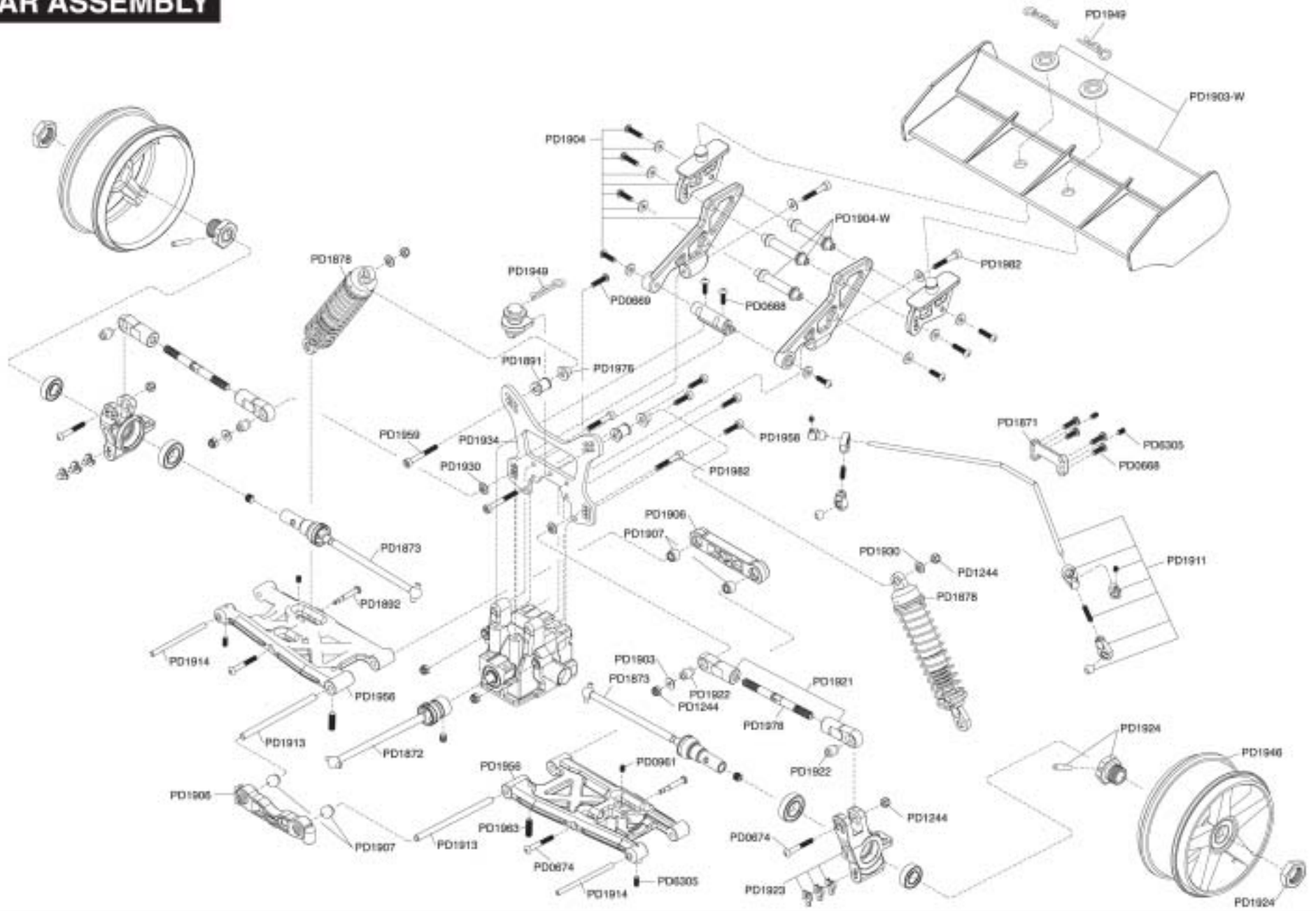
This is a look into the future for 1/8th scale cars and the future is here with Thunder Tiger.



INNOVATIVE FEATURES

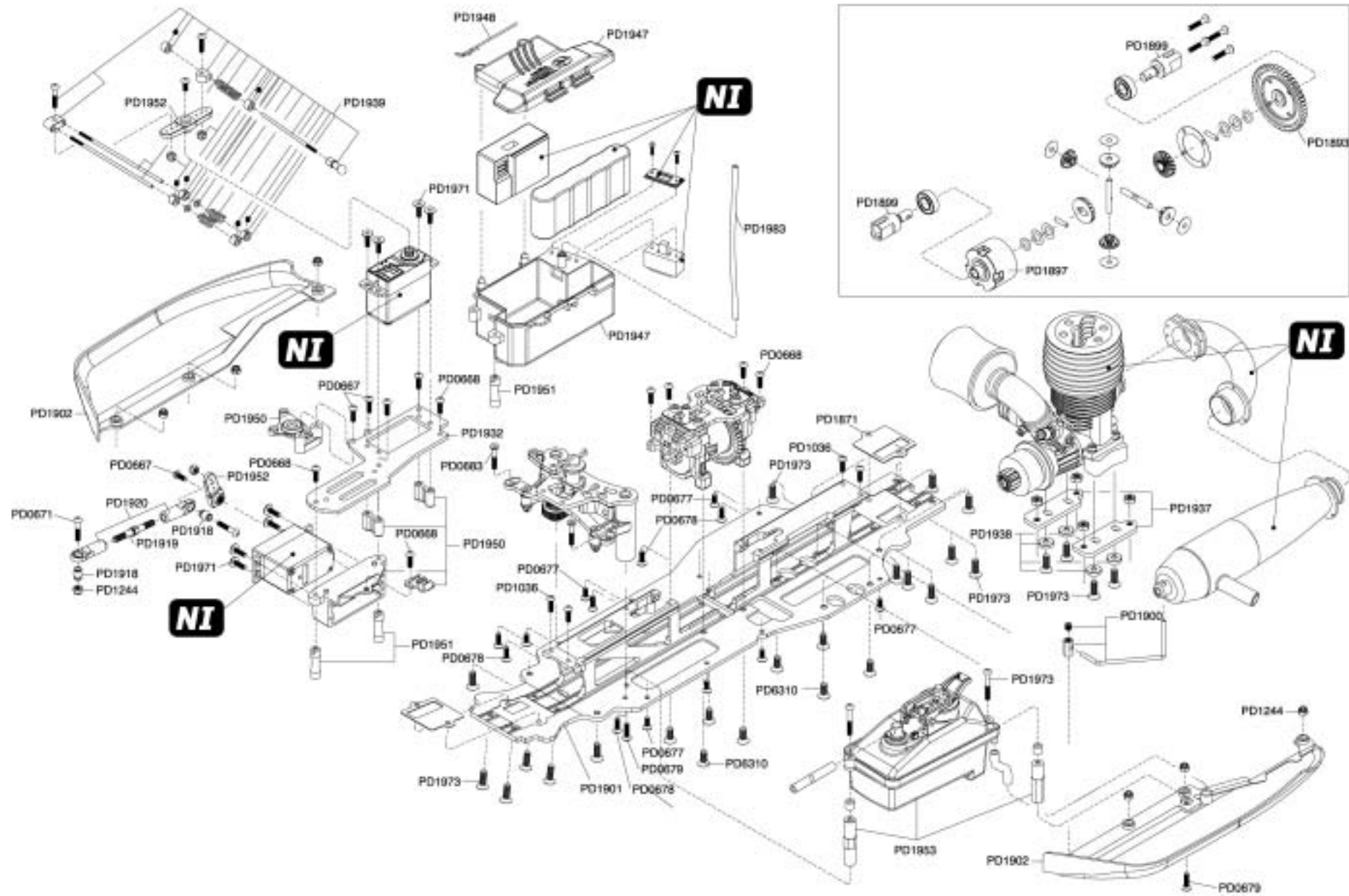
- Unique Delta-Box machined hardened chassis provides more rigidity than a conventional stamped chassis.
- Patent captured hinge pins no E CLIPS needed, also prevents bound up suspension components.
- Front A-arm with adjustable Pivot-Ball Suspension
- Front shocks are protected behind the shock tower and mounted through the upper A-arm.
- A7075-T6 Front/Rear shock towers
- A7075-T6 Engine deck for easy installation.
- A7075-T6 Shock absorber cap provides longer reliability.
- Aluminum upper Susp. holder & CTR diff brace.
- Aluminum servo tray posts and wing posts.
- AB (Anti-Bumping) shocks with 3.5mm shafts provide various damping and rebounding.
- Ultra long, light weight suspension arms
- Small transmission bulkheads with gasket
- Lightweight machined diff bevel gears reduce the inertia of rotation enhancing the acceleration and deceleration performance.
- The Non-Offset drive train decreases the loss of power transfer from CTR Diff to the four wheels to optimize the acceleration.
- CNC machined dual composite heavy duty and ultra light brake disc offers stable braking power with its anti-oil (water) formula.
- Composite material competition clutch shoes
- Lightened and small size flywheel offers a stable engine operation and acceleration.
- Dual fuel pick up.
- Graphite front brace, radio tray and center diff top plate.
- Heavy duty CVD universal drive trains*Front/Center/Rear*
- Enclosed radio box protects receiver and batteries from any foreign elements.
- Laid down steering servo for low center of gravity
- Complete set of rubber-sealed ball bearings included.
- Fully adjustable Toe, Caster and Ackerman.
- Adjustable anti-dive angle

REAR ASSEMBLY

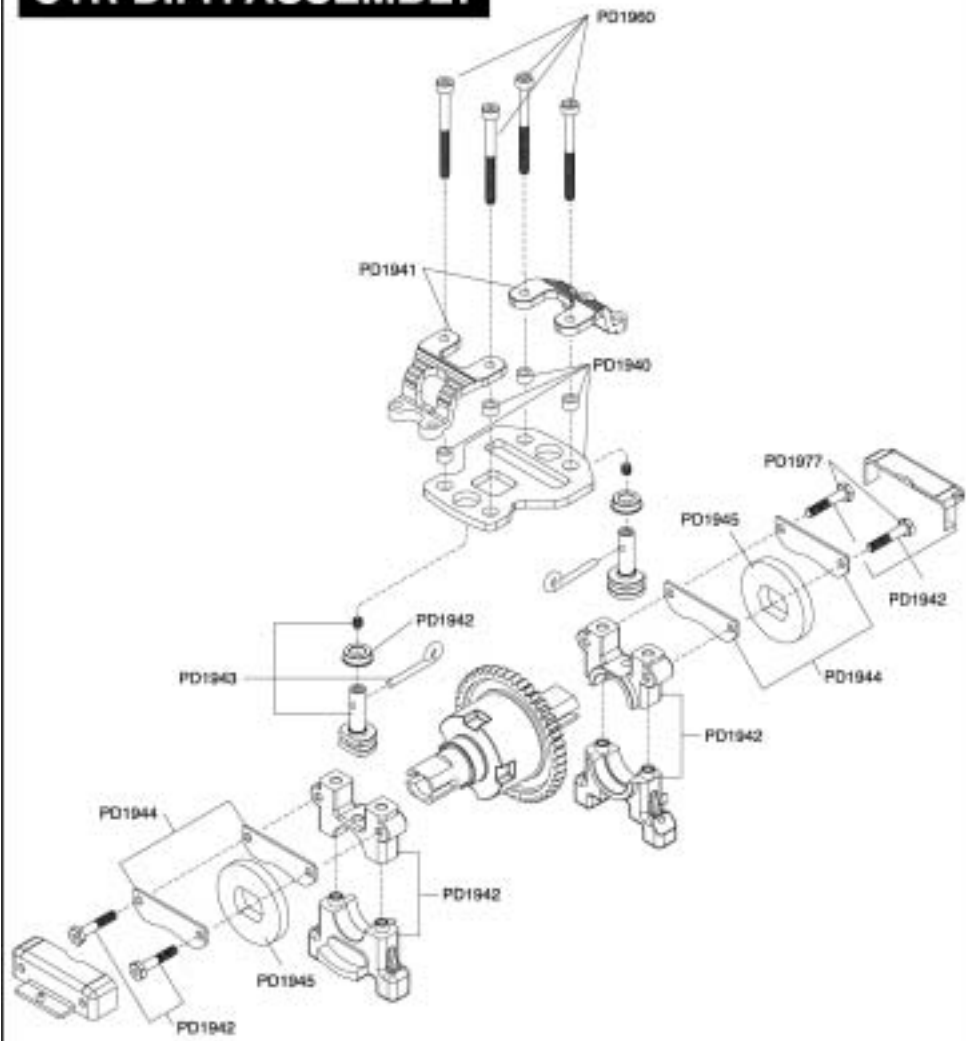


CHASSIS ASSEMBLY

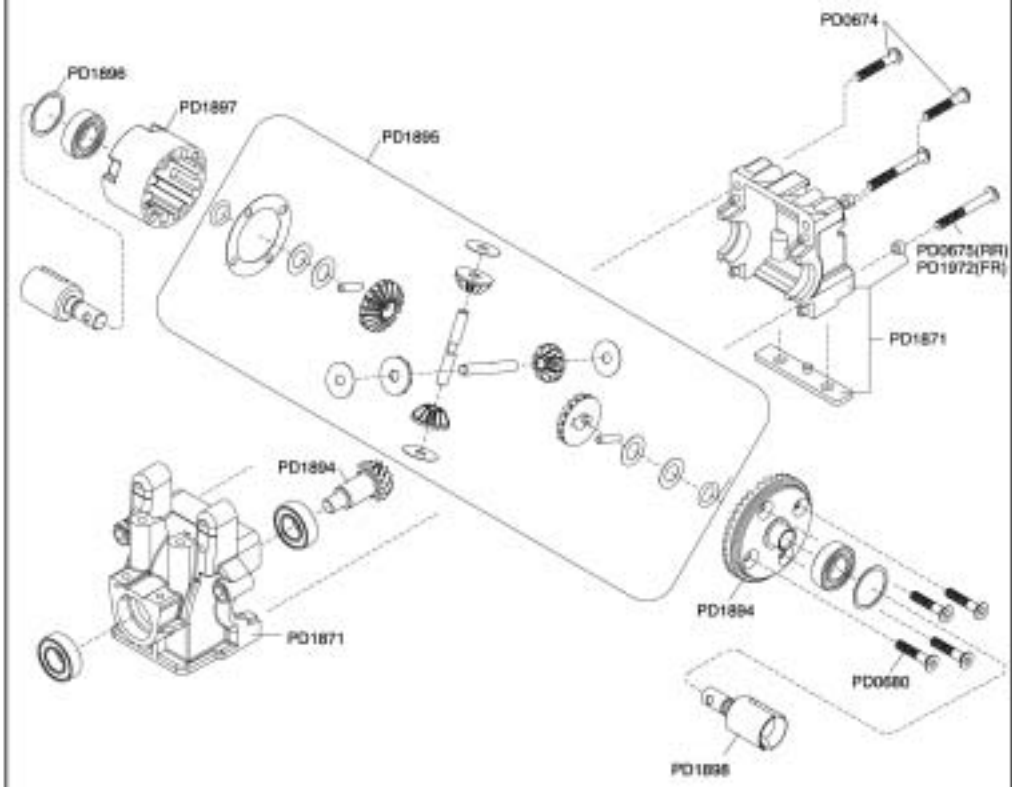
NI Not Included



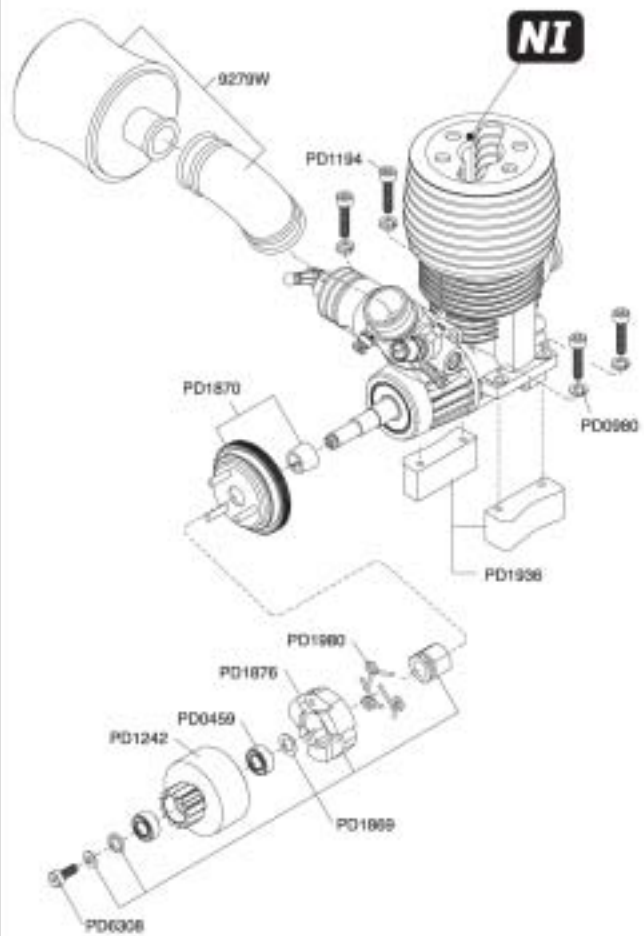
CTR DIFF. ASSEMBLY



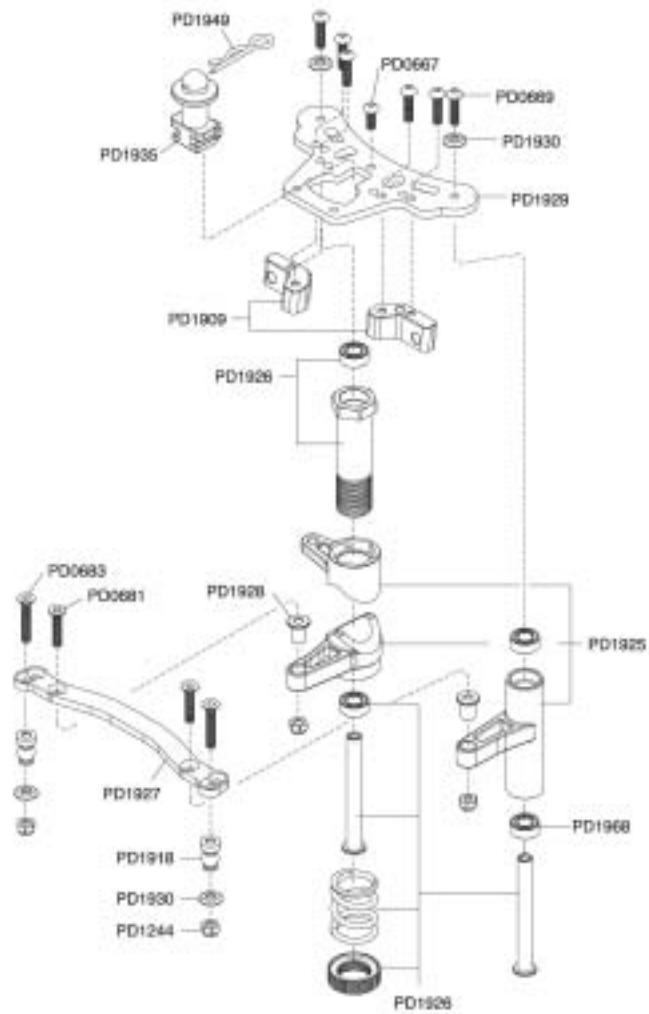
FR/RR DIFF. ASSEMBLY



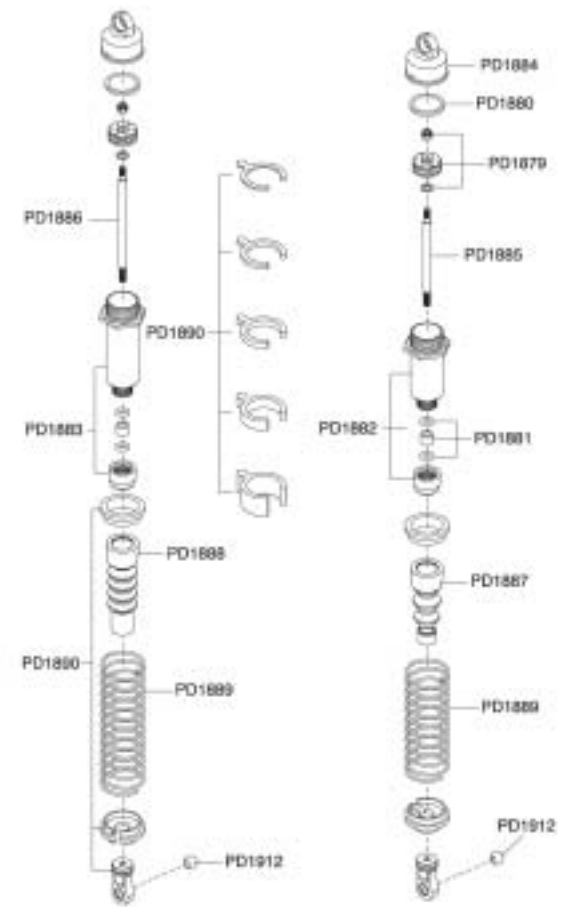
ENGINE ASSEMBLY



SERVO SAVER ASSEMBLY



SHOCK ASSEMBLY



NI Not Included

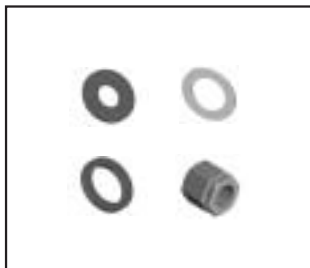
EB-4 S3 KIT PARTS LIST



9279W AIR FILTER, 1/8 WHITE



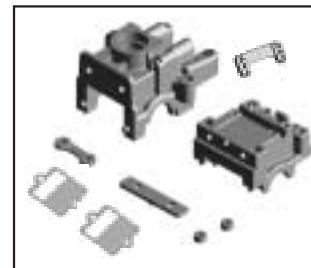
PD1242 1/8 CLUTCH BELL, 26MM 13T



PD1869 CLUTCH HARDWARE, 1/8



PD1870 FLYWHEEL SET



PD1871 TRANS CASE/BULK HEAD SET,S3



PD1872 CTR CVA FR/RR,S3



PD1873 RR CVA (2),S3



PD1874 FR CVA (2),S3



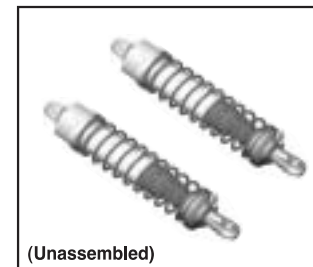
PD1875 UNIV. REBUILD KIT,S3



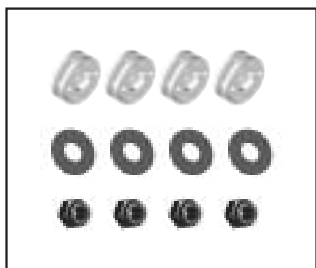
PD1876 CLUTCH SHOE (3), 1/8



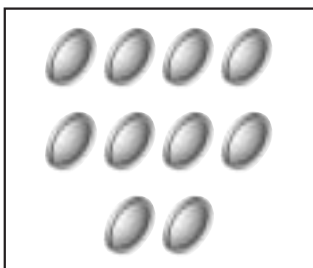
(Unassembled)
PD1877 FR SHOCK SET(2) ,S3



(Unassembled)
PD1878 RR SHOCK SET(2) ,S3



PD1879 SHOCK PSITON(4),S3



PD1880 SHOCK DIAPHRAGM (10),S3



PD1881 O-RINGS & SPACER,S3



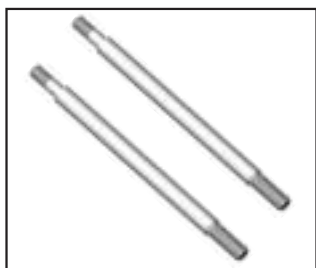
PD1882 FR SHOCK BODY(2),S3



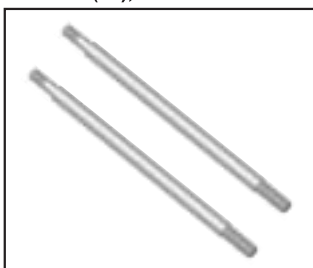
PD1883 RR SHOCK BODY(2),S3



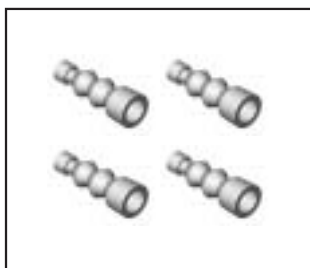
PD1884 FR SHOCK CAP(2),S3



PD1885 FR SHOCK SHAFT(2) ,S3



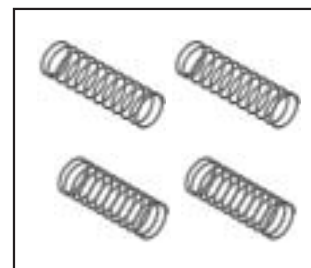
PD1886 FR SHOCK SHAFT(2),S3



PD1887 FR SHOCK BOOT(4),S3



PD1888 RR SHOCK BOOT(4),S3



PD1889 FR/RR SHOCK SPRING (2),1.5mm(4.3lb/3.2lb)S3

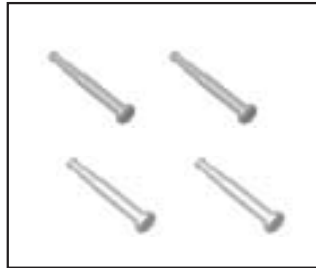


PD1890 SHOCK PLASTIC PARTS,S3

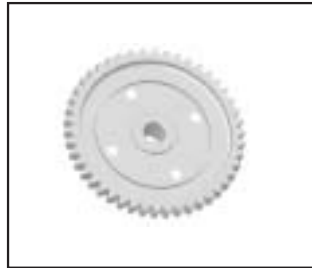
EB-4 S3 KIT PARTS LIST



PD1891 FR/RR SHOCK STAND OFF,S3



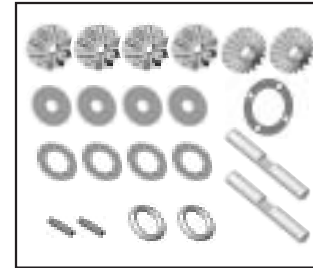
PD1892 FR/RR SHOCK SET PIN,S3



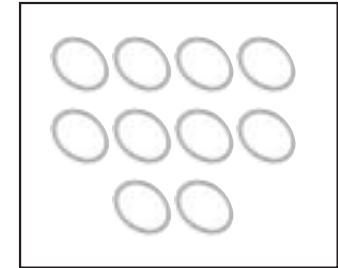
PD1893 STEEL MAIN GEAR, 46T, S3



PD1894 DIFF BEVEL GEAR SET, S3



PD1895 DIFF GEAR& PARTS,S3



PD1896 DIFF SHIM(10),0.2mm, S3



PD1897 DIFF CASE,S3



PD1898 DIFF OUTDRIVE(2) FR& RR,S3



PD1899 DIFF OUTDRIVE(2), CTR,S3



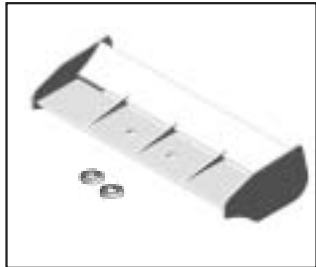
PD1900 MUFFLER MNT. WIRE,S3



PD1901 CHASSIS,S3



PD1902 CHASSIS GUARD,S3



PD1903-W REAR WING, WHITE, 1/8



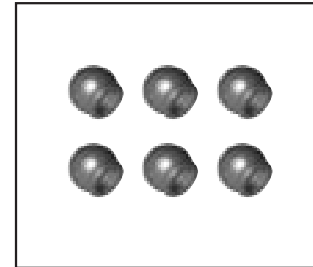
PD1904 WING ASSEMBLY ,S3



PD1905 FF SUSP PLATE, S3



PD1906 SUSP. PLATE SET, S3



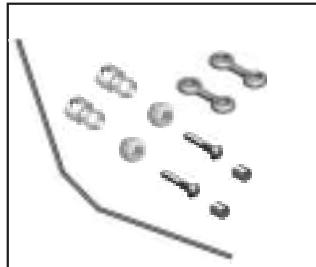
PD1907 SUSP. PLATE JOINT,S3



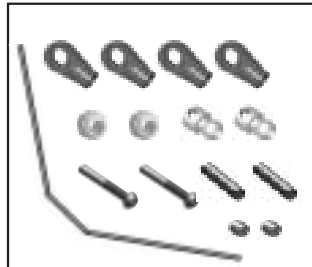
PD1908 UP SUSP. ARM PLATE,S3



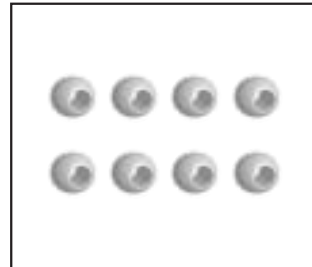
PD1909 FR UP SUSP. HINGE HOLDER, S3



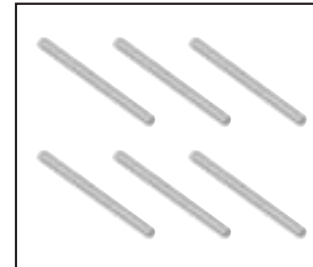
PD1910 FR SWAY BAR M&H, 2.7mmS3



PD1911 RR SWAY BAR M&H, S3



PD1912 PIVOT BALL, S3



PD1913 SUSP. HINGE PIN SET, S3

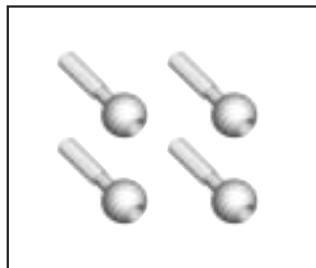


PD1914 RR LOWER HINGE PIN, S3

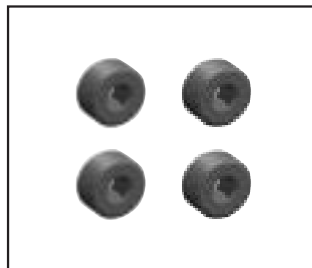
EB-4 S3 KIT PARTS LIST



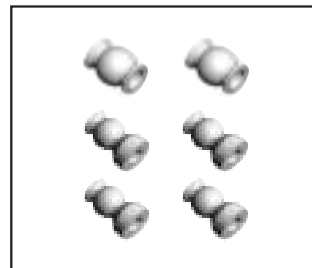
PD1915 KNUCKLE ,S3



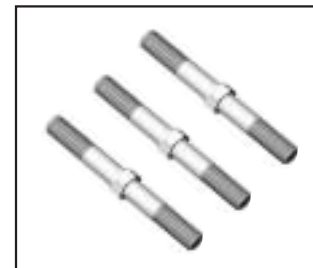
PD1916 ADJ. BALL (4),S3



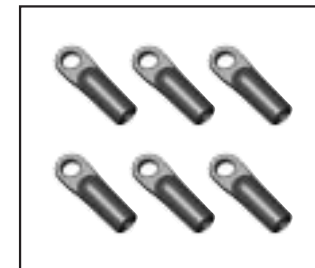
PD1917 ADJ. SCREW (4),S3



PD1918 ST.PIVOT BALL,S3



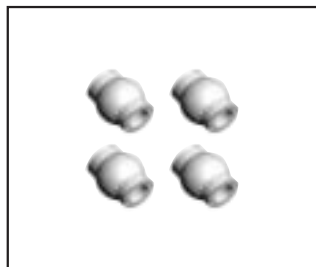
PD1919 ST.TURNBUCKLE,S3



PD1920 ST.TIE END,S3



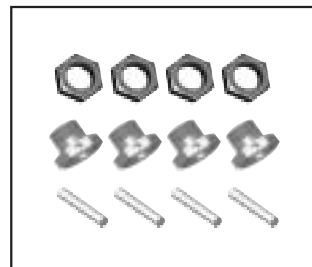
PD1921 RR TIE END,S3



PD1922 RR.PIVOT BALL,S3



PD1923 REAR HUB SET,S3



PD1924 HEX WHEEL ADAPTER SET,1/8, S3



PD1925 SERVO SAVER PL. PARTS,S3



PD1926 SERVO SAVER ML. PARTS,S3



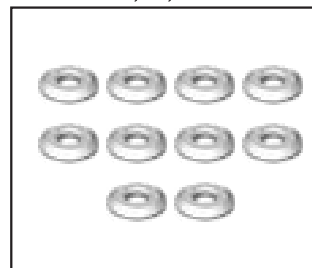
PD1927 STEERING SLIDER,S3



PD1928 SERVO SAVER BUSHING,S3



PD1929 SERVO SAVER TOP PLATE,TITANIUM, S3



PD1930 CONE WASHER, d4mm S3



PD1931 FR BUMPER, S3



PD1932 CARBON SERVO TRAY, TITANIUM S3



PD1933 A7075 FR SHOCK TOWER,S3



PD1934 A7075 RR SHOCK TOWER,S3



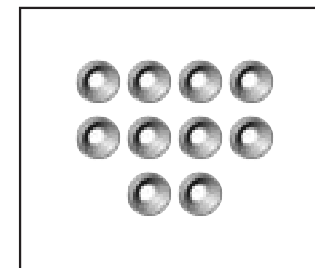
PD1935 FF/RR BODY MOUNTS & POSTS



PD1936 ENGINE MOUNT,S3

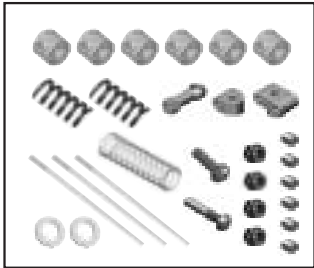


PD1937 A7075 ENGINE DECK,S3



PD1938 ENGINE MOUNT WASHER,S3

EB-4 S3 KIT PARTS LIST



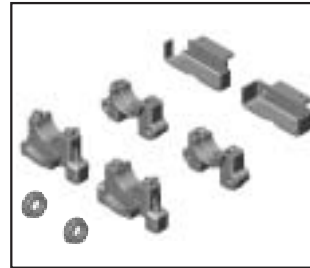
PD1939 THRO/ BRAKE LINKAGE, S3



PD1940 CTR DIFF TOP PLATE, TITANIUM, S3



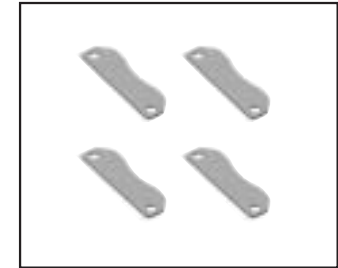
PD1941 CTR DIFF BRACE, S3



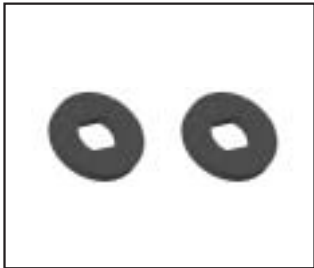
PD1942 CTR DIFF PL. ASSY.,S3



PD1943 BRAKE CAM & HARDWARE,S3



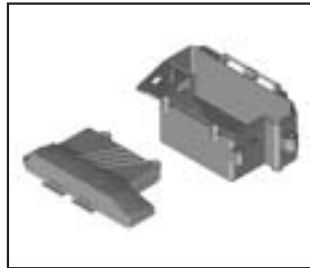
PD1944 BRAKE PADS & SCREWS,S3



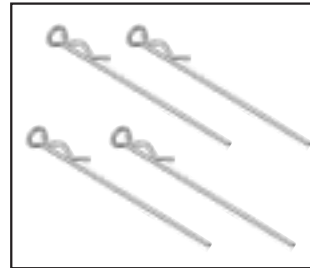
PD1945 BRAKE DISCS,S3



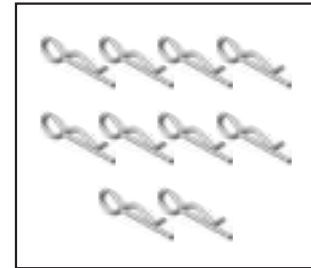
PD1946 5 SPOKE WHL, 17mm, WHITE, 1/8



PD1947 RECEIVER BOX,S3



PD1948 R CLIPS(4),LONG



PD1949 R CLIPS(4),SHORT



PD1950 SERVO MOUNT ACC,S3



PD1951 ALUM SERVO TRAY POST,S3



* FITS FUTABA/ JR, AIRTRONIC, KO PROP

PD1952 SERVO HORN, S3



PD1953 FUEL TANK & POST, S3



PD1954 UP SUSP ARM SET (2),S3



PD1955 LWR SUSP ARM SET (2), S3



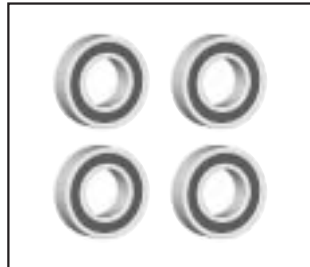
PD1956 REAR SUSP ARM SET (2), S3



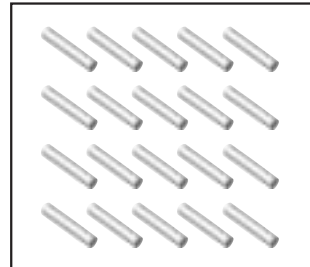
PD1957 CLEAR LEXON BODY W/D,S3



PD1968 BALL BEARING, d5xD10xW4



PD1969 BALL BEARING, d10xD19xW5



PD1970 DOWEL PIN SET

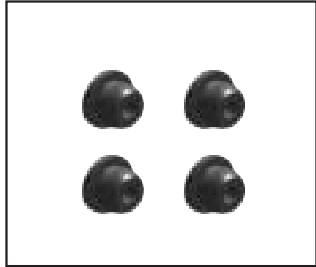


PD1974 CROSS WRENCH & FUEL PIPE



PD1975 HEX WRENCH SET,S3

EB-4 S3 KIT PARTS LIST



PD1976 SHOCK PLASTIC BUSHING, 1/8



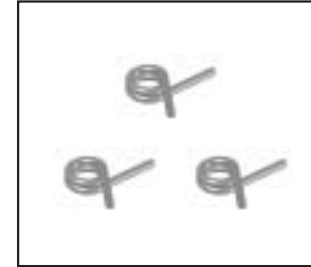
PD1977 BRAKE PAD FIXING SCREW



PD1978 RR TURNBUCKLE, S3



PD1979 BODY DECAL, S3



PD1980 CLUTCH SPRING (3), 21



PD1983 ANTENNA BAG, 1/8



PD1984 WINDOW MASK, S3



PD1985 TT LOGO DECAL, S3



PD1986 FRONT BUMP LOGO, S3



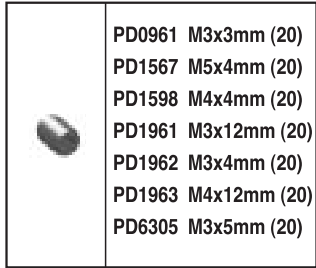
PD0662 BALL BEARING (10), d8xD16xW5



BT MACHINE SCREW

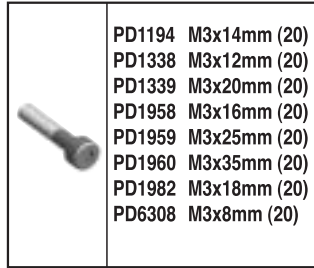


CT MACHINE SCREW



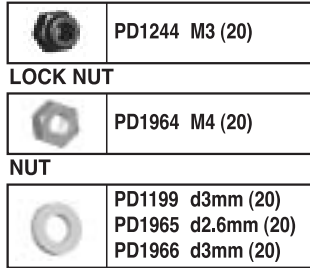
SET SCREW

- PD0961 M3x3mm (20)
- PD1567 M5x4mm (20)
- PD1598 M4x4mm (20)
- PD1961 M3x12mm (20)
- PD1962 M3x4mm (20)
- PD1963 M4x12mm (20)
- PD6305 M3x5mm (20)



SOCKET HEAD MACHINE SCREW

- PD1194 M3x14mm (20)
- PD1338 M3x12mm (20)
- PD1339 M3x20mm (20)
- PD1958 M3x16mm (20)
- PD1959 M3x25mm (20)
- PD1960 M3x35mm (20)
- PD1982 M3x18mm (20)
- PD6308 M3x8mm (20)



LOCK NUT

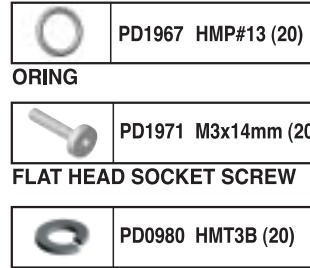
- PD1244 M3 (20)

NUT

- PD1964 M4 (20)

WASHER

- PD1199 d3mm (20)
- PD1965 d2.6mm (20)
- PD1966 d3mm (20)



ORING

- PD1967 HMP#13 (20)

FLAT HEAD SOCKET SCREW

- PD1971 M3x14mm (20)

SPRING WASHER

- PD0980 HMT3B (20)



EB-4 S3 KIT SPARE PARTS LIST

NOV 2004

PART#	DESCRIPTION	NOTE
9279W	AIR FILTER, 1/8, WHITE	
PD0459	BALL BEARING (10), SEALED 5x10x5mm	
PD0662	BALL BEARING (10), SEALED 8x16x5mm	
PD0667	BT MACHINE SCREW, M3x8Bmm	
PD0668	BT MACHINE SCREW, M3x10mm	
PD0669	BT MACHINE SCREW, M3x12mm	
PD0671	BT MACHINE SCREW, M3x16mm	
PD0673	BT MACHINE SCREW, M3x20mm	
PD0674	BT MACHINE SCREW, M3x22mm	
PD0675	BT MACHINE SCREW, M3x25mm	
PD0677	CT MACHINE SCREW, M3x8mm	
PD0678	CT MACHINE SCREW, M3x10Bmm	
PD0679	CT MACHINE SCREW, M3x12mm	
PD0680	CT MACHINE SCREW, M3x14mm	
PD0681	CT MACHINE SCREW, M3x16mm	
PD0682	CT MACHINE SCREW, M3x18mm	
PD0683	CT MACHINE SCREW, M3x20mm	
PD0961	SET SCREW, M3x3mm	
PD0980	SPRING WASHER(20)	
PD1036	BT MACHINE SCREW, M3x8mm	
PD1194	SOCKET HEAD MACHINE SCREW, M3x14mm	
PD1199	WASHER, 3B	
PD1242	CLUTCH BELL 26mm,13T, 1/8	
PD1244	LOCK NUT, M3	
PD1338	SOCKET HEAD MACHINE SCREW, M3x12mm	
PD1339	SOCKET HEAD MACHINE SCREW, M3x20mm	
PD1567	SET SCREW, M5x4mm	
PD1598	SET SCREW, M4x4mm	
PD1869	CLUTCH HARDWARE,21	
PD1870	FLYWHEEL SET	
PD1871	TRANS CASE/BULKHEAD SET,S3	
PD1872	CTR CVA FR/RR,S3	
PD1873	RR BALL UNIVERSAL(2),S3	
PD1874	FR BALL UNIVERSAL(2),S3	
PD1875	UNIV. REBUILD KIT,S3	
PD1876	CLUTCH SHOE (3),21	
PD1877	FR SHOCK SET(2) ,S3	
PD1878	RR SHOCK SET(2) ,S3	
PD1879	SHOCK PSITON(4),S3	
PD1880	SHOCK DIAPHRAGM(10),S3	

PART#	DESCRIPTION	NOTE
PD1881	O-RINGS & SPACER,S3	
PD1882	FR SHOCK BODY(2),S3	
PD1883	RR SHOCK BODY(2),S3	
PD1884	FR SHOCK CAP(2),S3	
PD1885	FR SHOCK SHAFT(2),S3	
PD1886	FR SHOCK SHAFT(2),S3	
PD1887	FR SHOCK BOOT(4),S3	
PD1888	RR SHOCK BOOT(4),S3	
PD1889	FR/RR SHOCK SPRING(2), 1.5mm(4.3lb/3.2lb)S3	
PD1890	SHOCK PLASTIC PARTS,S3	
PD1891	FR/RR SHOCK STANDOFF,S3	
PD1892	FR/RR SHOCK SET PIN,S3	
PD1893	STEEL MAIN GEAR,46T/S3	
PD1894	DIFF BEVEL GEAR SET,S3	
PD1895	DIFF INNER GEAR&PARTS,S3	
PD1896	DIFF SHIME(10),0.2mm,S3	
PD1897	DIFF CASE,S3	
PD1898	DIFF OUTDRIVE(2) FR&RR,S3	
PD1899	DIFF OUTDRIVE(2),CTR,S3	
PD1900	MUFFLER MNT. WIRE,S3	
PD1901	CHASSIS,S3	
PD1902	CHASSIS GUARD,S3	
PD1903-W	REAR WING, WHITE, 1/8	
PD1904	WING ASSEMBLY ,S3	
PD1905	FF SUSP PLATE, S3	
PD1906	SUSP. PLATE SET,S3	
PD1907	SUSP. PLATE JOINT,S3	
PD1908	UP SUSP. ARM PLATE,S3	
PD1909	UP SUSP. ARM HOLDER,S3	
PD1910	FR SWAY BAR M&H, 2.7mmS3	
PD1911	RR SWAY BAR M&H,S3	
PD1912	PIVOT BALL,S3	
PD1913	SUSP. HINGE PIN SET,S3	
PD1914	RR LOWER HINGE PIN,S3	
PD1915	KNUCKLE ,S3	
PD1916	ADJ. BALL (4),S3	
PD1917	ADJ. SCREW (4),S3	
PD1918	ST.PIVOT BALL,S3	
PD1919	ST.TURNBUCKLE,S3	
PD1920	ST.TIE END,S3	

PART#	DESCRIPTION	NOTE
PD1921	RR TIE END,S3	
PD1922	RR.PIVOT BALL,S3	
PD1923	REAR HUB SET,S3	
PD1924	HEX WHEEL ADAPTER SET,S3	
PD1925	SERVO SAVER PL. PARTS,S3	
PD1926	SERVO SAVER ML. PARTS,S3	
PD1927	STEERING SLIDER,S3	
PD1928	SERVO SAVER BUSHING,S3	
PD1929	SERVO SAVER TOP PLATE,S3	
PD1930	CONE WASHER,d4mm,S3	
PD1931	FR BUMPER, S3	
PD1932	CARBON SERVO TRAY,S3	
PD1933	FR SHOCK TOWER,S3	
PD1934	RR SHOCK TOWER,S3	
PD1935	FF/RR BODY MOUNTS&POSTS	
PD1936	ENGINE MOUNT,S3	
PD1937	ENGINE MOUNT SPACER,S3	
PD1938	ENGINE MOUNT WASHER,S3	
PD1939	THRO./ BRAKE LINKAGE,S3	
PD1940	CTR DIFF TOP PLATE, S3	
PD1941	CTR DIFF BRACE, S3	
PD1942	CTR DIFF PL. ASSY.,S3	
PD1943	BRAKE CAM & HARDWARE,S3	
PD1944	BRAKE PADS & SCREWS,S3	
PD1945	BRAKE DISCS,S3	
PD1946	WHEELS (2),S3	
PD1947	RECEIVER BOX,S3	
PD1948	R CLIPS(4),L,S3	
PD1949	R CLIPS(4),S,S3	
PD1950	SERVO MOUNT ACC,S3	
PD1951	ALUM SERVO TRAY POST,S3	
PD1952	SERVO HORN, TH&BK/S3	
PD1953	FUEL TANK & POST, S3	
PD1954	UPR SUSPN ARM SET(2),S3	
PD1955	LWR SUSPN ARM SET(2), S3	
PD1956	REAR SUSPN ARM SET(2), S3	
PD1957	CLEAR LEXON BODY W/D, S3	
PD1958	SOCKET HEAD MACHINE SCREW, M3x16mm	
PD1959	SOCKET HEAD MACHINE SCREW, M3x25mm	
PD1960	SOCKET HEAD MACHINE SCREW, M3x35mm	



EB-4 S3 KIT PARTS LIST

NOV 2004

PART#	DESCRIPTION	NOTE
PD1961	SET SCREW, M3x12mm	
PD1962	SET SCREW, M3x4mm	
PD1963	SET SCREW, M4x12mm	
PD1964	NUT,M4	
PD1965	WASHER,d2.6mm	
PD1966	WASHER,d3mm	
PD1967	ORING	
PD1968	BALL BEARING, d5xD10xW4	
PD1969	BALL BEARING, d10xD19xW5	
PD1970	DOWEL PIN SET,	
PD1971	FLAT HEAD SOCKET SCREW	
PD1972	BT MACHINE SCREW, M3x30mm	
PD1973	CT MACHINE SCREW, M4x12mm	
PD1974	CROSS WRENCH & FUEL PIPE	
PD1975	HEX WRENCH SET,S3	
PD1976	SHOCK PLASTIC BUSHING,S3	
PD1977	BRAKE PAD FIXING SCREW	
PD1978	RR TURNBUCKLE,S3	
PD1979	BODY DECAL, S3	
PD1980	CLUTCH SPRING (3),21	
PD1982	SOCKET HEAD MACHINE SCREW, M3x18mm	
PD1983	ANTENNA BAG, 1/8	
PD1984	WINDOW MASK, S3	
PD1985	TT LOGO DECAL, S3	
PD1986	FRONT BUMP LOGO, S3	
PD6305	SET SCREW, M3x5mm	
PD6308	SOCKET HEAD MACHINE SCREW, M3x8mm	
PD6310	CT MACHINE SCREW, M4x10mm	

OPTIONAL PARTS LIST

PART#	DESCRIPTION	NOTE
9279G	AIR FILTER, 1/8, GREEN	
9279P	AIR FILTER, 1/8, PINK	
9279B	AIR FILTER, 1/8, BLACK	
AD2523-R	ANODIZED WASHER, OPT	
PD0470	CLUTCH BELL 26mm,15T, 1/8	
PD0590	TIRE W/FOAM CUBIC, 1/8	
PD0619	CLUTCH BELL 26mm,14T, 1/8	
PD0680	CT MACH. SCREW,M3x14	
PD1796	MUFFLER, (L)	
PD1797	MUFFLER, (S)	
PD1798	MANIFOLD	
PD1840	A7075 FR SHOCK TOWER,S3 OPT	
PD1841	A7075 RR SHOCK TOWER,S3 OPT	
PD1842-R	CARBON SERVO TRAY,(R),S3 OPT	
PD1842-S	CARBON SERVO TRAY,(S),S3 OPT	
PD1843-R	CARBON SERVO SAVER TOP PLATE (R) OPT	
PD1843-S	CARBON SERVO SAVER TOP PLATE (S) OPT	
PD1844-R	CARBON CTR DIFF TOP PLATE (R), S3 OPT	
PD1844-S	CARBON CTR DIFF TOP PLATE (S), S3 OPT	
PD1845	CTR DIFF MOUNT, S3 OPT	
PD1846	CTR DIFF BRACE, S3 OPT	
PD1847	ALUM FR PLATE FR TRANS, FF-1, S3 OPT	
PD1848	ALUM FR PLATE FR TRANS, FF0, S3 OPT	
PD1849	ALUM FR PLATE FR TRANS, FF+1, S3 OPT	
PD1850	A7075 RR PLATE FR TRANS, FR0, S3 OPT	
PD1851	A7075 FR PLATE RR TRANS, RF0, S3 OPT	
PD1852	A7075 FR PLATE RR TRANS, RF+4, S3 OPT	
PD1853	A7075 RR PLATE RR TRANS, RR+2, S3 OPT	
PD1854	A7075 RR PLATE RR TRANS, RR+3, S3 OPT	
PD1855	A7075 UPPER ARM PLATE, S3 OPT	
PD1856	UPPER ARM HOLDER, S3 OPT	
PD1857	ALUM SERVO SAVER SET, S3 OPT	
PD1858	A7075 LITE ST SLIDER W/BB, S3	
PD1859	LITE ENGINE MOUNT, S3	
PD1860	HARD SWAY BAR BALL, S3	
PD1861	HEATSINK DISC BRAKE, S3 OPT	
PD1862	WING POST, S3 OPT	
PD1863	LITE PIVOT BALL, S3 OPT	

PART#	DESCRIPTION	NOTE
PD1864	LITE HEX WHL ADAPTER, S3 OPT	
PD1865	LITE SELF-LOCK WHL HEX NUT, S3 OPT	
PD1866	SWAY BAR, GOLD 3mm, S3 OPT	
PD1867	SWAY BAR, SILVER 2.5mm, S3 OPT	
PD1903-W	REAR WING, WHITE, 1/8	
PD1903-Y	REAR WING, YELLOW, 1/8	
PD1903-B	REAR WING, BLACK, 1/8	
PD1903-G	REAR WING, GREEN, 1/8	
PD1903-P	REAR WING, PINK, 1/8	
PD1946-W	5-SPOKE WHL, 17mm WHITE, 1/8	
PD1946-Y	5-SPOKE WHL, 17mm YELLOW, 1/8	
PD1946-B	5-SPOKE WHL, 17mm BLACK, 1/8	
PD1946-G	5-SPOKE WHL, 17mm GREEN, 1/8	
PD1946-P	5-SPOKE WHL, 17mm PINK, 1/8	
PD1981-W	MULTI-SPOKE WHL, WHITE, 1/8	
PD1981-Y	MULTI-SPOKE WHL, YELLOW, 1/8	
PD1981-B	MULTI-SPOKE WHL, BLACK, 1/8	
PD1981-G	MULTI-SPOKE WHL, GREEN, 1/8	
PD1981-P	MULTI-SPOKE WHL, PINK, 1/8	
PD1994	ALUM SHOCK SPRING RETAINER, S3 OPT	
PD1995	ALUM SHOCK BOTTOM, S3	
PD1996	FR SHOCK SPRING SET, 1.4mm(BLUE3.2lb)1.6mm(BLACK5.2lb), S3	
PD1997	RR SHOCK SPRING SET, 1.4mm(BLUE2.7lb)1.6mm(BLACK4.5lb), S3	
PD1998	STEEL MAIN GEAR, 48T, S3	
PD2240	ALUM TURNBUCKLE WRENCH, 3.2mm (1/8")	

EB-4 S3 KIT OPTIONAL PARTS LIST



9279G AIR FILTER, 1/8, GREEN
9279P AIR FILTER, 1/8, PINK
9279B AIR FILTER, 1/8, BLACK



AD2523-R ANODIZED WASHER, OPT



PD0470 CLUTCH BELL 26mm,15T, 1/8
PD0619 CLUTCH BELL 26mm,14T, 1/8



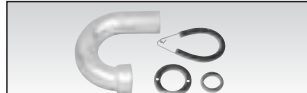
PD0590 TIRE W/FOAM CUBIC, 1/8



PD0680 CT MACH. SCREW,M3x14
For AD2523-R



PD1796 MUFFLER, (L)
PD1797 MUFFLER, (S)



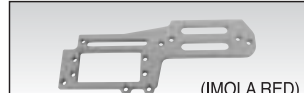
PD1798 MANIFOLD



PD1840 A7075 FR SHOCK TOWER,S3 OPT



PD1841 A7075 RR SHOCK TOWER,S3 OPT



PD1842-R CARBON SERVO TRAY,(R),S3 OPT
(IMOLA RED)



PD1842-S CARBON SERVO TRAY(S),S3 OPT
(DIAMOND SILVER)



PD1843-R CARBON SERVO SAVER TOP PLATE(R) OPT
(IMOLA RED)



PD1843-S CARBON SERVO SAVER TOP PLATE (S) OPT
(DIAMOND SILVER)



PD1844-R CARBON CTR DIFF TOP PLATE (R), S3 OPT
(IMOLA RED)



PD1844-S CARBON CTR DIFF TOP PLATE (S), S3 OPT
(DIAMOND SILVER)



PD1845 CTR DIFF MOUNT, S3 OPT



PD1846 CTR DIFF BRACE,S3 OPT



PD1847 ALUM FR PLATE FR TRANS, FF-1, S3 OPT



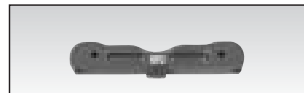
PD1848 ALUM FR PLATE FR TRANS, FF0, S3 OPT



PD1849 ALUM FR PLATE FR TRANS, FF+1, S3 OPT



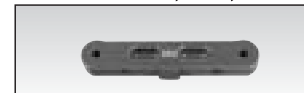
PD1850 A7075 RR PLATE FR TRANS, FR0, S3 OPT



PD1851 A7075 FR PLATE RR TRANS, RF0, S3 OPT



PD1852 A7075 FR PLATE RR TRANS, RF+4, S3 OPT



PD1853 A7075 RR PLATE RR TRANS, RR+2, S3 OPT



PD1854 A7075 RR PLATE RR TRANS, RR+3, S3 OPT



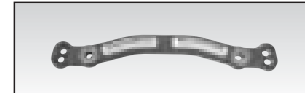
PD1855 A7075 UPPER ARM PLATE, S3 OPT



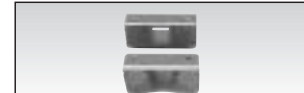
PD1856 UPPER ARM HOLDER, S3 OPT



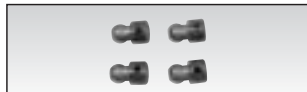
PD1857 ALUM SERVO SAVER SET, S3 OPT



PD1858 A7075 LITE ST SLIDER W/BB, S3



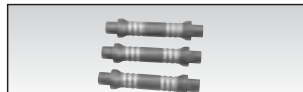
PD1859 LITE ENGINE MOUNT, S3 OPT



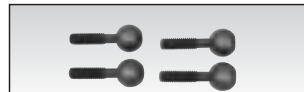
PD1860 HARD SWAY BAR BALL, S3



PD1861 HEATSINK DISC BRAKE, S3 OPT



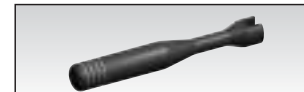
PD1862 WING POST, S3 OPT



PD1863 LITE PIVOT BALL, S3 OPT



PD1864 LITE HEX WHL ADAPTER, S3 OPT



PD2240 ALUM TURNBUCKLE WRENCH, 3.2mm (1/8")



PD1866 SWAY BAR,GOLD 3mm, S3



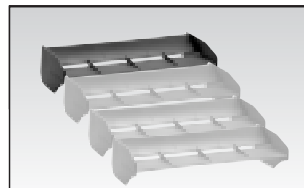
PD1867 SWAY BAR, SILVER 2.5mm, S3



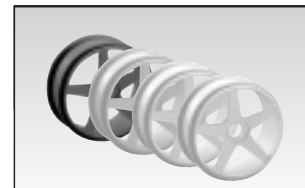
PD1995 ALUM SHOCK BOTTOM, S3



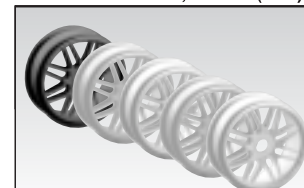
PD1994 ALUM SHOCK SPRING RETAINER, S3 OPT



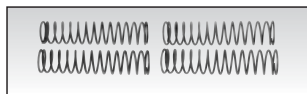
PD1903-Y REAR WING, YELLOW, 1/8
PD1903-B REAR WING, BLACK, 1/8
PD1903-G REAR WING, GREEN, 1/8
PD1903-P REAR WING, PINK, 1/8



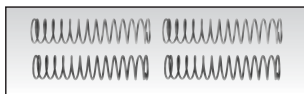
PD1946-Y 5-SPOKE WHL, 17mm YELLOW, 1/8
PD1946-B 5-SPOKE WHL, 17mm BLACK, 1/8
PD1946-G 5-SPOKE WHL, 17mm GREEN, 1/8
PD1946-P 5-SPOKE WHL, 17mm PINK, 1/8



PD1981-W MULTI-SPOKE WHL, WHITE, 1/8
PD1981-Y MULTI-SPOKE WHL, YELLOW, 1/8
PD1981-B MULTI-SPOKE WHL, BLACK, 1/8
PD1981-G MULTI-SPOKE WHL, GREEN, 1/8
PD1981-P MULTI-SPOKE WHL, PINK, 1/8



PD1996 FR SHOCK SPRING SET, 1.4mm(BLUE3.2lb), 1.6mm(BLACK5.2lb), S3

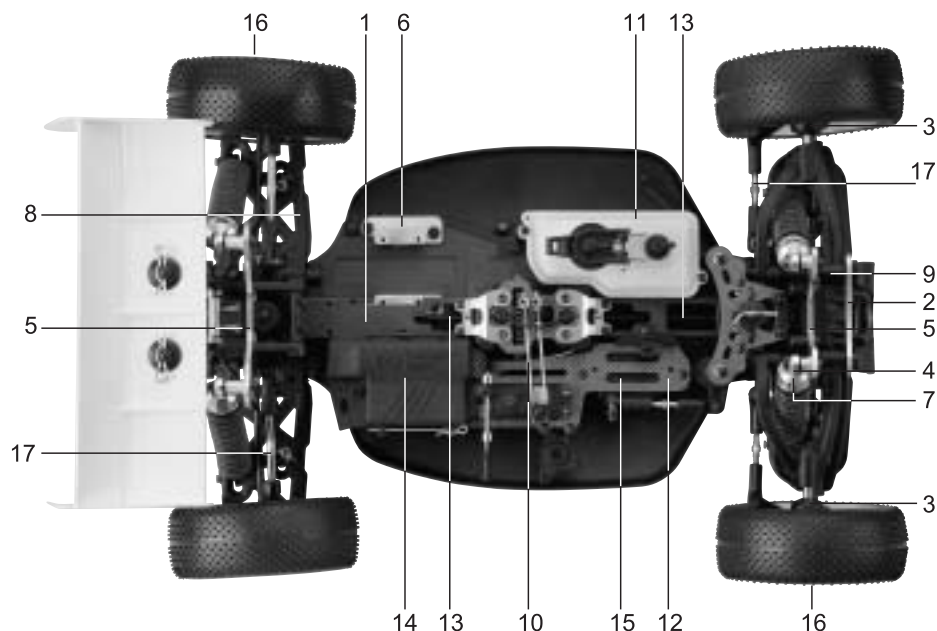


PD1997 RR SHOCK SPRING SET, 1.4mm(BLUE2.7lb), 1.6mm(BLACK4.5lb), S3



PD1998 STEEL MAIN GEAR, 48T, S3

1/8 Nitro Powered 4WD Racing Buggy



- 1) Unique Delta-Box machined hardened chassis provides more rigidity than a conventional stamped chassis.
- 2) Patent captured hinge pins no E CLIPS needed, also prevents bound up suspension components.
- 3) Front A-arm with adjustable Pivot-Ball Suspension
- 4) A7075-T6 Shock absorber cap provides longer reliability.
- 5) A7075-T6 Front/Rear shock towers
- 6) A7075-T6 Engine deck for easy installation.
- 7) AB (Anti-Bumping) shocks with 3.5mm shafts provide various damping and rebounding.
- 8) Ultra long, light weight suspension arms
- 9) Small transmission bulkheads with gasket
- 10) CNC machined dual composite heavy duty and ultra light brake disc offers stable braking power with its anti-oil (water) formula.
- 11) Dual fuel pick up.
- 12) Graphite front brace, radio tray and center diff top plate.
- 13) Heavy duty CVD universal drive trains(Front/Center/Rear)
- 14) Enclosed radio box protects receiver and batteries from any foreign elements.
- 15) Laid down steering servo for low center of gravity
- 16) Complete set of rubber-sealed ball bearings included.
- 17) Fully adjustable Toe, Caster and Ackerman.

Specification

Length: 496mm/19.5in
 Width: 305mm/12in
 Height: 180mm/7.08 in
 Weight: 3340g/7.4lb approx.
 Wheelbase: Adjustable from 320mm to 330mm
 Front track Width: Adjustable from 295mm to 305mm
 Rear track Width: 300 mm
 Front Caster: Adjustable from 16 to 25
 Front Anti-Dive: -1 0 +1 (Front kick up: 7)
 Rear Anti-Squat: 0 +2 +3 +4
 Front Toe: 0 with adjustable Turnbuckle.
 Rear Toe-in: 1 +1.5 +2 +3

Gearing

Pinion/Spur: 13:46
 Primary: 3.54:1
 Internal: 3.31:1
 Final: 11.72:1

ACCESSORIES RECOMMENDED

Super Torque Digital Servo



Glow Starters

No.2150 1.8AH Long Glow Starter w/110V 2P
 No.2151 1.8AH Long Glow Starter w/230V 2P
 No.2152 1.8AH Long Glow Starter w/230V 3P



No.1261
600cc Fuel Bottle
 No.1266
300cc Fuel Bottle



No.1103
Hex Driver Set



No.1116
5-Way Wrench

Starter box

No.2409

