

**WARNING! THIS VEHICLE USES A LI-PO (Lithium Polymer) BATTERY PACK AND ALL BATTERY WARNINGS AND BATTERY CARE INSTRUCTIONS MUST BE READ BEFORE USE.**

Read these instructions and follow them in regards to safely charging your Li-Po battery pack. The user will take the full responsibility for using and the results of using this battery pack. Trinity Products Inc. your point of purchase and any dealer/distributor of this battery will assume no responsibility for the use or misuse of this product and any damages or injuries that may occur.

Li-Po (Lithium-Polymer) batteries are designed to out perform Ni-Cd and Ni-MH batteries in the areas of weight, voltage and capacity, but greater care must be taken to insure safe use in regards to your vehicle, person and surroundings.

The nature of Li-Po batteries is the capacity and performance gains comes at a cost in the areas of safety and maintenance. Used correctly your Li-Po battery pack will prove to be safe and reliable.

The Li-Po technology requires special chargers and different ways of charging and caring for your battery pack than you have been accustomed to with Ni-Cd and Ni-MH. More care is required with Li-Po especially during charging and storing.

**WARNING!**

Li-Po batteries are unlike Ni-Cd and Ni-MH and cannot be charged, used, treated or stored in the same manner. The nature of the Li-Po battery pack is that the failure to follow the care and handling instructions provided can result in severe permanent damage to the battery pack, its surroundings, your person and it can even start a fire.

**CHARGING:**

• Your Trinity Li-PRO battery pack has both a standard (Tamiya or Traxxas style) plug (large) and a mini balancing plug. The larger plug is used for powering your vehicle. The small plug is used for charging the pack battery.



• Never leave battery pack unattended at any time during charging. You must always charge your battery pack in a fireproof location, which could be a metal container like a pail, pot or bucket of sand. Always keep "ABC" type lithium approved fire extinguisher present.

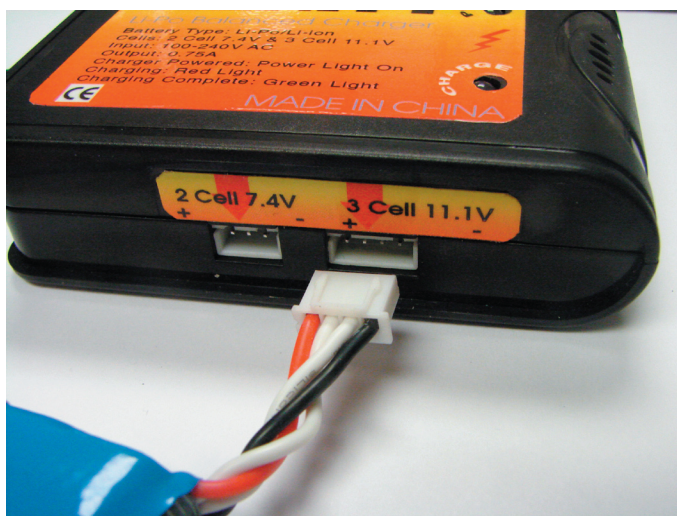
• Charge only with a Li-Po compatible charger that has a constant current/constant voltage (cc/cv) circuit, your enclosed Trinity TRI22004 has these specifications. Never use a charger designed for Ni-Cd/Ni-MH. This will result in catastrophic failure of the battery that can result in serious fire and personal injury. Charging the battery pack with any charger other than the one supplied will void any warranty on the battery packs and can result in a catastrophic failure of the battery and cause damage to the battery, its surroundings, and cause personal injury.

• Never charge battery in your NOW truggy. A hot battery pack could ignite foam, plastic or wood.

• Do not charge at currents greater than the battery packs 1C rating. A higher setting may cause fire. The NOW's 1350mAh pack has a 1C charge rate of 1.3 amps maximum. Your Trinity balanced charger will automatically charge your battery at the correct rate.

• Do not trickle charge your Li-Po batteries. Your Trinity charger has no trickle mode and stops charging when the battery becomes fully charged.

• Always use a Li-Po compatible charger that automatically detects the number of cells. Your NOW Li-Po pack has 3 cells. The balancing plug will only fit in the 3 cell port of your charger.



• Do not allow battery temperature to exceed 140°F /60°C while charging. Batteries, which exceed these temperatures more than likely, have become damaged and can possibly catch fire. Always inspect any battery pack than may have become over heated and if you suspect damage do not reuse.

• Discontinue charging immediately if you see any smoke or swelling of the battery pack. This could cause the battery pack to rupture and leak. The chemicals used in Li-Po battery packs on exposure to the air may cause the chemicals to ignite. Disconnect battery and leave in a safe fireproof location for 60 minutes.

• Your Trinity Reference Li-PRO™ battery pack has a balanced charger input. This is to be used only with a balance charger like the (Trinity TRI22004) charger. This type of charger balances the cells making your battery more stable and higher performing.

• Monitor battery pack through out entire charge cycle. Do not leave unattended.

•The small balance charger plug is used only for balance charging. Do not fast charge through this connection.

### USING & DISCHARGING:

• Make sure you stop running as soon as vehicle slows down. Your Castle Creations speedcontrol is preprogramed for Li-Po battery packs. This mode will turn off battery pack usage when the voltage drops below the usable level. With a Li-Po battery you never want to drain the battery all the way down. As soon as vehicle slows stop running. Unplug battery pack and store it in safe area.

• Do not discharge the batteries with current exceeding their specified maximum continuous discharge current (C), otherwise, it will cause the batteries to overheat and result in battery deterioration, burst, balloon or may even cause fire or explosion.

•Stop using or charging the battery immediately whenever a battery becomes damaged, gives off an odor, becomes discolored or deformed, starts to balloon or swell up, leaks, its temperature reaches over 160°F (71°C) or anything else abnormal occurs, disconnect the battery and observe it in a safe fire proof place.

•Never discharge Li-Po battery below the Lowest Discharge Voltage, as it may cause irreversible damage that will deteriorate the battery performance and cycle life. Stop using battery as soon as vehicle slows.

• Discharge only in fireproof area.

### DAMAGED BATTERIES:

•Because of the nature of Li-Po technology batteries subjected to crash damage are much more dangerous than Ni-Cd or Ni-MH cells. The battery may appear to have no physical damage however there could be a delayed chemical reaction which could cause the battery to smolder, smoke and catch fire even an hour after subjected to a crash. After a crash remove battery and place in fireproof location for observation. Leave for 24 hours for safety.

•Inspect battery packs for even the smallest crack, split, puncture or any damage to wires or connectors.

•Cells may get hot. DO NOT ALLOW the batteries electrolyte to get in eyes or on your skin. Wash affected areas immediately.

If splashed in eyes flush with large amounts of water for 15 minutes and seek medical attention immediately.

### STORAGE:

•For long-term storage charge battery fully and discharge to 50 to 60% capacity.

•Always store batteries in fireproof container. Never in vehicle.

•Store battery at room temperature in cool shaded area.

•Store battery in temperature between 40 to 75°F.

•Store battery out of direct sunlight and away from any liquids. Do not let battery get wet.

•Never transport batteries in your pit box or R/C vehicle. Always transport in fireproof container.

•Make sure all plugs and connectors are covered to prevent accidental shorting.

•Never leave your Li-Po battery pack in your automobile as temperatures can easily exceed 120°F damaging your battery.

### HANDLING:

•Never charge or discharge your Li-Po battery pack around combustible materials.

•Never carry battery pack in pocket of clothing.

•Never store batteries near heat or open flame.

•Never allow battery to come in contact with water. If battery becomes wet wipe off immediately with rag.

•Never solder to battery pack. Soldering to Li-Po cells has to be done by professional Li-Po battery assemblers under controlled conditions.

•Never assemble Li-Po battery with any other Li-Po or other type of battery pack.

•Never disassemble, alter, modify, puncture, mechanical shock, crash and/or short the battery, it may cause leakage, smoke emissions, ignition, explosion and even fire, which may result in personal injury and property damage.

•Never charge without “ABC type” Lithium approved fire extinguisher readily available in case of fire.

•Keep all metallic objects away from battery pack. Shorting battery pack can cause fire and personal injury.

•If battery pack becomes overheated immediately put battery in fireproof container or location until battery pack cools.

•Always make sure there is adequate ventilation around battery pack while charging, discharging and during storage.

•Never store battery in R/C vehicle.

### FIRST AID:

•Do not allow the battery packs electrolyte make contact with eyes or skin. If this happens was affected areas with soap and water immediately. If electrolyte comes in contact with eyes, flush with large amounts of water for approximately 15 minutes and seek medical attention immediately.

•If your battery leaks electrolyte, vapors or smokes do not inhale the leaked material or fumes. Leave the area and allow battery pack to cool and vapors to dissipate. Remove spilled liquid with absorbent material and wash area thoroughly with soap and water.

### DISPOSAL:

•Li-Po batteries are environmentally friendly and do not need to be recycled like Ni-Cd. Although there is no recycling required Li-Po batteries need special care before disposing of them.

•Do not throw batteries directly in trash. There are measures you must take to dispose of damaged and undamaged battery packs. Throwing batteries directly in trash can result in fire.

•Undamaged Li-Po batteries need to be discharged before disposal. Place undamaged battery in fireproof container or bucket of sand. Connect battery to a Li-Po discharger and set cut-off to lowest voltage. Set the discharge current .5 amps and discharge battery pack until it reaches 1V or lower per cell, (2 volts for this battery pack).

You may also run battery in vehicle until there is no more power.

•Put battery in bucket or tub of salt water. This container should have a lid but needs not be air tight. The mixture should be 3 to 5 gallons of cold water with ½ cup of salt mixed in per gallon.. Put battery in container and allow battery to remain for 2 weeks.

•After 2 weeks remove battery and place in trash.

•For batteries that have swelled, split, been punctured or have any other damage do not discharge. Put battery directly in tub of salt water and leave for 2 weeks before disposing of in trash.

Once you have discharged and soaked your battery pack in salt water you can safely dispose of the battery pack in the trash. No special recycling program is required.

**Trinity Products Inc. assumes no liability for the use or misuse of this product. By purchasing this battery the consumer/buyer/user assumes all liability and will take the full responsibility for using and the results of using this battery pack.**

**Trinity Products Inc. your point of purchase and any dealer/distributor of this battery their employees or owners will assume no responsibility for the use or misuse of this product and any damages or injuries to property or person that may occur from its use.**

**If the above terms are not agreed to please return this battery pack to the place of purchase.**

TRINITY PRODUCTS INC  
47 COLONIAL DRIVE  
PISCATAWAY, NJ 08854  
732-562-1234  
www.teamtrinity.com

### TOOLS NEEDED:

Your NOW Truggy comes completely ready to ready to race except for 8 transmitter batteries. We recommend the following tools for keeping your NOW running well.

Hobby knife  
Small scissors  
Wire cutters  
Thread locking compound  
Small ruler or caliper  
Philips screwdrivers  
3 way hex wrench or set of small metric wrenches  
Needle nose pliers  
Metric allen wrenches, 1.5, 2.0, 2.5, 5mm  
CA type glue.

When working on your NOW Truggy never use an electric screwdriver as you risk stripping out the plastic parts.

### WHAT'S NEEDED TO GET STARTED:

8 “AA” batteries for the transmitter.

### SAFETY GUIDELINES

Your NOW tuggy is not intended for use by children without direct supervision of a responsible, knowledgeable adult. Trinity Products Inc. shall not be liable for any loss or damages or injuries, whether direct, indirect, special, incidental, or consequential, arising from the use, misuse, or abuse of this product and/or any product or accessory required to operate this product.

### IMPORTANT POINTS TO REMEMBER

Always, turn on your transmitter first before turning on your vehicle's receiver switch. When turning an R/C vehicle off, the order is just the opposite; turn the receiver switch off first and then turn the transmitter off.

Just remember that when your truck is turned ON, your transmitter should always be turned ON. If not, your NOW Truggy will no longer be under the control of your transmitter, and could unexpectedly take off on its own causing damage to itself and other people.

Never use old, worn out batteries in your transmitter. Use only fresh alkaline batteries or fully charged rechargeable batteries to ensure that you will not exceed the range of your radio system while driving your truck.

Electric motors and batteries get very hot. Take care when handling your vehicle to keep from burning your fingers.

Never leave battery unattended while charging.

Charge in fireproof area.

Never store or transport your Truggy with the battery pack in it.

Always keep battery pack in fireproof container when not using or transporting.

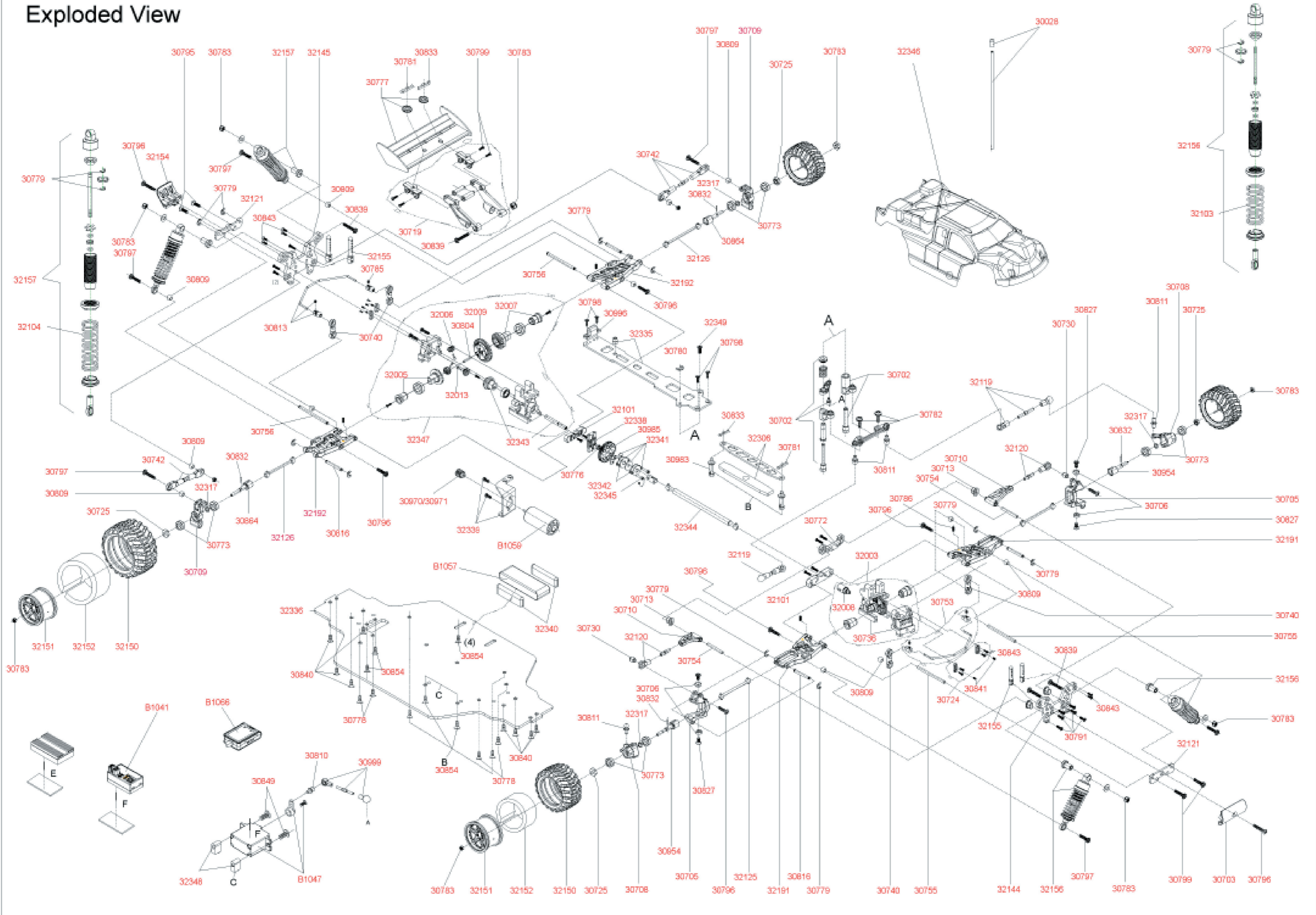
Only run your Truggy in safe, open areas that will not put anything or anyone in danger of a collision. Use common sense when driving your truck to insure that you are not causing a potential hazard to anyone (crowds of people and confined areas should be avoided).

Although the NOW Truggy is small and light-weight, it can still hurt when it runs into you at ankle height. It can also startle someone who is not expecting it, so it is extremely important to ALWAYS keep a safe distance between any people and the path of your truck (don't forget this includes yourself).

Never run your NOW Truggy through puddles, wet grass, snow or any other type of moisture. Also never use any liquid cleaners around the



# Exploded View



electronic components on your NOW Truggy. Any small amount of moisture can cause severe damage to your electronics.

If you will be running with other R/C vehicles, always confirm before turning your transmitter on, that no one else is using your same frequency channel. If necessary, you may change frequencies.

Always let your Motor and battery cool down completely between runs.

Prolonged running on high drag surfaces like grass, can cause excessive heat and cause premature failure of speed controller and transmission gears.

### GETTING STARTED

The first thing you need to do is install the batteries in your transmitter.

8 "AA" batteries go into the bottom of the transmitter. Check the life and proper installation of your batteries by switching the transmitter to on. You should see LED's light up red and green. If you do not, or just the red lights up than your batteries are low on voltage or you may not have installed them all correctly.

As the life of your transmitter batteries begins to decline, the green LED will no longer light. When you notice that you are down to only the red light, this is a caution sign that it is time to install new batteries. If you continue operating your Truggy it may easily travel out of range causing you to lose all control, which could result in a collision causing damage to the vehicle or other property.

### ASSEMBLING THE ANTENNA

Locate the plastic antenna tube (found inside the box). Also locate the black antenna wire coming out the radio box. Thread the antenna wire into the plastic antenna tube until it comes out the other side. Pull the remaining wire through the tube, and then press the tube into the antenna mount in the lid of the radio box. Bend the antenna wire down around the tube and install the black rubber antenna cap on the top of the tube. You may then wrap the remaining wire around the tube.

DO NOT cut the antenna wire off! This could shorten the range of your radio system.

### LEARNING THE TRANSMITTER

Before turning on your Truggy, please familiarize yourself with the controls and adjustments of the radio transmitter. You may use the following diagram to confirm the location and function of each of these features.



A - ON/OFF Switch: Controls power to the transmitter.  
B - Steering Wheel: Steers the vehicle left and right.

- C - Throttle Trigger: Controls the speed and the brakes of the vehicle.
- D - Throttle Trim: Adjusts the neutral position of the throttle so your truck responds correctly to the trigger. The throttle trim may also be used to adjust the amount of brakes your truggy has.
- E - Steering Trim: Adjusts the center position of the steering so your truck travels straight.
- F - Throttle Reverse Switch: Reverses the forward/ reverse direction of your throttle trigger.
- G - Steering Reverse Switch: Reverses the left/right direction of the steering wheel.
- H - Antenna: Transmits radio signals to your receiver.
- J - Battery Power Indicators: Signal when it is time to replace your transmitter batteries.
- K - Steering Dual rate. This controls how far your front wheels turn in relationship to the wheel on the transmitter.

Please familiarize yourself with the function of the steering and throttle controls as shown above.

### RUNNING MULTIPLE TRUGGIES

If you have some buddies that would like to get a NEXT Truggy of their own or already have friends with other RC vehicles that you will be racing with, it is very important that you first check what frequency channel your Truggy is on and confirm that none of your friends have the same frequency as you.

If you do find that someone else is using the same frequency channel that you are, you must either wait for them to turn their transmitter and vehicle OFF or you may choose to change the frequency crystals in your transmitter and receiver (so that you can run together at the same time without causing any radio interference). Additional frequency crystal sets can be purchased separately and installed in a few quick seconds.

To change frequency crystals simply remove the black plastic crystal holder from the back of your transmitter by carefully pulling it straight out. Slide the crystal out of the holder and install the new crystal labeled "T" in its place. Carefully align the two pins that extend from the crystal with the socket in the back of your transmitter, and gently press it into place. DO NOT force the crystal! The pins can easily be broken!

Remove the crystal from your receiver in the same careful manner. The crystal extends from the side of the radio box.

PLEASE NOTE: It is very important that the crystal labeled "T" is installed in the transmitter and the crystal marked "R" is installed in the receiver.

### RUNNING YOUR TRUGGY

After reading all of the above information, you are likely ready to get started.

Make sure your battery is fully charged and connected to your truggy.

Turn on your transmitter, pull up the antenna and turn on the receiver. Your speed control will go through a chiming start up sequence. This is normal. The speed control is programming itself to the radio and will do this at each startup. It is important that radio is always turned on first.

Test the radio to make sure that the throttle and steering work smoothly and in the correct direction. Pulling back on the throttle is power and pushing forward gives you brakes.

If either servo works in the wrong direction simply using the servo reversing switches on the transmitter to change the direction.

### TROUBLE SHOOTING

Your NOW Truggy will be basically trouble proof and just require main-

tance of consumable items like gears, tires and suspension arms to keep it running. The Trinity brushless motor should provide hours and hours of high performance with out needing replacement. The battery pack should if taken care of as per the instructions at the front of the booklet provide you with many hours of safe performance.

### WARRANTY INFORMATION

Your NOW Truggy is considered to be a high performance off-road racing vehicle. As such this vehicle will be used in an extreme range of conditions and situations, all which may cause premature wear or failure of any component.

Trinity has no control over usage of vehicles and charging of the battery once they leave the dealer, therefore Trinity can only offer a warranty against all manufacturer's defects in materials, workmanship, and assembly at point of sale (before use). No warranties are expressed or implied that cover damage caused by what is considered normal use, or cover or imply how long any engine, chassis or electronic component will last before requiring replacement.

Any and all warranty coverage will not cover replacement of any part or component damaged by neglect, abuse or improper or unreasonable use. This includes but is not limited to damage from crashing, improper battery charging, chemical and/or water damage, excessive moisture, improper or no maintenance, or user modifications which compromise the integrity of components.

Warranty will not cover components that are considered consumable on R/C vehicles. Trinity does not pay nor refund shipping on any component sent to Trinity for warranty.

All NEXT car, motor, Battery and transmitter warranty issues are handled directly by Trinity Products Inc. in Piscataway NJ.

All warranty claims must be accompanied by original receipt UPC bar code from the side of the box and a Warranty Authorization number.

This number is obtained by contacting Trinity at the e-mail address listed below.

Trinity reserves the right to make the final determination of the warranty status of any component or part.

Any component sent in for warranty without the proper information will be held for 60 days. The sender will be notified on return shipping charges via e-mail or parcel post within 3 days. After 60 days the parts will be discarded.

You may contact us for warranty or technical support through our e-mail tech support address: [tsupport@teamtrinity.com](mailto:tsupport@teamtrinity.com). All e-mail is usually answered within 24 hours.

All Castle Creations Speed Control warranty problems will be handled by Castle Creations directly. 235 South Kansas Ave. Olathe, KS. 66061 913.390.6939, fax 913.390.6164

### Limitations of Liability

Trinity Products Inc. makes no other warranties expressed or implied. Trinity shall not be held liable for any damages resulting in the use of this product or any accessories and/or components required to use this product.

In the act of purchasing, using or operating this vehicle, the user accepts all resulting liability. In no case shall Trinity's liability exceed the purchase price of the vehicle.

Due to the high performance level of this vehicle you will need to periodically maintain and replace consumable components such as tires, gears, body and eventually motor and battery to maintain the same performance level as when new.

### NEXT PARTS LIST

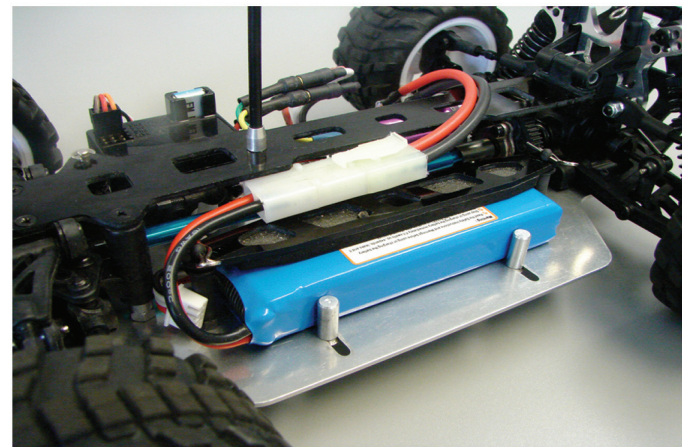
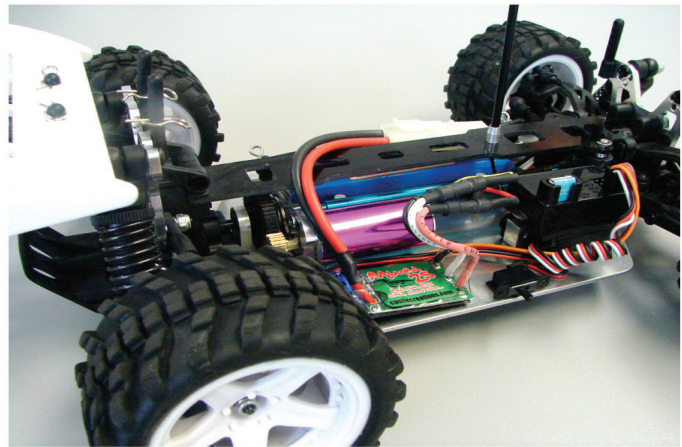
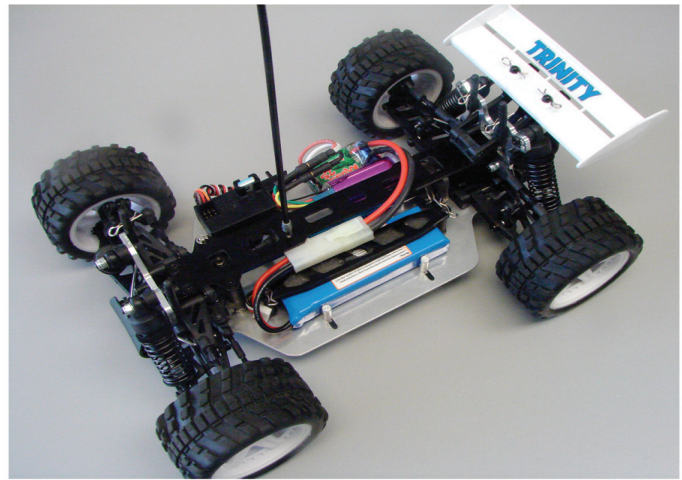
TRI30702	Servo Saver Complete	\$4.99
TRI30703	Front Bumper	\$1.29
TRI30705	Front Uprights (L&R)	\$1.79
TRI30706	Nuckle Arm Spacer W/Screws (4)	\$0.99
TRI30708	Front Knuckle Arms (L&R)	\$1.79
TRI30709	Rear Hub Carrier (L&R)	\$1.79
TRI30710	Front Upper Arms (L&R)	\$1.99
TRI30713	Front Upper Arm Spacers (4)	\$0.99
TRI30719	Rear Wing Mount	\$2.99
TRI30724	Sway Bar Back Plate W/Screws	\$1.79
TRI30725	Wheel Hubs (4)	\$0.99
TRI30728	Antenna Tube & Cap Set	\$1.29
TRI30730	Front Suspension Arm Balls (2)	\$0.79
TRI30736	Gear Box Housing	\$3.99
TRI30740	Sway Bar Tie Rods (4)	\$0.99
TRI30742	Rear Upper Arms (2)	\$1.79
TRI30753	Front Sway Bar Set	\$2.99
TRI30754	Pin For Front Suspension Top (2)	\$1.29
TRI30755	Pin For Lower Suspension (2)	\$1.29
TRI30756	Pin For Rear Suspension (2)	\$1.99
TRI30772	Front Upper Suspension Arm Bracket 1 Pc.	\$0.99
TRI30773	Ball Bearing 4 x 8 x 3mm (8)	\$19.99
TRI30776	Ball Bearing 4 x 7 x 2.5mm (4)	\$9.99
TRI30777	Rear Wing With Spacer	\$1.99
TRI30778	2.5 x 6mm Flat Head Screw (10)	\$0.99
TRI30779	2.3 x .4mm E Clips (10)	\$0.99
TRI30780	3 x .04mm E Clips (10)	\$0.99
TRI30781	Clip A (10)	\$1.99
TRI30782	Steering Rack With Screws	\$1.59
TRI30783	3mm Lock Nut (10)	\$0.99
TRI30785	3 x 3mm Set Screw (10)	\$3.49
TRI30786	3 x 10mm Set Screw (10)	\$3.49
TRI30791	2.6 x 8mm Flat Head Screws (10)	\$0.99
TRI30795	2.6 x 16mm Flat Head Screw (10)	\$0.99
TRI30796	3 x 12mm Button Head Screw (10)	\$0.99
TRI30797	3 x 10mm Button Head Screw (10)	\$0.99
TRI30798	2.6 x 10mm Flat Head Screw (10)	\$0.99
TRI30799	2.6 x 12mm Button Head Scr (10)	\$0.99
TRI30804	2 x 18mm Pin (10)	\$2.49
TRI30809	5.8mm Balls (10)	\$2.99
TRI30810	2 x 4mm Ball Stud (10)	\$4.99
TRI30811	3 x 4.7mm Ball Stud (10)	\$4.99
TRI30813	Rear Sway Bar Set	\$2.99
TRI30816	Upright Pins (4)	\$1.99
TRI30827	3 x7 mm Flat Head Screws (10)	\$0.99
TRI30832	1.5 x 7mm Pin (10)	\$2.50
TRI30833	Body Clip D (10)	\$1.99
TRI30839	3 x 17mm Button Head Screw (10)	\$1.29
TRI30840	TPF 2 x 8mm Screw (10)	\$1.29
TRI30841	3 x 5mm Set Screw (10)	\$3.99
TRI30843	2 x 6mm Flat Head Screws	\$0.99
TRI30849	3 x 6mm Screw (10)	\$1.29
TRI30854	2.6 x 6 Flat Head Screw (10)	\$0.99
TRI30970	Metal Pinion Gear 17T 2 Pcs.	\$5.99
TRI30971	Metal Pinion Gear 15 Tooth. 2 Pcs.	\$5.99
TRI30983	Battery Posts 2 Pcs.	\$0.99
TRI30985	Spur Gear	\$2.99
TRI30996	Rear Wing Bracket	\$0.99
TRI30999	Servo Tie Rod Set	\$0.79
TRI32003	Front Diff Complete With Metal Gears	\$35.00
TRI32005	Metal Diff Ring Gear Shaft/Outdrive	\$5.99
TRI32006	Metal Diff Small Bevel Gear 3 Pcs.	\$6.99
TRI32007	Metal Diff Large Bevel Gear With Outdrive	\$5.99



TRI32009	Metal Diff Ring Gear 1 Pc.	\$4.99
TRI32013	Shaft For Metal Diff Pinion Gear 6 Pcs.	\$6.99
TRI32101	Suspension Arm Bracket	\$0.99
TRI32103	Front Shock Spring Black (2)	\$1.99
TRI32104	Rear Shock Spring Black (2)	\$1.99
TRI32119	Steering Turnbuckle Set (2)	\$1.99
TRI32120	Front Upper Arm Rod (2)	\$1.59
TRI32121	Lower Arm Bracket	\$1.59
TRI32125	Front Dog Bones (2)	\$5.99
TRI32126	Rear Dog Bones (2)	\$5.99
TRI32144	Front Shock Tower	\$8.99
TRI32145	Rear Shock Tower	\$10.99
TRI32150	Wheels 2 Pcs.	\$5.99
TRI32151	Tires (2)	\$9.99
TRI32152	Inserts 2 pcs.	\$1.99
TRI32154	Rear Bumper	\$1.99
TRI32155	Body Mounts 4 pcs.	\$1.59
TRI32156	Front Shocks Plastic (2)	\$5.99
TRI32157	Rear Shocks Plastic (2)	\$5.99
TRI32172	Clear Body	\$15.99
TRI32191	Front Lower Suspension Arms L/R	\$3.99
TRI32192	Rear Lower Suspension Arms L/R	\$3.99
TRI32306	Fiberglass Battery Clip	\$3.99
TRI32317	Crush Sleeves	\$2.79
TRI32335	Fiberglass Upper Plate	\$11.99
TRI32336	Aluminum Chassis Plate	\$24.99
TRI32337	Instruction Manual	\$2.99
TRI32338	Spur Gear Bracket	\$3.99
TRI32339	Motor Mount	\$17.99
TRI32340	Battery Block 1 Set	\$3.99
TRI32341	Slipper	\$3.99
TRI32342	Slipper Pad	\$1.99
TRI32343	Metal Drive Gear With Shaft	\$3.59
TRI32344	Drive Shaft	\$3.59
TRI32345	Slipper Hex Screws, 2.5 x 10mm 10 Pcs.	\$1.99
TRI32346	NOW Painted Body	\$24.99
TRI32347	Rear Diff Box Complete	\$29.99
TRI32348	Servo Mounts	\$1.59
TRI32349	FH Screws ISO 2.5 x 6mm 10 Pcs.	\$1.99
TRI20226	3 Cell 1350mAh Lipo Battery Pack, 11.1V	\$59.99
TRI22004	Balanced Battery Charger	\$49.99
TRIB1059	Brushless Motor	\$60.00
TRIB1041	27MHz FM Receiver	\$24.99
TRIB1047	Steering Servo With Servo Horn	\$29.99

**OPTION PARTS**

TRI32106	Rear Aluminum Shocks	\$17.99
TRI30902	Servo Saver Set Aluminum	\$29.99
TRI30904	Front Bulkhead Aluminum	\$8.99
TRI30905	Front Uprights L & R Aluminum	\$29.99
TRI30908	Front Knuckle Arms L & R Alum.	\$15.99
TRI30909	Rear Hub Carrier L & R Aluminum	\$16.99
TRI30910	Front Upper Suspension Arm Set	\$15.99
TRI30915	Blue Front Sway Bar Set	\$2.50
TRI30916	Blue Rear Sway Bar	\$2.50
TRI30918	Sway Bar Back Plate Aluminum	\$4.99
TRI30920	Bumper Aluminum	\$2.99
TRI32127	Front CVD (2)	\$29.99
TRI32128	Rear CVD (2)	\$29.99
TRI32105	Front Aluminum Shocks (2)	\$17.99



**Trinity Products Inc. assumes no liability for the use or misuse of this product. By purchasing this battery the consumer/buyer/user assumes all liability and will take the full responsibility for using and the results of using this battery pack.**

**Trinity Products Inc. your point of purchase and any dealer/distributor of this battery their employees or owners will assume no responsibility for the use or misuse of this product and any damages or injuries to property or person that may occur from its use.**

**If the above terms are not agreed to please return this battery pack to the place of purchase.**

TRINITY PRODUCTS INC  
47 COLONIAL DRIVE  
PISCATAWAY, NJ 08854  
732-562-1234  
www.teamtrinity.com  
www.teamtrinity.com

